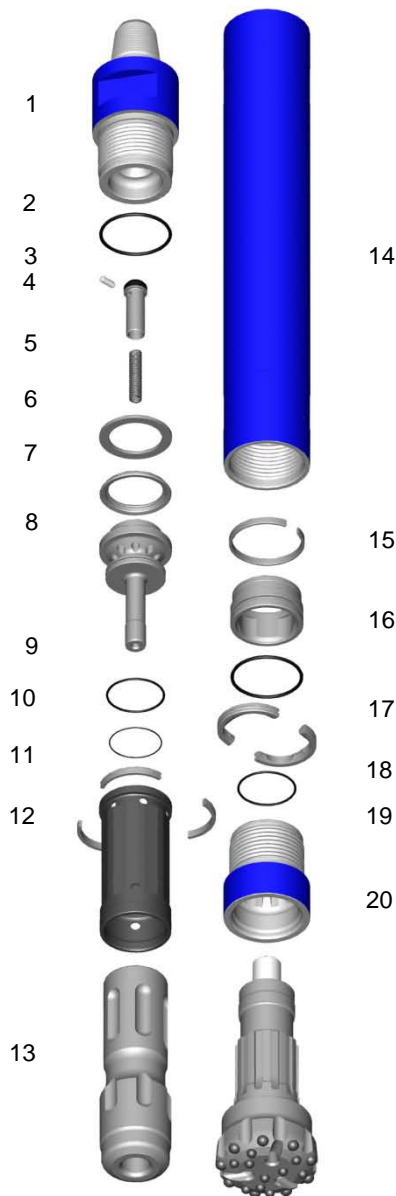




4. Appendix

4.1 DTH Hammer exploded view and Parts List and Technical Data



| Item | Description | Part Number |
|------|----------------------------------|-------------|
| | Mincon 6DH – 3 1/2" API Reg. Pin | MD601AS10 |
| 1 | Backhead (3 1/2" API Reg. Pin) | MD601BH01 |
| 2 | O Ring | MD622OR01 |
| 3 | Choke Blank | MB506CH01 |
| | Choke 1/8" (3.2mm) | MB506CH02 |
| | Choke 3/16" (4.8mm) | MB506CH03 |
| 4 | Check Valve | MB502CV01 |
| 5 | Spring | MB503SP01 |
| 6 | Steel Make Up Ring | MD604SM01 |
| 7 | Lock Ring | MD605LR01 |
| 8 | Air Distributor | MD607DR01 |
| 9 | O Ring | MD621OR01 |
| 10 | O Ring | MD622OR01 |
| 11 | Seating Ring | MD609SR01 |
| 12 | Inner Cylinder | MD608IC01 |
| 13 | Piston | MD610PN01 |
| 14 | Wear Sleeve | MD611WS01 |
| 15 | Piston Retaining Ring | MD612PR01 |
| 16 | Aligner | MB613BB01 |
| 17 | O Ring | MD621OR01 |
| 18 | Bit Retaining Ring | MD614BR01 |
| 19 | O Ring | MD621OR01 |
| 20 | Chuck (QL60) | MD615CK02 |

| Specification | Metric | Imperial |
|--|-------------------------|-------------------|
| Hammer Outside Diameter | 140mm | 5.5" |
| Hammer Length (Less Bit, Backhead Shoulder to Chuck) | 1139mm | 44.8" |
| Backhead Spanner Flat Size | 100mm | 4" |
| Drill Bit Shank Type | QL60 with no Foot Valve | |
| Minimum Bit Size | 152mm | 6.00" |
| Hammer Weight (Less Bit) | 115 Kgs | 253 Lbs |
| Drill Bit Weight (6 1/2"/165mm) | 24.5 Kgs | 54 Lbs |
| Piston Weight | 21.8 Kgs | 48 Lbs |
| Backhead Stand Off | 0.75mm | 0.030" |
| Wear Sleeve Reverse Limit | Non Reversible | |
| Wear Sleeve Discard Limit | 128.5mm | 5.060" |
| Recommended Minimum Air Package | 283 l/s @ 20.7 Bar | 600 cfm @ 300 psi |