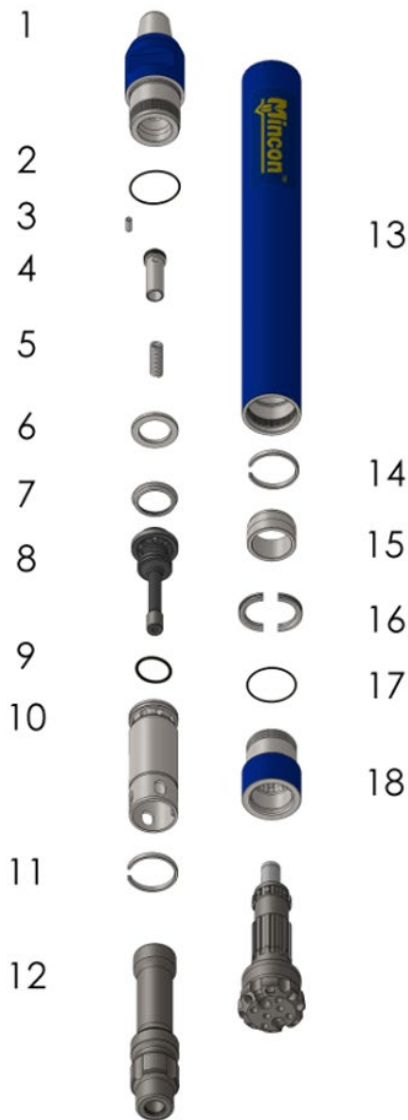


MP40



Parts and Specifications

Mincon MP40-TD DTH Hammer

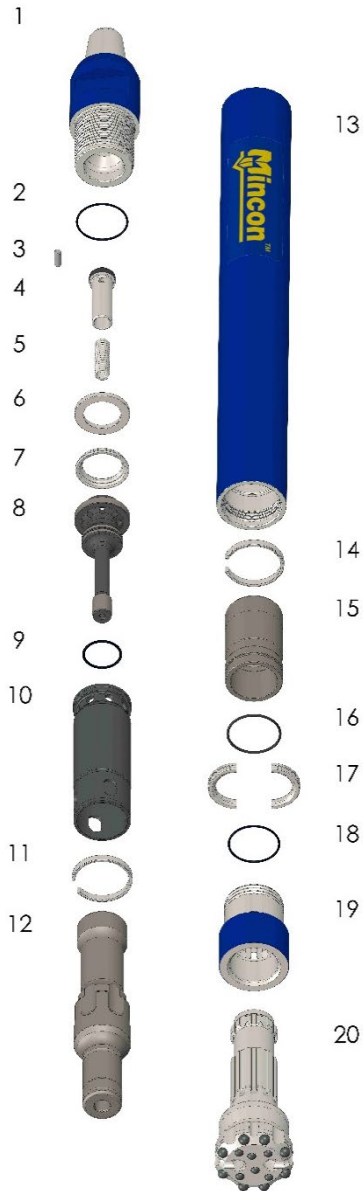


Item #	Part Number	Description
Mincon MP40-TD (2 3/8" A.P.I. Reg. Pin)		
1	MD401BH15	Backhead (2 3/8" A.P.I. Reg. Pin)
2	MD424OR01	O Ring
3	MB506CH01	Choke Blank
4	MB502CV01	Check Valve
5	MB503SP01	Spring
6	MD404SM01	Steel Make-Up Ring
7	MD405LR01	Lock Ring
8	MD407DR04	Air Distributor
9	MD421OR01	O Ring
10	MD408IC04	Inner Cylinder
11	MD412PR03	Inner Cylinder Retaining Ring
12	MD410PN12	Piston (TD)
13	MD411WS15	Wear Sleeve (TD)
14	MD412PR03	Piston Retaining Ring
15	MD418BB14	Aligner (TD)
16	MD413BR17	Bit Retaining Ring
17	MD420OR01	O Ring
18	MD414CK26	Chuck (TD40)
MD426SK02 Service Kit		
3	MB506CH01	Choke Blank
-	MB506CH02	Choke 1/8" (3.2mm)
-	MB506CH03	Choke 3/16" (4.8mm)
5	MB503SP01	Spring
-	MD425OK04	O-Ring Kit
MD425OK04 O-Ring Kit		
2	MD424OR01	O-ring
9	MD421OR01	O-ring
17	MD420OR01	O-ring

Specifications

Hammer Outside Diameter	101.5mm (4")
Hammer Length (Less Bit, Backhead Shoulder to Chuck)	981mm (38.6")
Backhead Spanner Flat Size	64mm (2.5")
Drill Bit Shank Type	TD40
Minimum Bit Size	110mm (4.3")
Hammer Weight (Less Bit)	41kg (90.4 lbs)
Drill Bit Weight	11.1kg (24.5 lbs)
Piston Weight	8.3kg (18.3 lbs)
Backhead Stand Off	0.75mm (0.03")
Make up Torque	4,050 – 5,425Nm (2,987 – 4000 lbf.ft)
Wear Sleeve Reverse Limit	N/A
Wear Sleeve Discard Limit	91mm (3.5")
Recommended Minimum Air Package	17 bar @ 165 L/s (250 psi @ 350 cfm)

Mincon MP40-MQ DTH Hammer

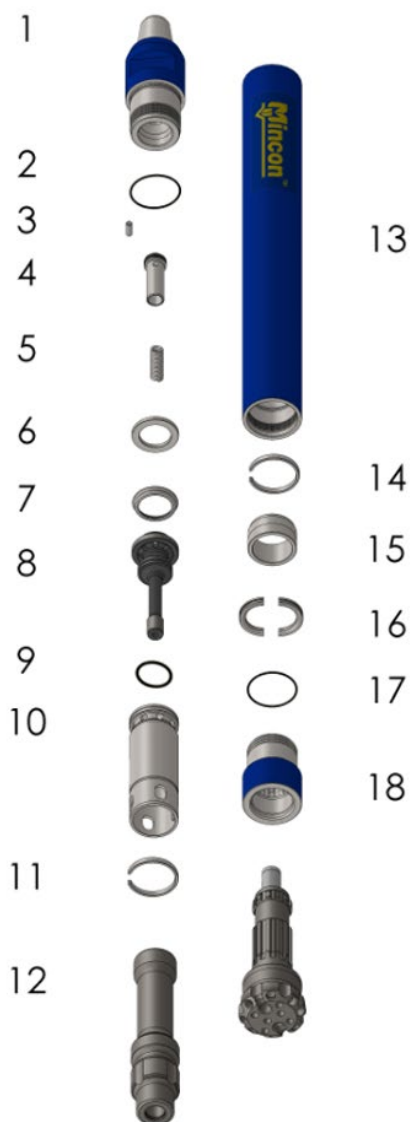


Item #	Part Number	Description
	MD401AS34	Mincon MP40-MQ (2 7/8" A.P.I. Reg. Pin)
1	MD401BH16	Backhead (2 7/8" A.P.I. Reg. Pin)
2	MD424OR01	O Ring
3	MB506CH01	Choke Blank
4	MB502CV01	Check Valve
5	MB503SP01	Spring
6	MD404SM01	Steel Make-Up Ring
7	MD405LR01	Lock Ring
8	MD407DR04	Air Distributor
9	MD421OR01	O Ring
10	MD408IC04	Inner Cylinder
11	MD412PR03	Inner Cylinder Retaining Ring
12	MD410PN13	Piston (MQ)
13	MD411WS16	Wear Sleeve (MQ)
14	MD412PR03	Piston Retaining Ring
15	MD418BB15	Aligner (MQ)
16	MB521OR01	O Ring
17	MD413BR17	Bit Retaining Ring
18	MD420OR01	O Ring
19	MD414CK26	Chuck (TD40)
	MD426SK03	Service Kit
3	MB506CH01	Choke Blank
-	MB506CH02	Choke 1/8" (3.2mm)
-	MB506CH03	Choke 3/16" (4.8mm)
5	MB503SP01	Spring
-	MD425OK03	O Ring Kit
		O Ring Kit
2	MD424OR01	O Ring
9	MD421OR01	O Ring
16	MD420OR01	O Ring
18	MB521OR01	O Ring

Specifications

Hammer Outside Diameter	101.5mm (4")
Hammer Length (Less Bit, Backhead Shoulder to Chuck)	981mm (38.6")
Backhead Spanner Flat Size	64mm (2.5")
Drill Bit Shank Type	TD40
Minimum Bit Size	110mm (4.3")
Hammer Weight (Less Bit)	43.5kg (96 lbs)
Drill Bit Weight	11.1kg (24.5 lbs)
Piston Weight	8.3kg (18.3 lbs)
Backhead Stand Off	0.45mm (0.02")
Make up Torque	4,050 – 5,425Nm
Wear Sleeve Reverse Limit	N/A
Wear Sleeve Discard Limit	91mm (3.5")
Recommended Minimum Air Package	17 bar @ 165 L/s (250 psi @ 350 cfm)

Mincon MP40-MP DTH Hammer



Item #	Part Number	Description
Mincon MP40-MP (2 3/8" A.P.I. Reg. Pin)		
1	MD401BH15	Backhead (2 3/8" A.P.I. Reg. Pin)
2	MD424OR01	O Ring
3	MB506CH01	Choke Blank
4	MB502CV01	Check Valve
5	MB503SP01	Spring
6	MD404SM01	Steel Make-Up Ring
7	MD405LR01	Lock Ring
8	MD407DR04	Air Distributor
9	MD421OR01	O Ring
10	MD408IC04	Inner Cylinder
11	MD412PR03	Inner Cylinder Retaining Ring
12	MD410PN12	Piston MP40 TD40
13	MD411WS15	Wear Sleeve MP40 TD40
14	MD412PR03	Piston Retaining Ring
15	MD418BB14	Aligner MP40 TD40
16	MD413BR21	Bit Retaining Ring
17	MD420OR01	O Ring
18	MD414CK30	Chuck (MP40 Shank)
19	MD426SK02	Service Kit
MD426SK02 Service Kit		
3	MB506CH01	Choke Blank
-	MB506CH02	Choke 1/8" (3.2mm)
-	MB506CH03	Choke 3/16" (4.8mm)
5	MB503SP01	Spring
-	MD425OK04	O Ring Kit
O Ring Kit		
2	MD424OR01	O Ring
9	MD421OR01	O Ring
17	MD420OR01	O Ring

Specifications

Hammer Outside Diameter	101.5mm (4")
Hammer Length (Less Bit, Backhead Shoulder to Chuck)	981mm (38.6")
Backhead Spanner Flat Size	64mm (2.5")
Drill Bit Shank Type	TD40
Minimum Bit Size	110mm (4.3")
Hammer Weight (Less Bit)	41kg (90.4 lbs)
Drill Bit Weight	11.1kg (24.5 lbs)
Piston Weight	8.3kg (18.3 lbs)
Backhead Stand Off	0.75mm (0.03")
Make up Torque	4,050 – 5,425Nm (2,987 – 4000 lbf.ft)
Wear Sleeve Reverse Limit	N/A
Wear Sleeve Discard Limit	91mm (3.5")
Recommended Minimum Air Package	17 bar @ 165 L/s (250 psi @ 350 cfm)