



SOLITARY RING BIT SYSTEMS

SOLITARY RING BIT SYSTEMS are designed for drilling end bearing piles to bed rock. System is designed to drill straight piles through boulders, rock layers and also into inclined bed rock. Heavy duty ring bit is not attached to casing shoe, which makes it most economical of the ring bit alternatives.

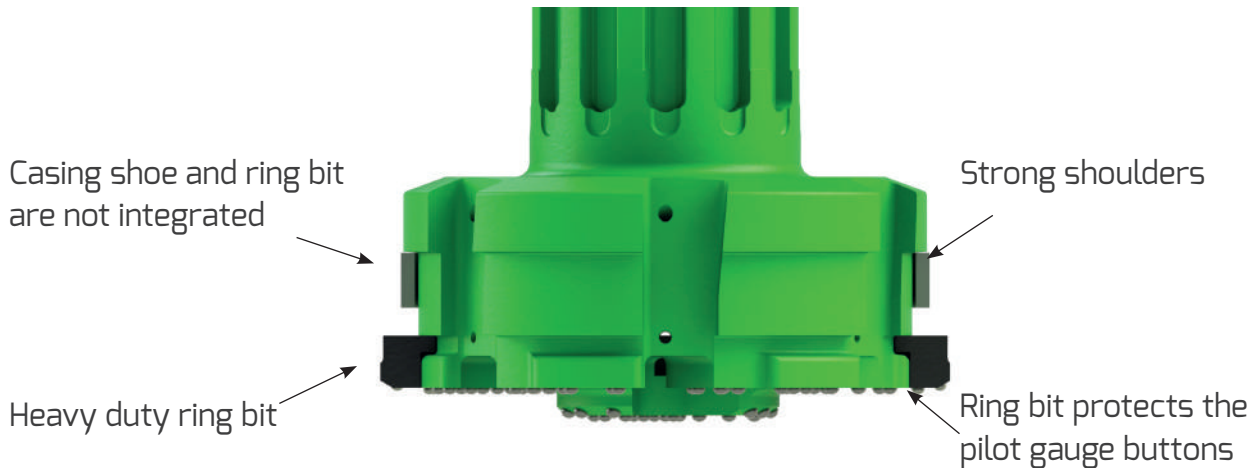


Main **applications** for solitary systems are:

1. End bearing piles including micro piling
2. Pilings with sacrificed casings, which have no large ID ring bit requirements
3. Slope stabilization
4. Pipe walls, king piles etc.



SOLITARY SYSTEM DESIGN FEATURES



System is available from 114 to 1422 mm casings and for all major shank designs.

System	OD (Inch)	Max wall	Ring bit ID	Ring bit OD	Pilot bit OD
S114-8-68	114,3 (4 1/2")	8	68	125	96
S140-10-86	139.7 (5 1/2")	10	86	149	119
S168-12.7-106	168.3 (6 5/8")	12,7	106	179	141
S178-12.7-116	177.8 (7")	12,7	116	188	152
S219-12.7-150	219.1 (8 5/8")	12,7	150	230	191
S273-12,7-192	273 (10 3/4")	12,7	192	290	245
S323-14.2-240	323.9 (12 3/4")	14,2	240	339	291
S406-16-328	406,4 (16")	16	328	418	370
S508-16-422	508 (20")	16	422	520	471
S610-16-502	609,6 (24")	16	502	622	572
S711-16-610	711,2 (28")	16	610	735	675
S813-16-700	812,8 (32")	16	700	835	769
S914-16-800	914.4 (36")	16	800	930	869
S1016-20-880 *	1016 (40")	20	880	1032	966
S1220-20-1080 *	1219.2 (48")	20	1080	1240	1168
S1321-22-1160 *	1320.8 (52")	22	1150	1344	1247
S1422-22-1250 *	1422.4 (56")	22	1250	1446	1348
S1524-22-1340*	1524 (60")	22	1340	1548	1462

*Large diameter system can be engineered based on the specific customer requirements