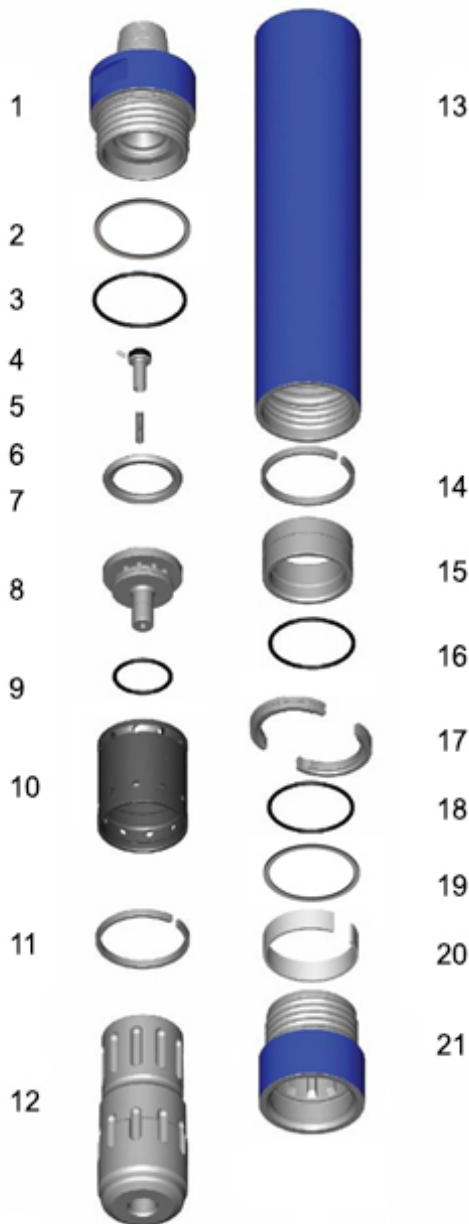


# MP120



## Parts and Specifications

## Mincon MP120 QL DTH Hammer

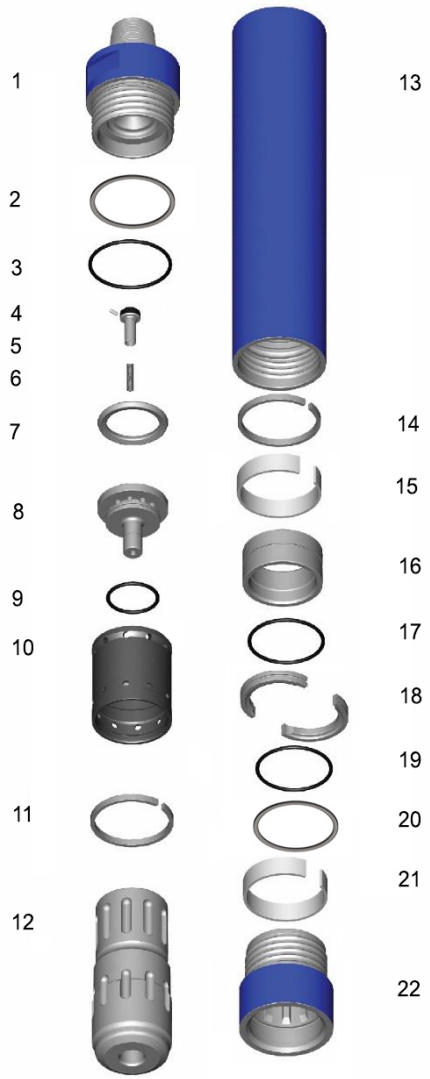


Item #	Part Number	Description
	<b>MD1201AS04</b>	<b>Mincon MP120 QL (6 5/8" A.P.I. Reg. Pin)</b>
1	MD1201BH01	Backhead (6 5/8" A.P.I. Reg. Pin)
2	MD1217BO02	Backhead Break Out Ring
3	MD1220OR01	O Ring
4	MB506CH01	Choke Blank
5	MD1202CV02	Check Valve
6	MD1203SP01	Spring
7	MD1205LR01	Lock Ring
8	MD1207DR11	Air Distributor
9	MD1221OR01	O Ring
10	MD1208IC10	Inner Cylinder
11	MD1212PR11	Piston Retaining Ring
12	MD1210PN11	Piston
13	MD1211WS10	Wear Sleeve
14	MD1212PR11	Piston Retaining Ring
15	MD1213BB10	Aligner (QL120)
16	MD1220OR01	O Ring
17	MD1214BR10	Bit Retaining Ring
18	MD1223OR01	O Ring
19	MD1217BO03	Chuck Breakout Ring
20	MD1216CB02	Chuck Bush (QL120)
21	MD1215CK04	Chuck (QL120)
	MD1226SK02	Service Kit
	<b>MD1226SK03</b>	<b>Service Kit</b>
4	MB506CH01	Choke Blank
	MB506CH02	Choke 1/8" (3.2mm)
	MB506CH03	Choke 3/16" (4.8mm)
6	MD1203SP01	Spring
	MD1225OK03	O Ring Kit
	<b>MD1225OK03</b>	<b>O Ring Kit</b>
3	MD1220OR01	O Ring
9	MD1221OR01	O Ring
16	MD1220OR01	O Ring
18	MD1223OR01	O Ring

### Specifications

	Metric
Hammer Outside Diameter	273mm (10.75")
Hammer Length (Less Bit, Backhead Shoulder to Chuck)	1,454mm (57.2")
Backhead Spanner Flat Size	240mm (9.5")
Drill Bit Shank Type	QL120
Minimum Bit Size	305mm (12")
Hammer Weight (Less Bit)	457kg (1,008 lbs)
Drill Bit Weight (305mm/12")	128.6kg (283 lbs)
Piston Weight	138.5kg (305 lbs)
Backhead Stand Off	1.1mm (0.043")
Make up Torque	15,250-16,270Nm (11,250-12,000 lbf.ft)
Wear Sleeve Reverse Limit	Non-Reversible
Wear Sleeve Discard Limit	255.3mm (10")
Recommended Minimum Air Package	519 L/s @ 24.1 bar (1,100 cfm @ 350 psi)

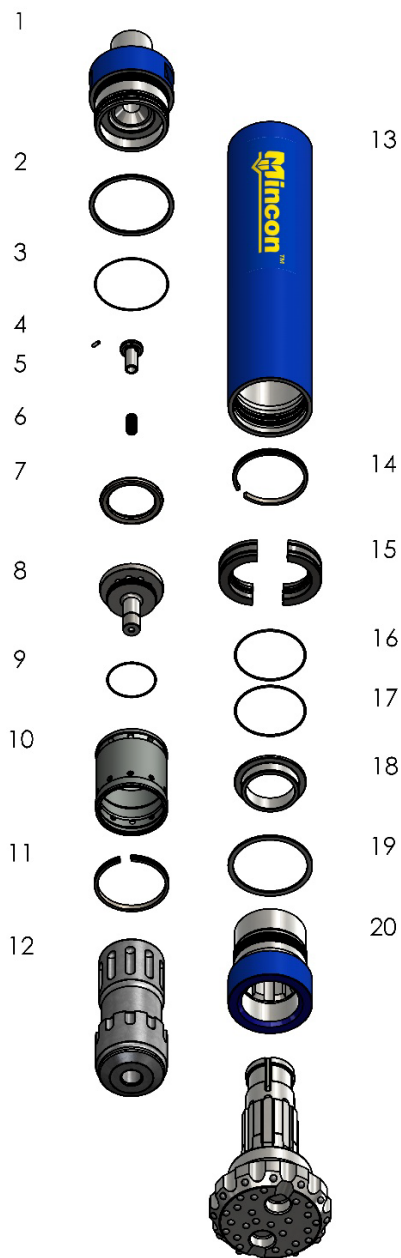
Mincon MP120 N125 DTH Hammer



Item #	Part Number	Description
	<b>MD1201AS05</b>	<b>Mincon MP120 N125 (6 5/8" A.P.I. Reg. Pin)</b>
1	MD1201BH01	Backhead (6 5/8" A.P.I. Reg. Pin)
2	MD1217BO02	Backhead Breakout Ring
3	MD1220OR01	O Ring
4	MB506CH01	Choke Blank
5	MD1202CV02	Check Valve
6	MD1203SP01	Spring
7	MD1205LR01	Lock Ring
8	MD1207DR11	Air Distributor
9	MD1221OR01	O Ring
10	MD1208IC10	Inner Cylinder
11	MD1212PR11	Retaining Ring
12	MD1210PN12	Piston
13	MD1211WS10	Wear Sleeve
14	MD1212PR11	Retaining Ring
15	MD1232AB01	Aligner Bush (N125)
16	MD1213BB12	Aligner (N125)
17	MD1220OR01	O Ring
18	MD1214BR11	Bit Retaining Ring
19	MD1223OR01	O Ring
20	MD1217BO03	Chuck Breakout Ring
21	MD1216CB04	Chuck Bush (N125)
22	MD1215CK06	Chuck (N125)
	MD1226SK02	Service Kit
	<b>MD1226SK03</b>	<b>Service Kit</b>
4	MB506CH01	Choke Blank
	MB506CH02	Choke 1/8" (3.2mm)
	MB506CH03	Choke 3/16" (4.8mm)
6	MD1203SP01	Spring
	MD1225OK03	O Ring Kit
	<b>MD1225OK03</b>	<b>O Ring Kit</b>
3	MD1220OR01	O Ring
9	MD1221OR01	O Ring
17	MD1220OR01	O Ring
19	MD1223OR01	O Ring

Specifications	Metric
Hammer Outside Diameter	273mm (10.75")
Hammer Length (Less Bit, Backhead Shoulder to Chuck)	1452mm (57.2")
Backhead Spanner Flat Size	240mm (9.5")
Drill Bit Shank Type	N125
Minimum Bit Size	305mm (12")
Hammer Weight (Less Bit)	454kg (1,001 lbs)
Drill Bit Weight (305mm/12")	128.6kg (283 lbs)
Piston Weight	138.3kg (305 lbs)
Backhead Stand Off	2mm (0.08")
Make up Torque	15,250-16,270Nm (11,250-12,000 lbf.ft)
Wear Sleeve Reverse Limit	Non-Reversible
Wear Sleeve Discard Limit	255.3mm (10")
Recommended Minimum Air Package	519 L/s @ 24.1 bar (1,100 cfm @ 350 psi)

Mincon MP120SD DTH Hammer



Item #	Part Number	Description
	<b>MD1201AS07</b>	<b>Mincon MP120-SD12 (6 5/8" A.P.I. Reg. Pin)</b>
1	MD1201BH01	Backhead (6 5/8" A.P.I. Reg. Pin)
2	MD1217BO02	Backhead Breakout Ring
3	MD1220OR01	O Ring
4	MB506CH01	Choke Blank
5	MD1202CV02	Check Valve
6	MD1203SP01	Spring
7	MD1205LR01	Lock Ring
8	MD1207DR11	Air Distributor
9	MD1221OR01	O Ring
10	MD1208IC10	Inner Cylinder
11	MD1212PR11	IC Retaining Ring
12	MD1210PN13	Piston
13	MD1211WS10	Wear Sleeve
14	MD1212PR11	Piston Retaining Ring
15	MD1214BR12	Bit Retaining Ring
16	MD1223OR01	O Ring
17	MD1223OR01	O Ring
18	MD1216CB03	SD12 Chuck Bush
19	MD1217BO03	Chuck Breakout Ring
20	MD1215CK08	Chuck (SD12)
21	MD1226SK02	Service Kit
22	MD1227PL01	Piston Lifting Tool
-	<b>MD1226SK04</b>	<b>Service Kit</b>
4	MB506CH01	Choke Blank
-	MB506CH02	Choke 1/8" (3.2mm)
-	MB506CH03	Choke 3/16" (4.8mm)
6	MD1203SP01	Spring
-	MD1225OK04	O Ring Kit
	<b>MD1225OK04</b>	<b>O Ring Kit</b>
3	MD1220OR01	O Ring
9	MD1221OR01	O Ring
16	MD1223OR01	O Ring
17	MD1223OR01	O Ring

**Specifications**

	<b>Metric</b>
Hammer Outside Diameter	273mm (10.75")
Hammer Length (Less Bit, Backhead Shoulder to Chuck)	1431mm (56.34")
Backhead Spanner Flat Size	240mm (9.5")
Drill Bit Shank Type	SD12
Minimum Bit Size	305mm (12")
Hammer Weight (Less Bit)	469kg (1,034 lbs)
Drill Bit Weight (305mm/12")	128.6kg (283 lbs)
Piston Weight	130.8kg (288 lbs)
Backhead Stand Off	1.1mm (0.043")
Make up Torque	15,250-16,270 Nm (11,250-12,000 lbf.ft)
Wear Sleeve Reverse Limit	Non Reversible
Wear Sleeve Discard Limit	255.3mm (10")
Recommended Minimum Air Package	519 l/s @ 24.1 Bar (1,100 cfm @ 350 psi)

Mincon MP120 N120 DTH Hammer



Item #	Part Number	Description
	<b>MD1201AS08</b>	<b>Mincon MP120-N120 (6 5/8" API Reg Pin)</b>
1	MD1201BH01	Backhead (6 5/8" API Reg Pin)
2	MD1217BO02	Backhead Breakout Ring
3	MD1220OR01	O Ring
4	MB506CH01	Choke Blank
5	MD1202CV02	Check Valve
6	MD1203SP01	Spring
7	MD1205LR01	Lock Ring
8	MD1207DR11	Air Distributor
9	MD1221OR01	O Ring
10	MD1208IC10	Inner Cylinder
11	MD1212PR11	Piston Retaining Ring
12	MD1210PN14	Piston (N120)
13	MD1211WS10	Wear Sleeve
14	MD1212PR11	Inner Cylinder Retaining Ring
15	MD1213BB13	Aligner (N120)
16	MD1220OR01	O Ring
17	MD1214BR13	Bit Retaining Ring
18	MD1223OR01	O Ring
19	MD1217BO03	Chuck Breakout Ring
20	MD1216CB05	Chuck Bush (N120)
21	MD1215CK09	Chuck (N120)
	<b>MD1226SK03</b>	<b>Service Kit</b>
4	MB506CH01	Choke Blank
-	MB506CH02	Choke 1/8" (3.2mm)
-	MB506CH03	Choke 3/16" (4.8mm)
6	MD1203SP01	Spring
-	MD1225OK03	O Ring Kit
	<b>MD1225OK03</b>	<b>O-Ring Kit</b>
3	MD1220OR01	O Ring
9	MD1221OR01	O Ring
16	MD1220OR01	O Ring
18	MD1223OR01	O Ring

**Specifications**

**Metric**

Hammer Outside Diameter	273mm (10.75")
Hammer Length (Less Bit, Backhead Shoulder to Chuck)	1,452mm (57.2")
Backhead Spanner Flat Size	240mm (9.5")
Drill Bit Shank Type	N120
Minimum Bit Size	305mm (12")
Hammer Weight (Less Bit)	474kg (1,045 lbs)
Drill Bit Weight (305mm/12")	128.6kg (283 lbs)
Piston Weight	129.6kg (286 lbs lbs)
Backhead Stand Off	1.1mm (0.043")
Make up Torque	15,250-16,270Nm (11,250-12,000 lbf.ft)
Wear Sleeve Reverse Limit	Non-Reversible
Wear Sleeve Discard Limit	255.3mm (10")
Recommended Minimum Air Package	519 L/s @ 24.1 bar (1,100 cfm @ 350 psi)