

**THE KEY  
ISSUE**



**MODULAR**  
LIGHTING INSTRUMENTS

**MODULAR** understands the importance attached by consumers to lighting, design and technology. By consistently coming up with and creating clever, amazing and energy-friendly lighting solutions, we are constantly pushing the boundaries of architectural lighting. We continue to set the trend with our thoroughly well-thought-out handling of bold design. By making use of cutting-edge LED technologies and anticipating future energy trends, we remain faithful to our global role of pioneers in the industry, always keeping one step ahead. Rather than standing out, we achieve this with a discreet presence. This means the right solution, appropriate intensity and the desired result. To create the best lighting solution with Modular lighting, we listed some tips for each room.

---

## GENERAL TIPS

### ... FOR THE KITCHEN

- Lighting in the kitchen has a dual purpose: sharp and bright light for working and cooking, as well as atmospheric lighting for sitting down to an enjoyable meal.
- Pay attention to the natural incidence of light and avoid having light fall on your back so you are not cooking or working in your own shadow.
- Ensure good basic lighting supplemented with functional lighting above the cooking area, the worktop or beneath the wall cabinets.
- The lighting above these areas must be well-diffused and provide the necessary lux level (between 300 and 400 lux).

### ... FOR THE LIVING ROOM

- The living room has a host of functions: dining area, TV corner, reception and sometimes even an office area. Dining with friends, watching TV on the settee, reading a book – every situation calls for a different lighting effect. So, a combination of different types of light is needed.
- Ensure good basic lighting using well-diffused built-in spotlights. Use directable spotlights to accentuate works of art, photos and the like.
- Wall lighting, indirect lighting and decorative lighting give the room extra warmth.
- Ensure different, separate circuits and make sure that all the lighting can be dimmed.
- Bear in mind that dark walls absorb more light.

### ... FOR THE HALL AND STAIRCASE

- Work with a separate circuit so that you can control the lighting in the hall and staircase separately.
- The use of the same type of lighting in both the hall and the adjoining living areas creates a uniform feeling and brings tranquillity to your home.
- First impressions are important. Use a real attention-grabber if the hall is large to forge a connection between the high ceiling and the walking space used.
- In a small hall it is best to work with rigid lines of light to create a larger space.
- The light in the hall is perhaps on for longest in the average home, so we recommend that you use energy-efficient bulbs.
- Ensure good lighting alongside the staircase. Use orientation lighting in the stairs or along the wall at the height of the stairs. This type of lighting actually accentuates the architectural character of the staircase.

### ... FOR THE BEDROOM

- Provide different lighting to suit the various functions in a bedroom – settling down, reading a book, picking out clothes, etc.
- Good basic lighting is important. Provide different power points. Make sure that you can switch off and, optionally, dim the lights both by the door and by your bed.
- For reading, it is best to provide directable lighting next to both sides of the bed. You can opt specifically for a mounted fitting or for a bedside table lamp. Make sure that you can also dim this lighting.
- Indirect wall lighting behind the bed creates a feeling of warmth in the room.

### ... FOR THE BATHROOM

- Pay attention to damp and wet areas and consider the IP rating of the appliances you want to install there.
- Ensure good basic lighting combined with atmospheric lighting to create the ultimate spa experience.
- At the washbasin with mirror above you should always bear in mind the shadow caused by light reflecting on your face. A diffused light on both sides or on the ceiling above the washbasin creates a better effect.
- To create a pleasant spa experience it is best to work with wall fittings, making sure these are on a separate circuit and can also be dimmed.

### ... FOR THE GARDEN AND TERRACE

- Fittings with LED and fluorescent lamps combined with motion and dusk sensors provide for the perfect ambience and comfort.
- Go green and use LED lights outside. Their longer life span will keep your maintenance and replacement costs down.
- Play with different heights of lighting so you create depth in your outside space.
- Bring your inside outside by using the same light fittings on the terrace. Note the correct IP rating!

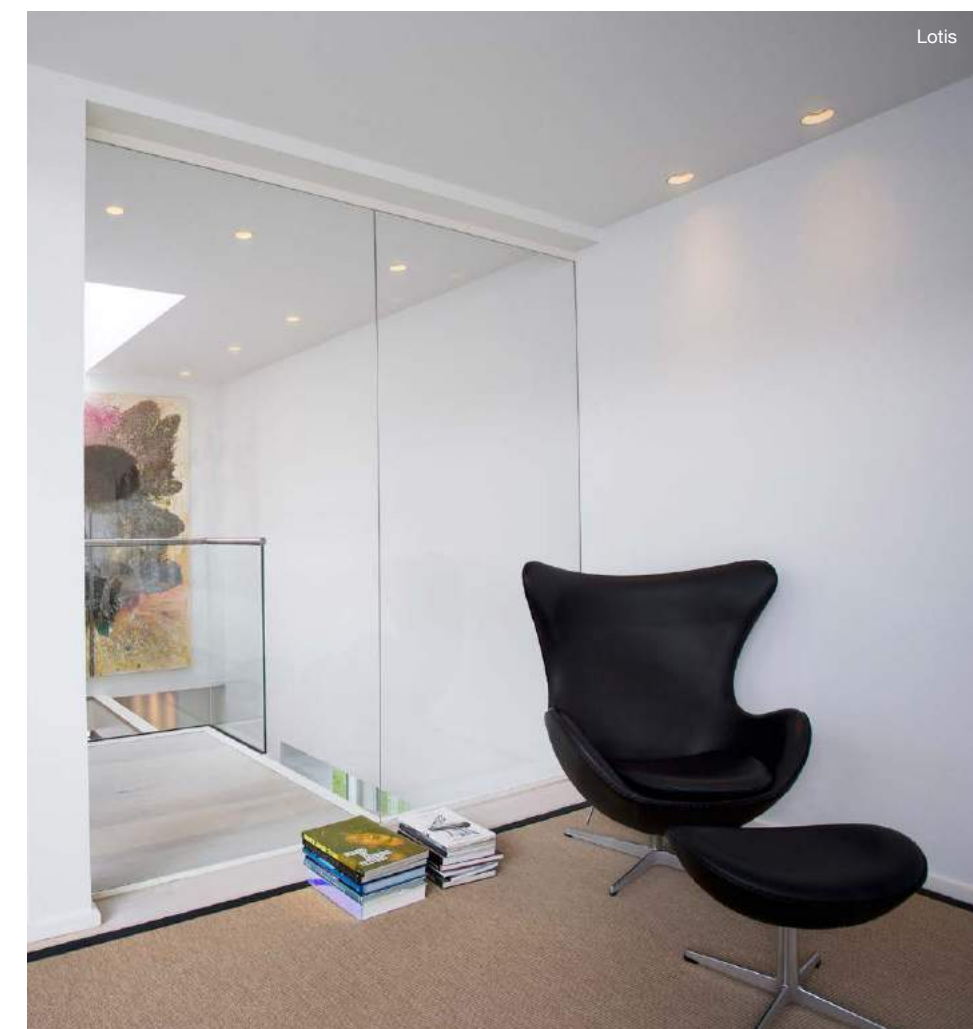
---

 **GETTING INSPIRED**

MEET THE NEIGHBOURS.



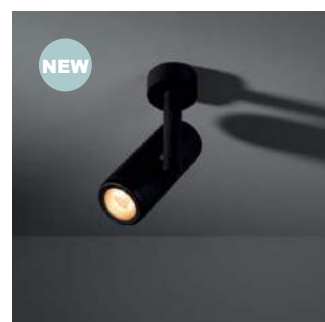
**LIVING ROOM**  
VERSATILITY @ HOME.



Multiple(x)



Scotty adjustable



Médard ceiling



Spock wall



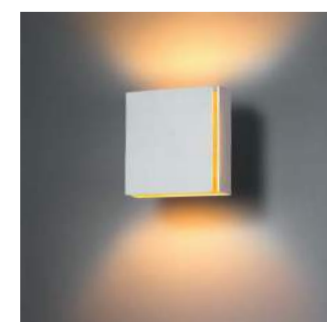
Trapz



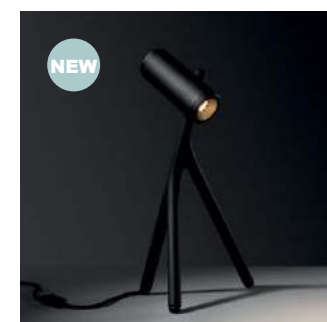
Lotis tubed



Smart lotis



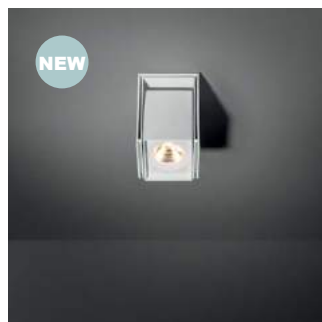
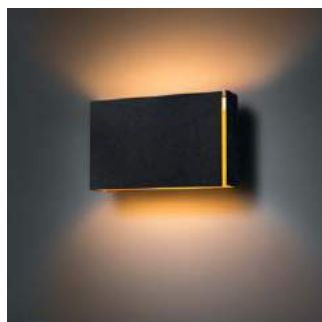
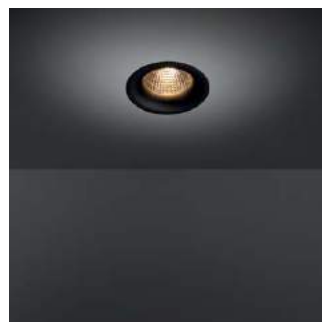
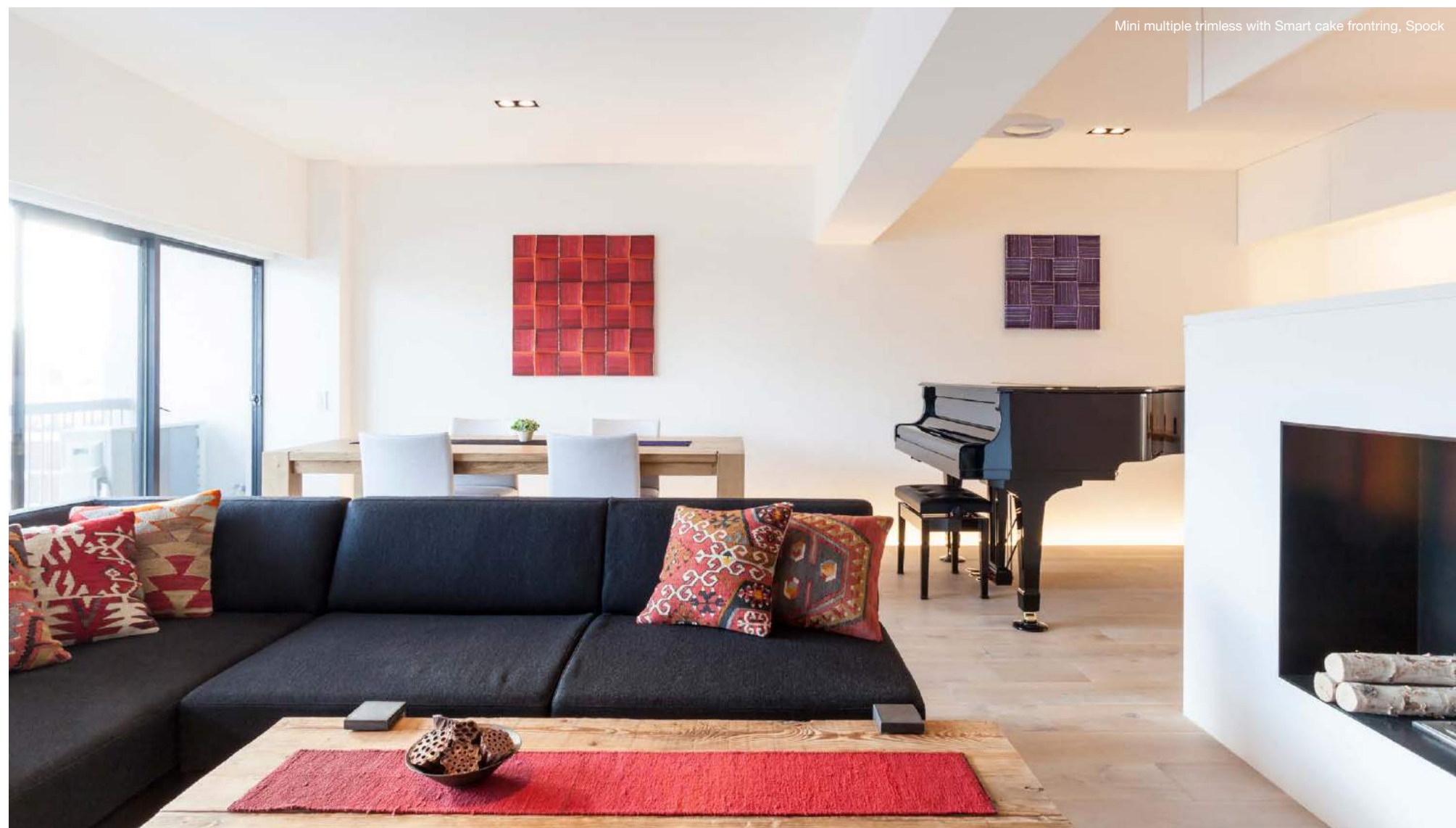
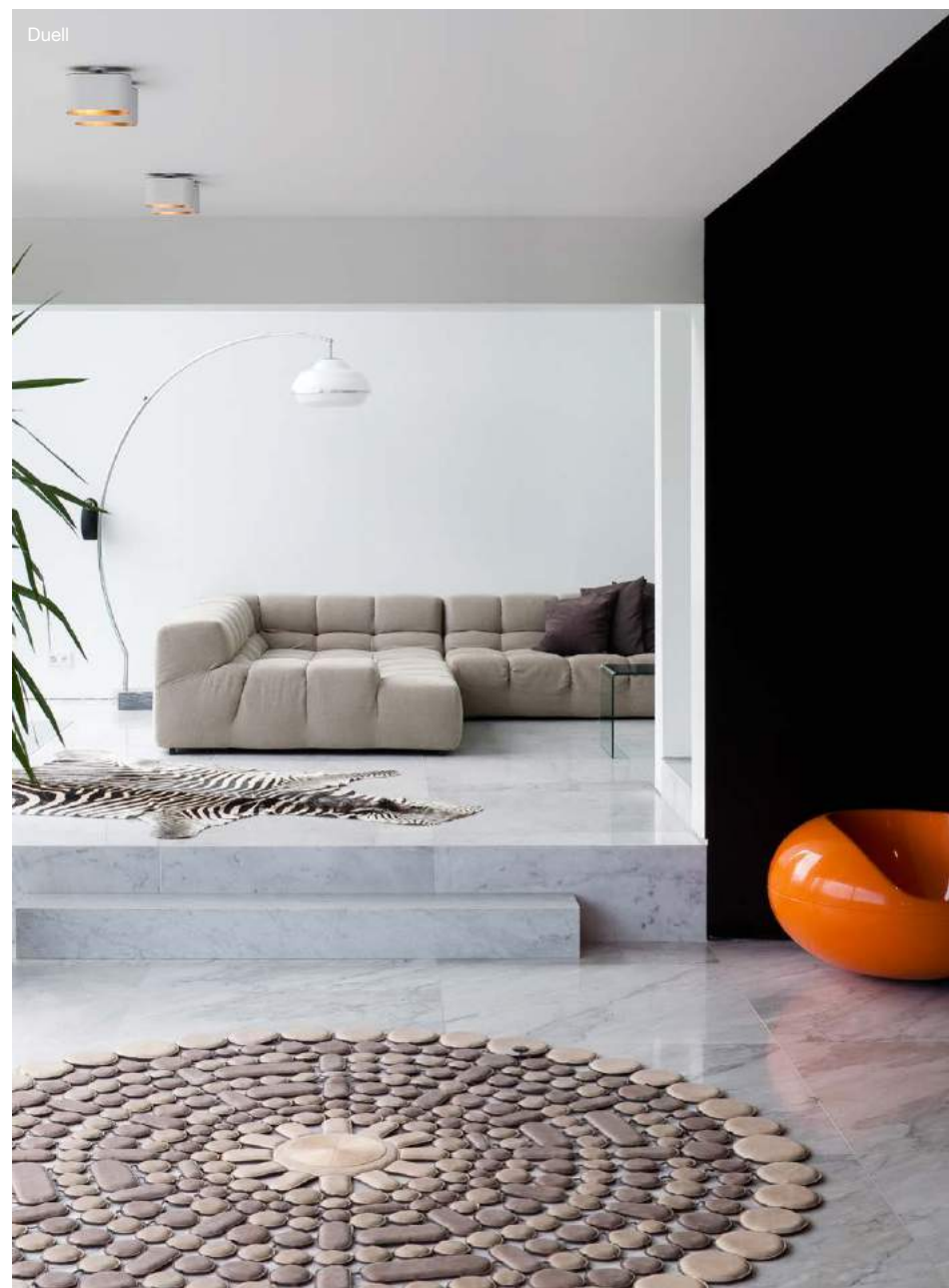
Split medium



Médard

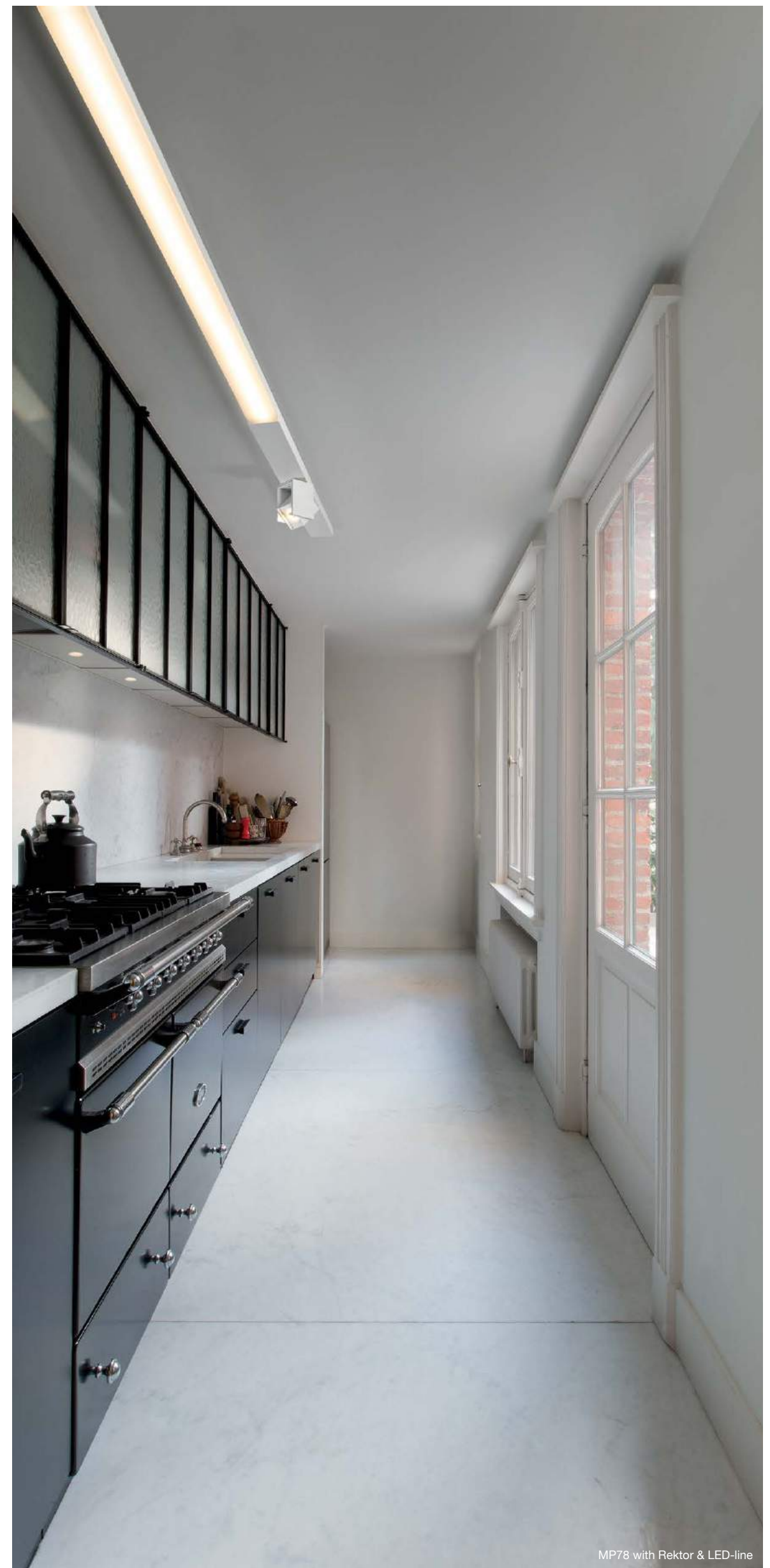
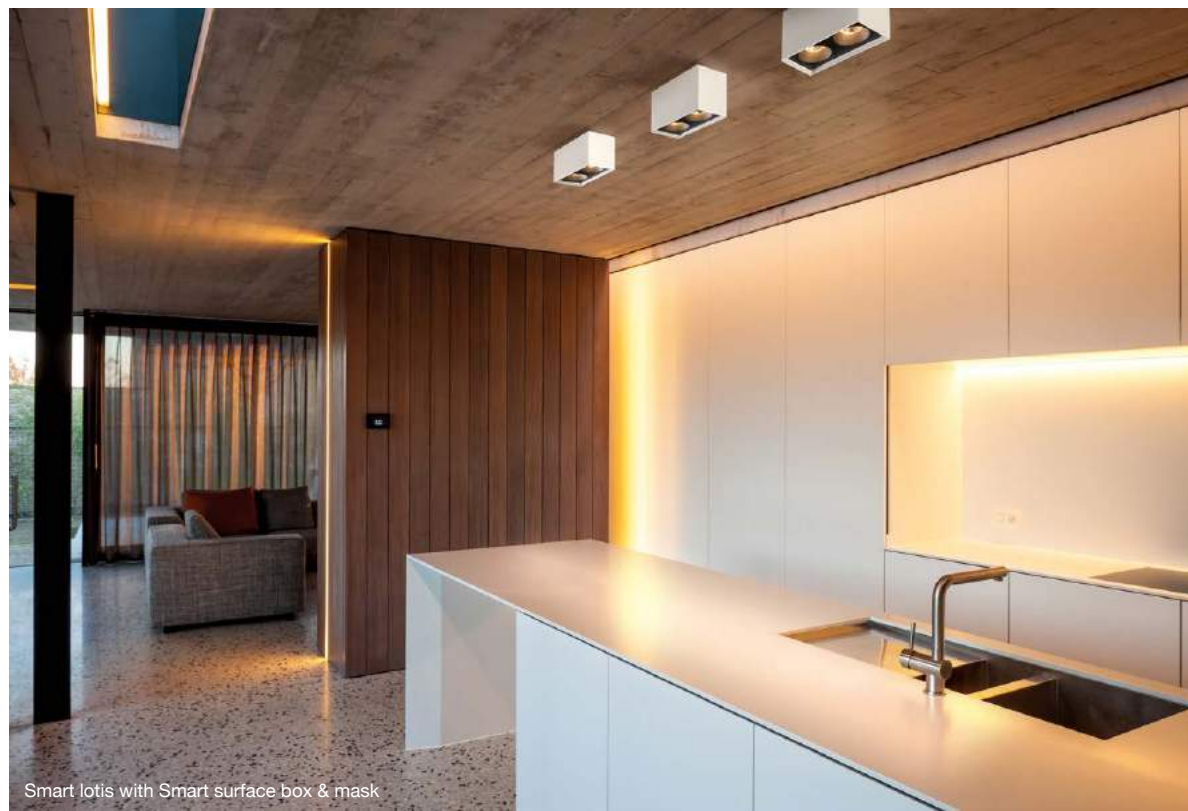
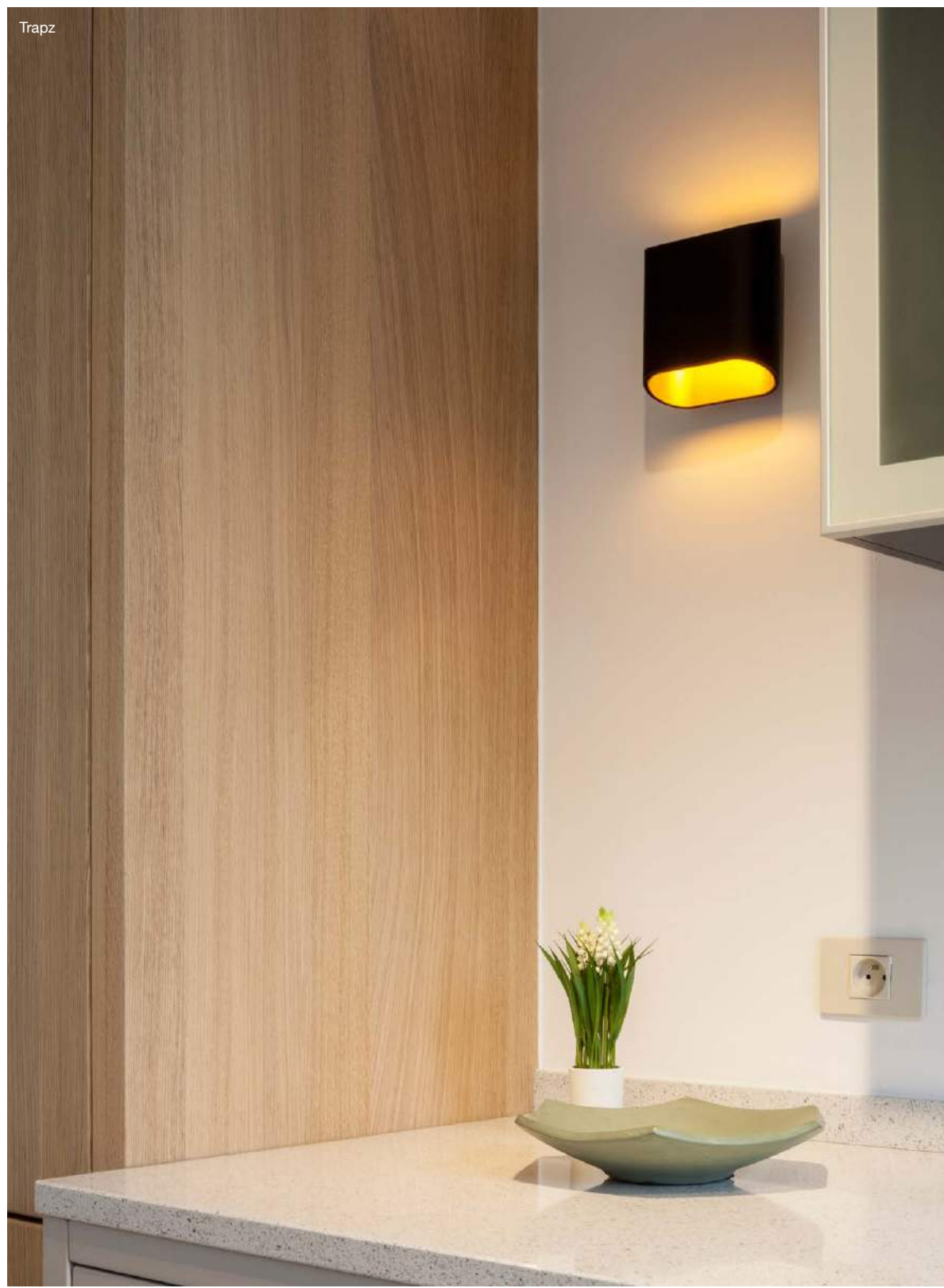


Kurk



# KITCHEN

LIGHT GASTRONOMY.



Flat moon square



Stove LED



Cake



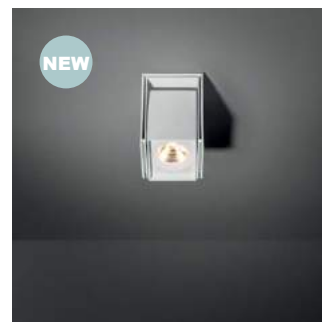
Smart lotis with Smart surface box & mask



Trapz



Kurk surface



Rektor recessed



Bolster foot



Soufflé suspension



MP78 with Rektor



Kurk recessed



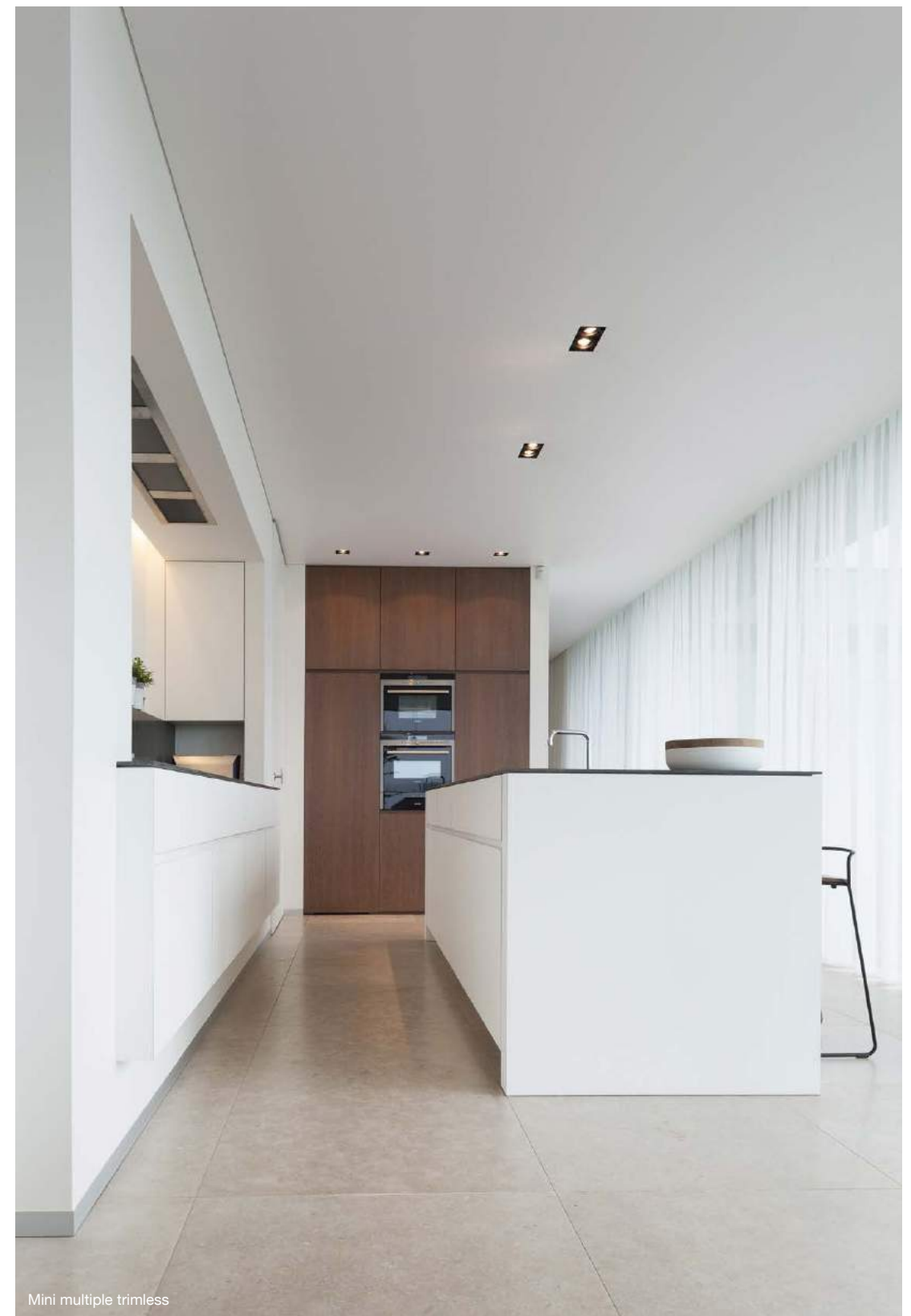
Kurk, Lotis



Nomad, Smart lotis



SL mini naked, SL nano



Mini multiple trimless



Médard track



Kurk surface



Lotis tubed suspension



SL mini naked



Spock foot



Smart kup with Smart surface box & mask



Smart cake with Smart surface tubed



Mini multiple trimless



Nomad



Smart lotis with Smart surface box & mask



Duell



Nomad minimal short

**BATHROOM**  
SOAK UP THE LIGHT.



Lotis tubed



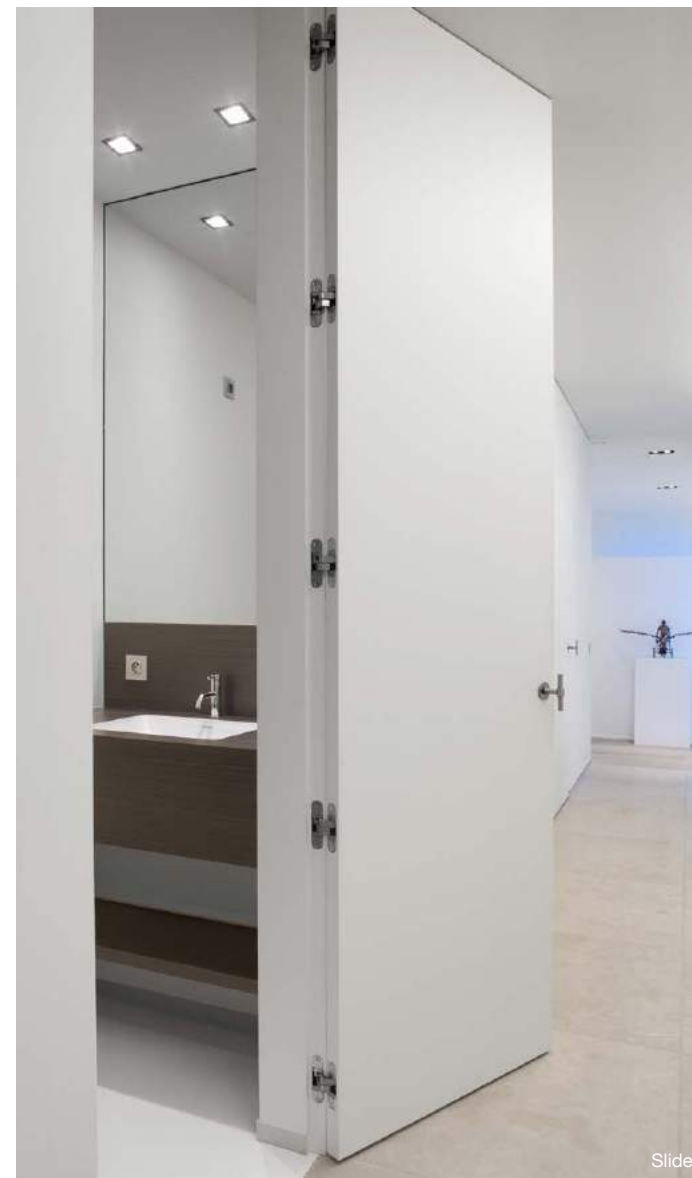
Mini multiple trimless



Duell wall



Lotis tubed, Duell



Slide



Duell



Downnut



Duell wall



Lotis tubed



United



Duell recessed



Smart cake with Smart mask



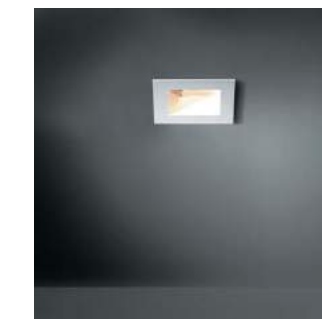
Smart kup with Smart surface tubed



Lotis square



Smart cake diffuse



Slide square

Medard



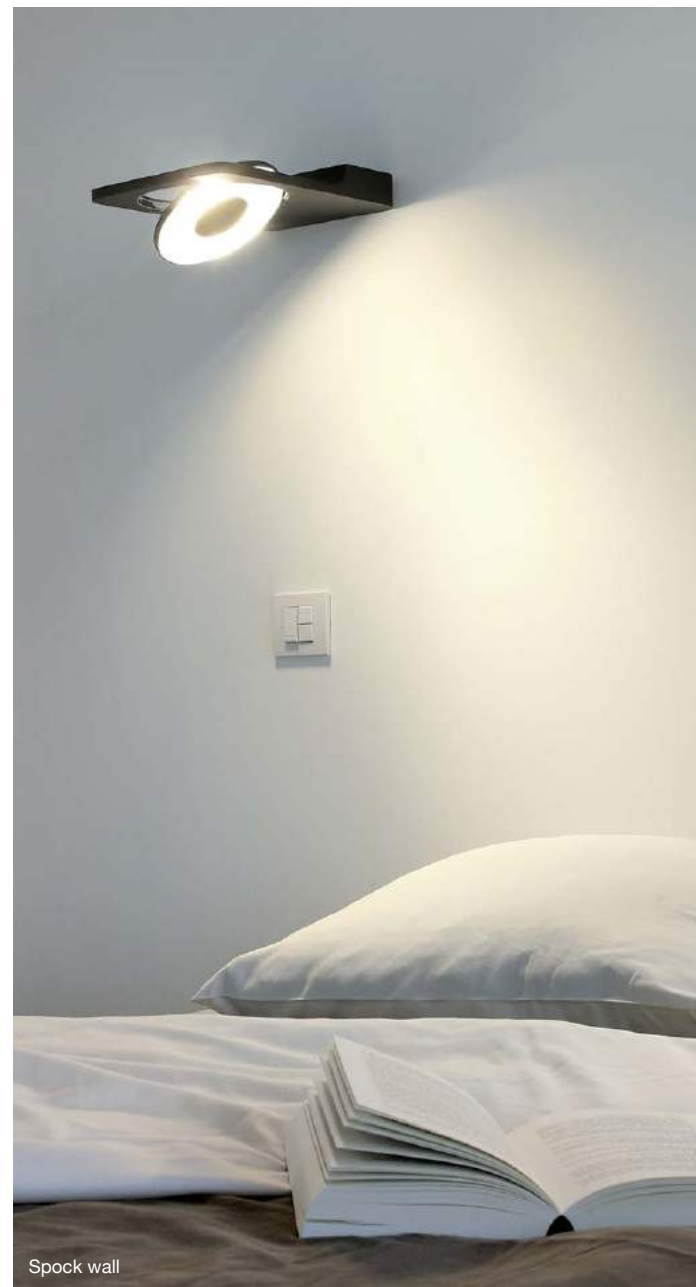
# KEY BEDROOM

RISE AND SHINE.

Lotis



Spock wall



Lotis tubed



Nomad

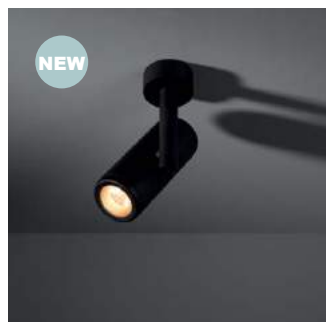
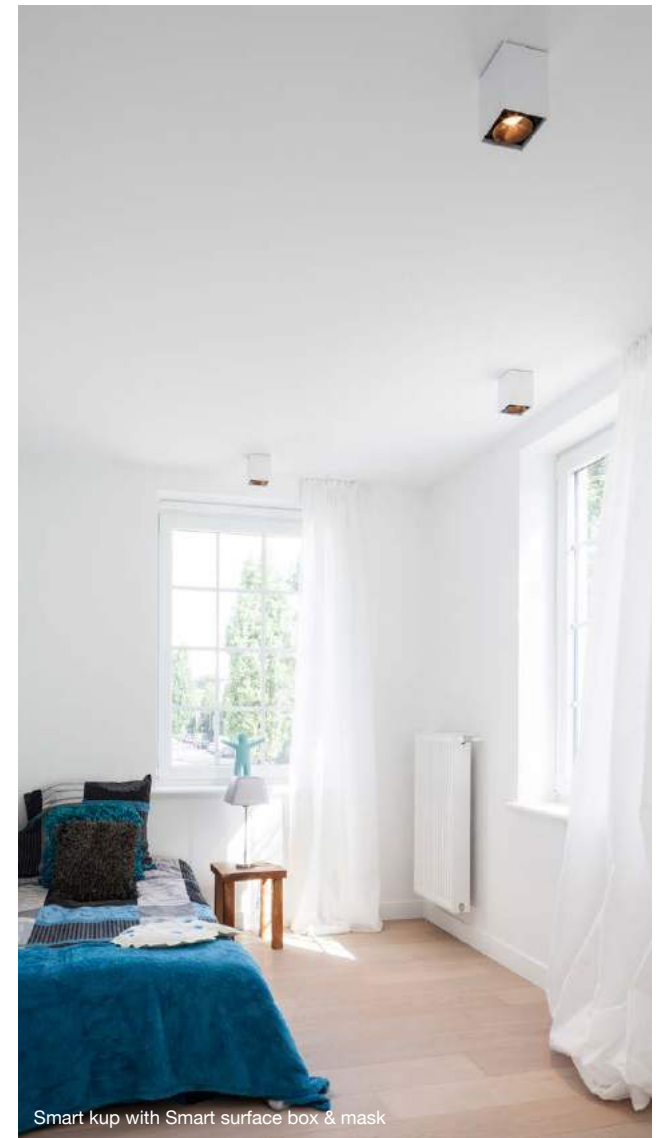
Duell surface



SL149



Smart kup with Smart surface box & mask



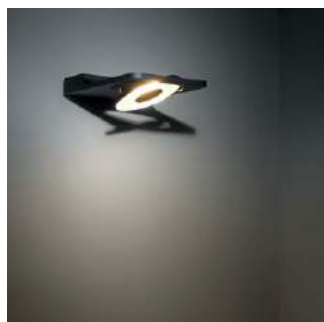
Medard ceiling



Kurk



Smart lotis



Spock wall



Medard



Split small



Trapz



SL149 with M-LED 111

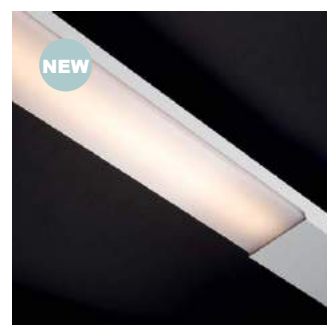
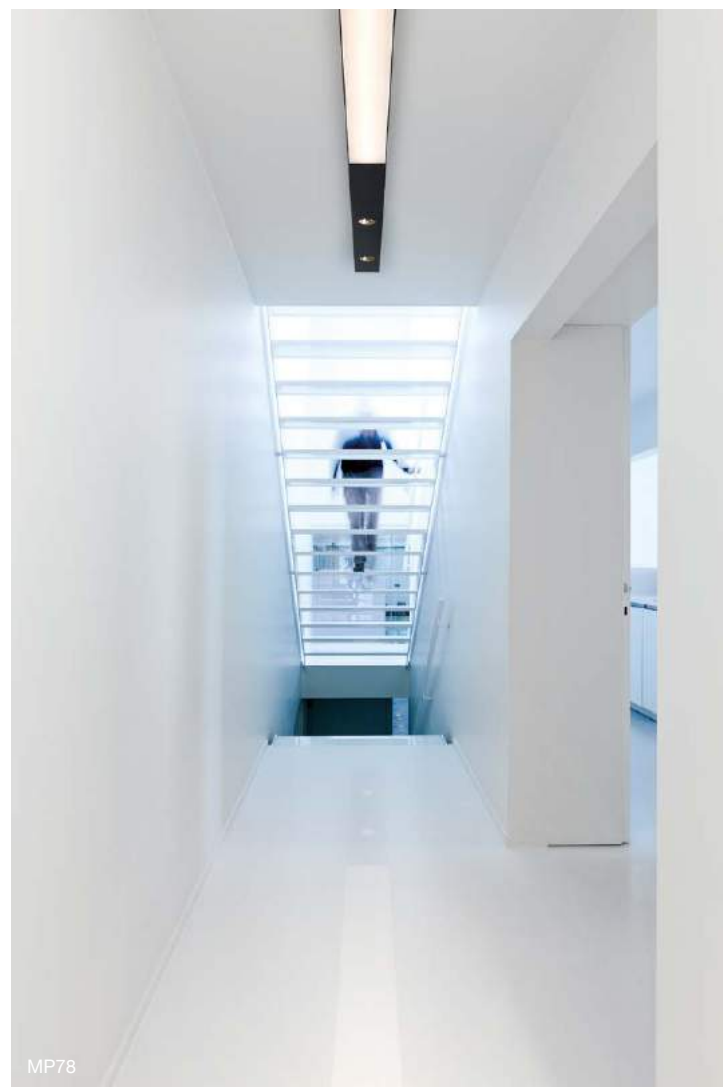


Lotis tubed wall



Smart cake with Smart surface box & mask





# CREATIVE SPACES

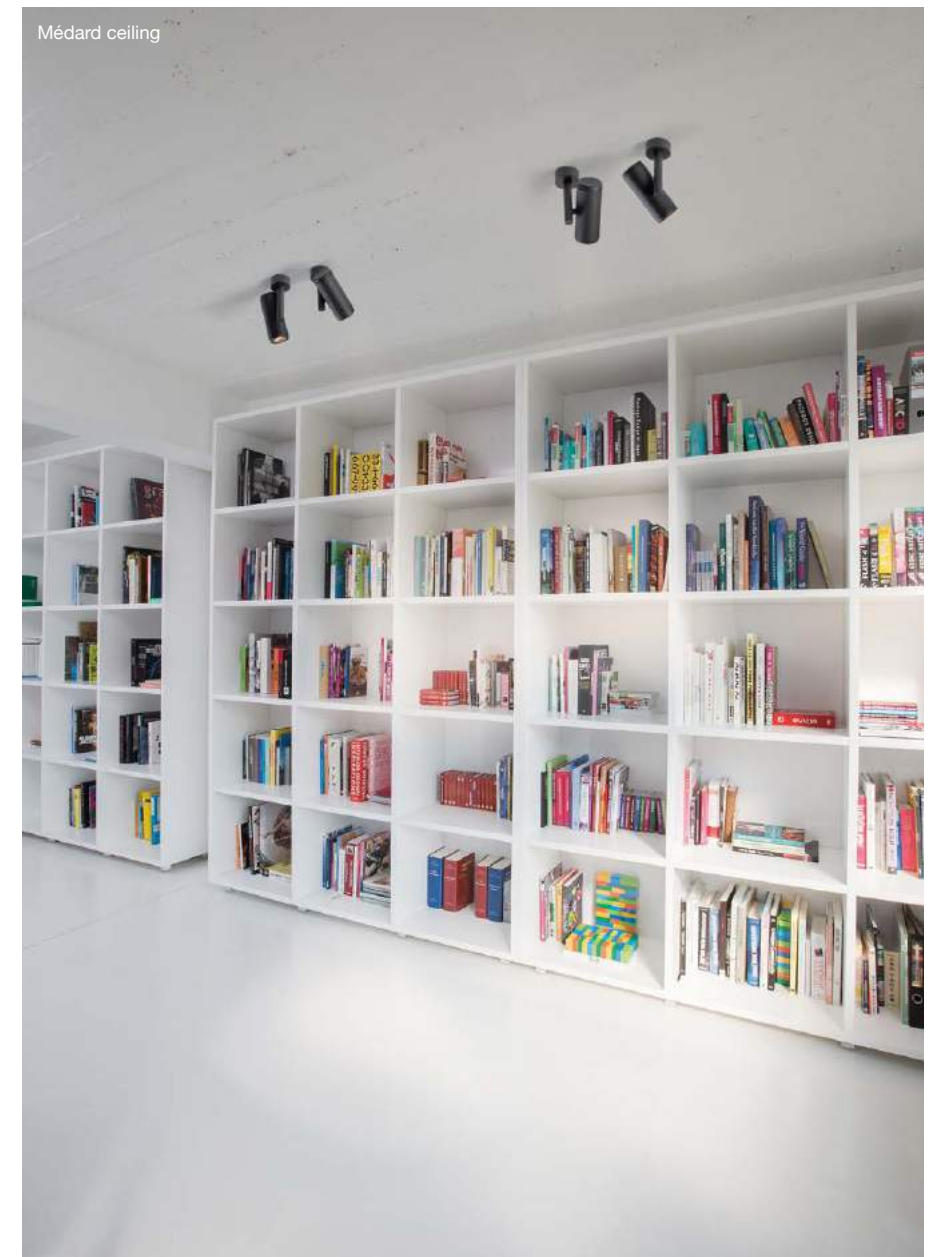
BRIGHT IDEAS.



Nomad



SL mini naked



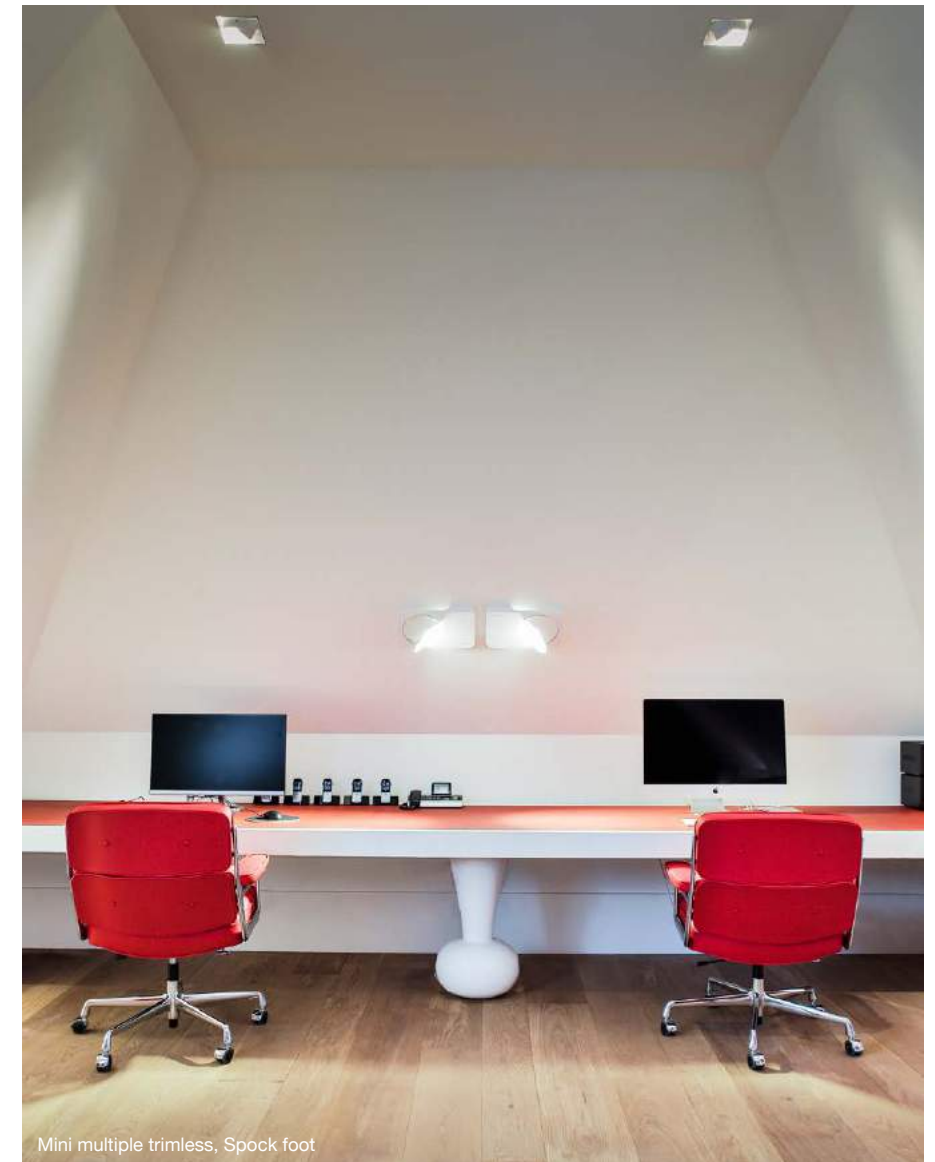
Médard ceiling



Mini multiple trimless, 2FLAT2C



Nomad



Mini multiple trimless, Spock foot



Multiple



Nomad minimal desk



2FLAT2C with Smart cake



Nomad



SL mini poly out



M06



United



SL100 with Smart kup



Izar LED



Flat moon LED

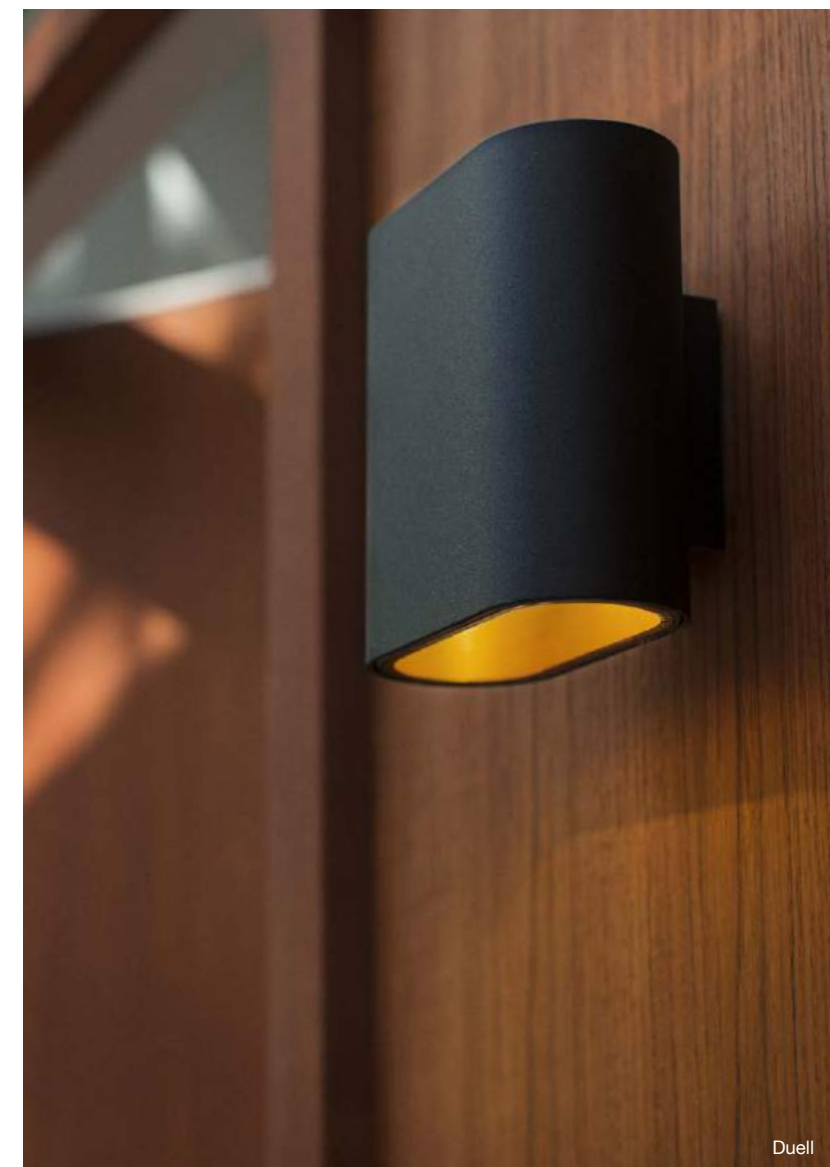


**EXTERIOR**  
OUTDOOR LIVING.

Duell



Buzze



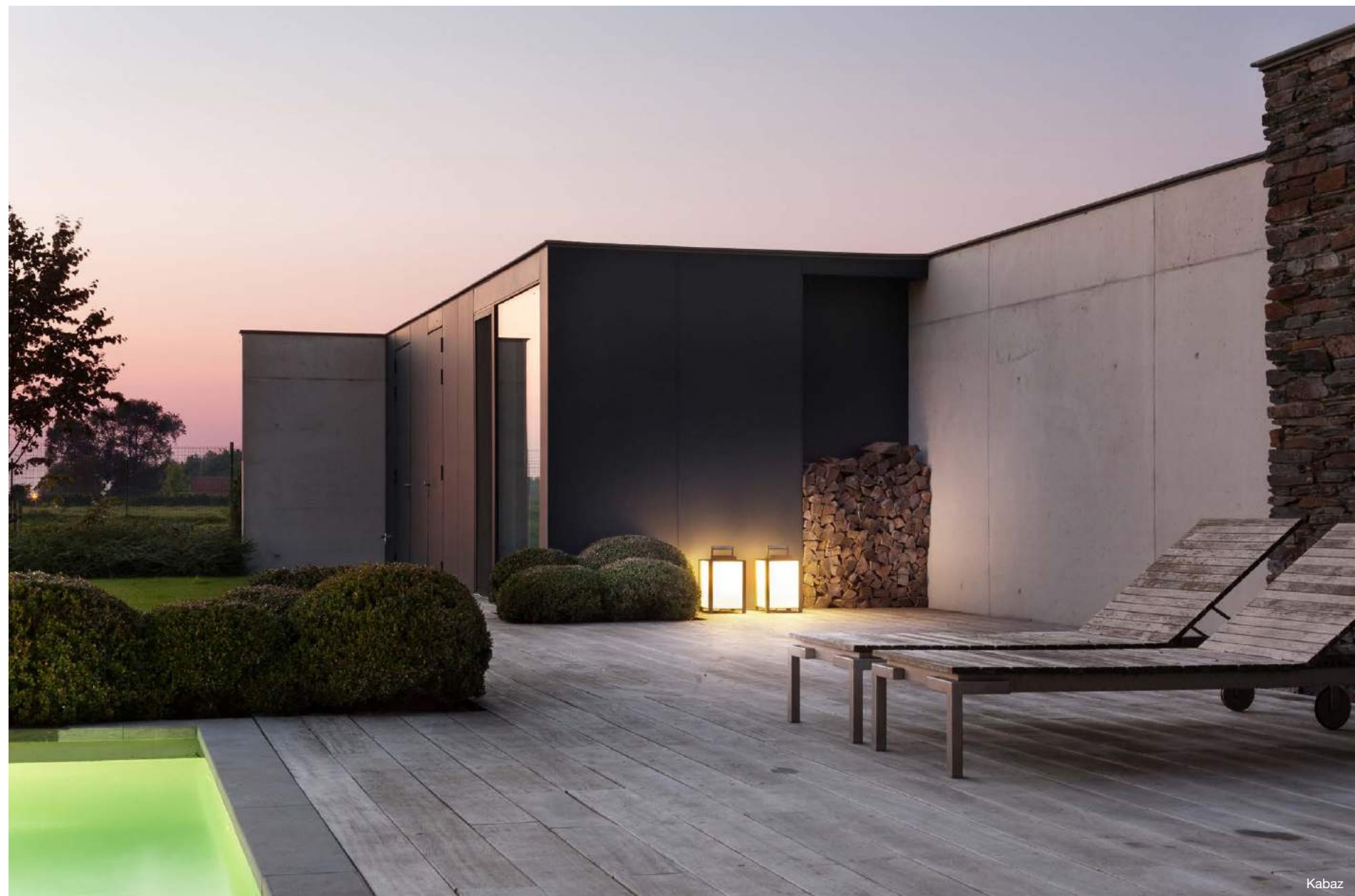
Duell



George



Portfolio 0.1



Kabaz



Kabaz



Lowieze



Julien square



Fall LED



Gutter LED



George



Julien round



Nude exterior



Portfolio 0.2



Hipy 67

# 🔑 MORE INSPIRATION?

MEET MODULAR.

## MODULAR LIGHTING INSTRUMENTS – HEADQUARTERS

(for general information and sales network addresses in other countries)  
Armoedestraat 71 | 8800 Roeselare | Belgium  
Tel: +32 (0) 51 26 56 56 | Fax: +32 (0) 51 22 80 04  
welcome@supermodular.com | www.supermodular.com

## Australia & New Zealand

22-38 Yurong Street | Darlinghurst NSW 2010 | Australia  
Tel: +61 2 9571 8800 | Fax: +61 2 9571 88 11  
welcome@modularlighting.com.au | www.supermodular.com

## Belgium

Armoedestraat 71 | 8800 Roeselare  
Tel: +32 (0) 51 26 56 56 | Fax: +32 (0) 51 22 80 04  
welcome@supermodular.com | www.supermodular.com

Concept Gallery | Riemstraat 32 | 2000 Antwerpen

Tel: +32 (0) 3 298 40 14 | info@conceptgallery.be | www.conceptgallery.be

## China

Suite 7302, Bridge 8, No. 10 Middle JIanguo Road | Shanghai  
Tel: +86 21 6466 8828 | Fax: +86 21 6466 6896  
gc.modular@philips.com | www.supermodular.com

## Denmark

Klubbiensvej 22, Pakhus 48 | 2150 Nordhavnen | Copenhagen  
Tel: +45 3613 2100 | Fax: +45 3613 2101  
welcome.denmark@supermodular.com | www.supermodular.com

## France

31, Rue du Mail | 75002 Paris  
Tel: +33 1 45 42 24 25 | Fax: +33 1 45 42 43 20  
bonjour@supermodular.com | www.supermodular.com

## Germany

Tel: +32 (0) 51 26 56 56 | Fax: +32 (0) 51 22 80 04  
welcome.germany@supermodular.com | www.supermodular.com

## Iberia & Latin - South America

Tel: +34 617 304905 | Tel: +32 (0) 51 26 56 56  
welcome.iberia@supermodular.com | www.supermodular.com

## India

9th Floor, DLF-9B, DLF Cyber City | DLF Phase 3, Gurgaon 122002  
Tel: +91 124 4606560 | papiya.bose@philips.com

## Italy

Via E.T. Moneta 40 | 20161 Milano  
Tel: +39 02 662421 | Fax: +39 02 66203400  
welcome.italy@supermodular.com | www.supermodular.com

## Japan

5-9-3 Minami azuku, Minato-ku | Tokyo 106-0031  
Tel: +81-3-5775-2511 | Fax: +81-3-5775-2512  
welcome@modularjp.com | www.supermodular.com

## Luxembourg

5, Rue de l'Église | 1458 Luxembourg/Hollerich  
Tel: +352 621 438 899 | Tel: +32 (0) 51 26 56 56  
welcome@supermodular.com | www.supermodular.com

## The Netherlands

Bouwerij 54 | 1185 XX Amstelveen  
Tel: +31 (0) 20 347 30 47 | Fax: +31 (0) 20 347 30 48  
info@modular.nl | www.modular.nl

## Norway

Eidsvågbakken 1 | 5105 Eidsvåg (Bergen)  
Tel: +47 92 21 92 20  
Nedregt 7 | 00551 Oslo  
Tel: +47 928 14 481  
welcome.norway@supermodular.com | www.supermodular.com

## Russia

Tel: +7 919 991 57 54 | Tel: +32 (0) 51 26 56 56  
welcome.russia@supermodular.com | www.supermodular.com

## Sweden

Studio B3 – Barnhusgatan 3 | 111 23 Stockholm  
Tel: +46 8 523 29 800  
welcome.sweden@supermodular.com | www.supermodular.com

## Switzerland

Aargauerstrasse 250 | 8048 Zürich  
Tel: +41 44 456 44 00 | Fax: +41 44 456 44 09  
welcome.switzerland@supermodular.com | www.modular-lighting.ch

## The Netherlands

Bouwerij 54 | 1185 XX Amstelveen  
Tel: +31 (0) 20 347 30 47 | Fax: +31 (0) 20 347 30 48  
info@modular.nl | www.modular.nl

## United Kingdom

28, Leonard street | 2C2A4BY London  
Tel: +44 (0) 20 7681 99 33 | Fax: +44 (0) 20 7681 99 43  
sales@atrium.ltd.uk | www.modular-lighting.co.uk

## USA & Canada

14 Wooster street | NY 10012 New York  
Tel: +1 212 966 1399 | Fax: +1 212 966 1799  
infous@luceplan.com | www.supermodular.com

