

# INFRARED THERMOGRAPHY

L | H | W  
P A R T N E R S H I P

R E N E W A B L E E N E R G Y & E N E R G Y E F F I C I E N C Y E N G I N E E R S

LHW Partnership LLP | The Annex, PO Box 6430, Leighton Buzzard, LU7 6FE | 020 3290 5497 | www.lhwp.co.uk | enquiries@lhwpartnership.co.uk

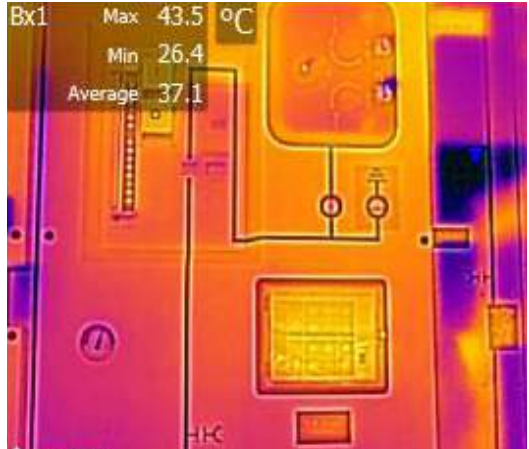
## THERMOGRAPHY

### INFRARED THERMOGRAPHY IMAGING FOR DIAGNOSTICS

Infrared Thermography or Thermal Imaging is used in a wide range of applications as a diagnostic tool and recent years has seen its use within commercial and industrial applications grow dramatically.

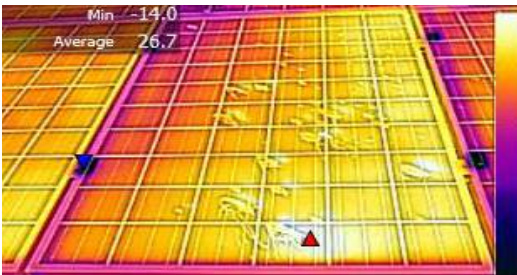
All objects at a temperature above absolute zero emit infrared radiation and the amount of radiation emitted increases as temperature increases. Infrared Thermographic cameras detect infrared radiation allowing warmer objects to stand out against cooler objects.

Staff members at LHW Partnership LLP are Level 1 and Level 2 qualified Thermographers, certified by the Infrared Training Centre.



## THERMOGRAPHY & PV

### THERMOGRAPHY USED TO ASSESS HEALTH OF PV SYSTEMS



Thermography can be an invaluable tool in assessing the health of a solar PV system and can identify possible points of failure long before any visual markers are seen. PV systems are designed to generate for a minimum of 25 years and in most cases provide financial returns. It is therefore important to ensure that each component of the system is working efficiently and any failure risks are minimised. Thermography identifies poor electrical connections, damaged cells, damaged glass, defective bypass diodes and shadowing; all of which can have an effect on the operation of a solar PV system.

## SERVICES

### LHW PARTNERSHIP LLP OFFERS THE FOLLOWING SERVICES ASSOCIATED WITH THERMOGRAPHY

- + Renewable Energy System Inspections
- + Building Heat Loss Inspection
- + DC Cable Connectors Inspection
- + AC Cable Inspection
- + Complete Electrical Inspection
- + Unmanned Aerial Vehicle IR Inspection
- + Technical Report
- + Recommendations for Remedial Works

