

ENERGY PERFORMANCE & DATA MONITORING



RENEWABLE ENERGY & ENERGY EFFICIENCY ENGINEERS

LHW Partnership LLP | The Annex, PO Box 6430, Leighton Buzzard, LU7 6FE | 020 3290 5497 | www.lhwp.co.uk | enquiries@lhwppartnership.co.uk

DATA LOGGING

LOGGING OF DEMAND AND GENERATION

Logging of a property's power consumption is an important tool in understanding the profile of a property, particularly when considering the adoption of a distributed generation system or an energy storage system.

Not only does power consumption logging provides actionable power consumption and energy performance data, it can also provide information on energy use patterns on a minute by minute basis.

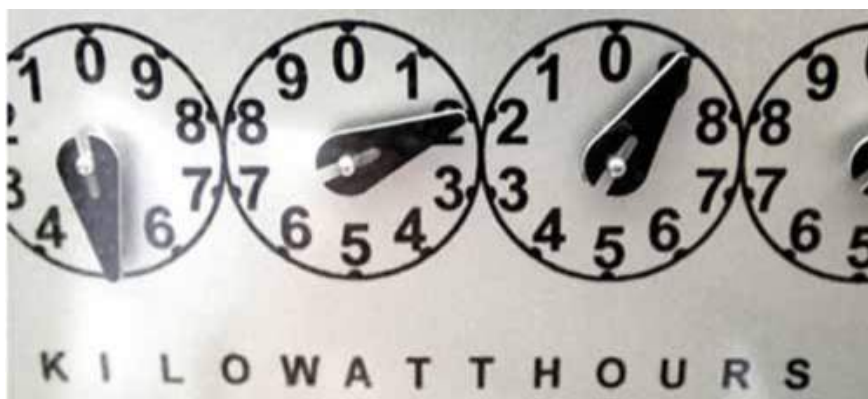


ANALYSIS AND APPLICATION

ANALYSING TO DATA TO OPTIMISE SYSTEM DESIGN

We are qualified energy engineers and can provide expert data analysis services specifically for the adoption of generation. Obtaining energy demand profiles down to 1 minute intervals (compared to the hourly profiles typically used) allows for a more granular assessment of the viability of an energy solution. This is particularly important when looking at the technical and financial viability of a generation or energy storage system.

Energy analysis conducted on hourly time intervals has been shown to over estimate the benefits, which can ultimately reduce the effectiveness and return on investment of a given system.



SERVICES

LHW PARTNERSHIP OFFERS THE FOLLOWING SERVICES:

- + Power Consumption Data Logging
- + Generation Data Logging
- + Data Analysis
- + Energy Efficiency Recommendations
- + Demand v Generation Modelling
- + Demand v Energy Storage Modelling
- + Technical Appraisals
- + Financial Appraisals

