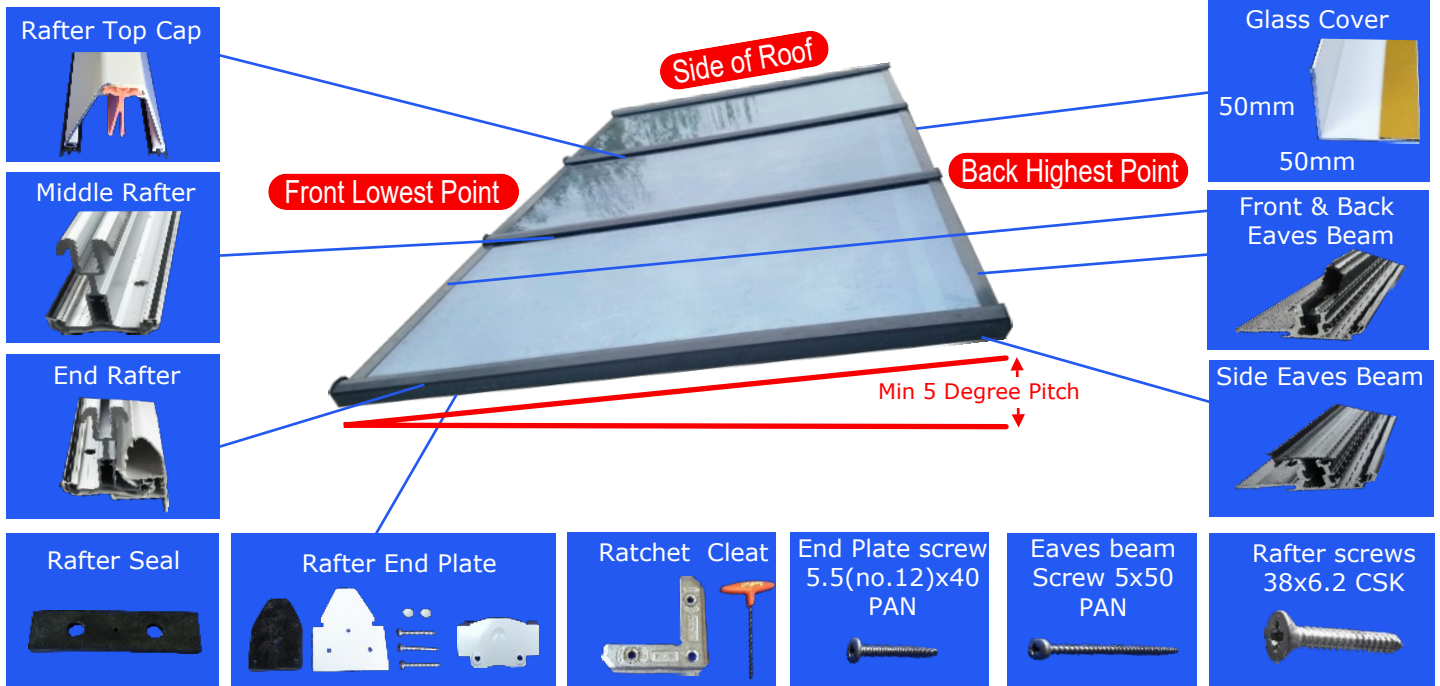


Part Identification



IMPORTANT NOTE

FALL

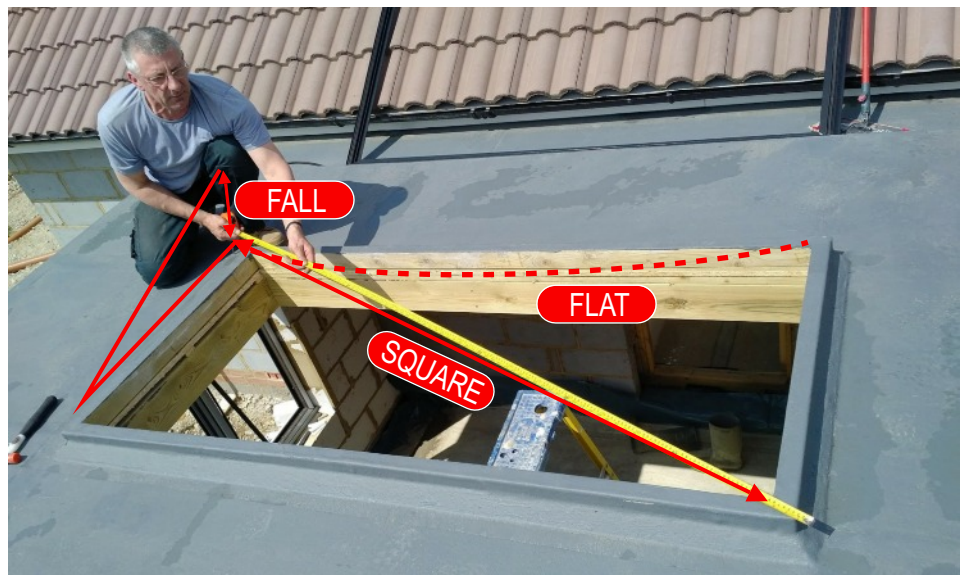
Uprand must have a minimum of a 5 degree fall from front to back. DO NOT PROCEED IF NOT. A five degree slope is approximately 100mm of fall for every 1m of depth.

SQUARE

Check diagonals to make sure opening is square.

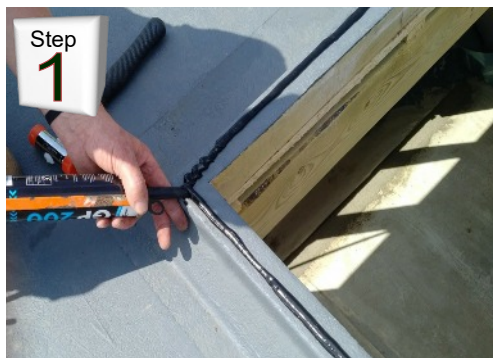
FLAT

Check upstand is flat. Eaves beam must not bow when screwed down.



Before you start installation check the opening is correct.

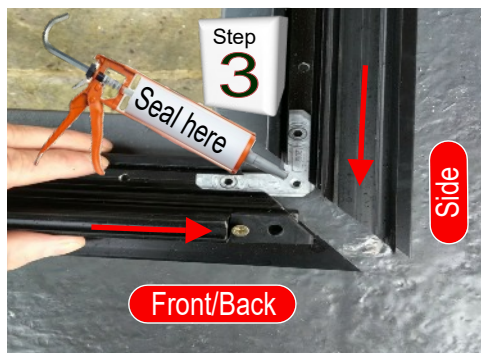
Follow These Fitting Steps



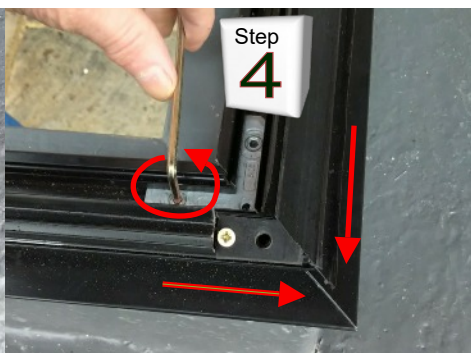
Lay down an even bed of silicone on the prepared upstand.



Locate the eaves beams, these fit to your prepared upstand. The side eaves beam has a different gasket than the front/back eaves.



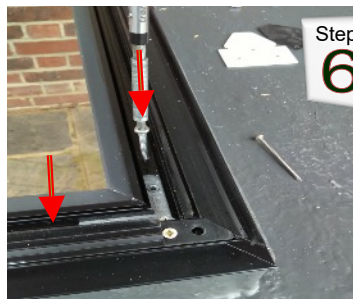
Use ratchet cleats to join eaves beam mitres. Seal mitres first.



Using the 4mm allen key provided tighten mitre joints.

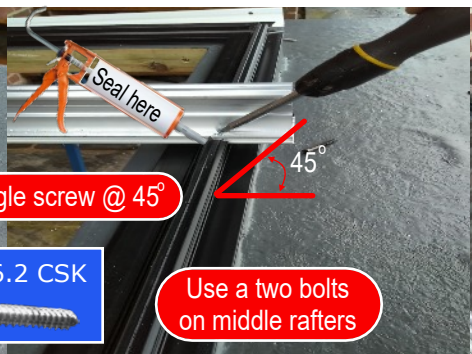
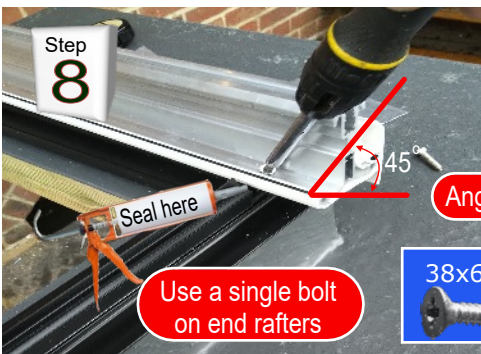


Before screwing eaves beam down to your upstand, pack so level. Eaves beam must be level, do **NOT** bow when fixing



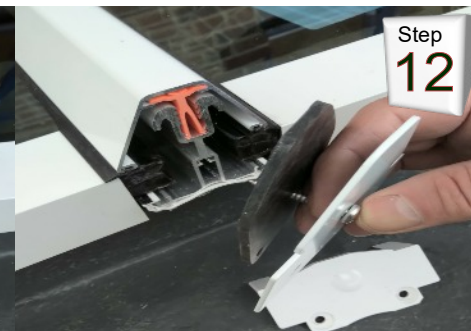
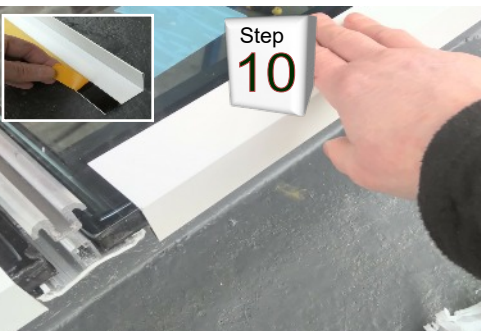
Drill a 5mm pilot hole at fixing point. Fix either side of mitre cleat and behind each middle rafter point.

Clip internal screw cover trim to eaves beam to cover screw channel.



Screw rafters to eaves beam. Position screws at a 45 degree angle to locate into eaves beam (as shown).

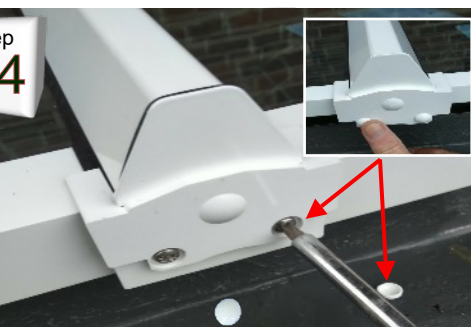
Glaze roof. Check glass is facing correct side up (see label).



Peel back tape, position trim equally between rafters, tape side to glass.

Clip down top caps all the way to bottom notch.

Fix aluminium end plate with rubber gasket.



Only use middle hole (as shown).

Fit plastic cover plate on to the aluminium end plate using two screws to the lower holes. Fit screw cover caps.