

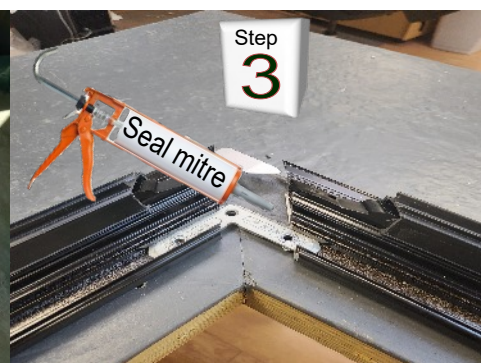
## Part Identification



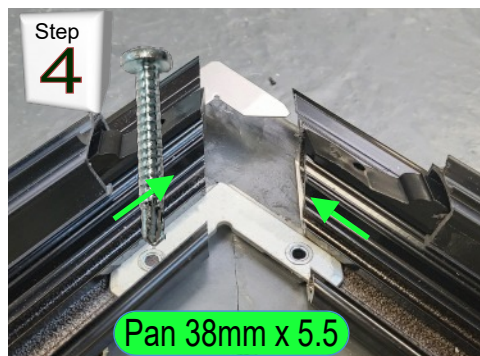
Check opening is square and level.



Seal top of up-stand before fitting eaves beam.



Join eaves beam at corners



Fix corner connectors with 38mm self drilling screws



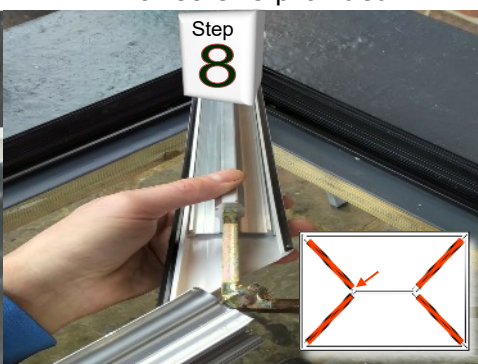
Fix eaves beam to your upstand with screws provided



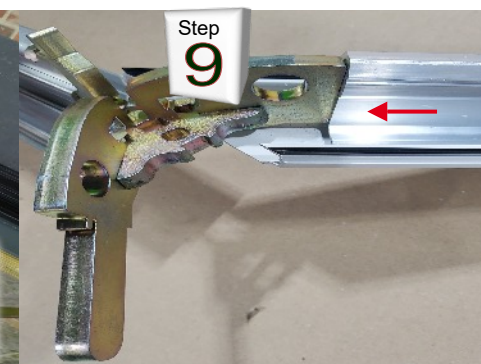
Clip on internal screw cover trim.



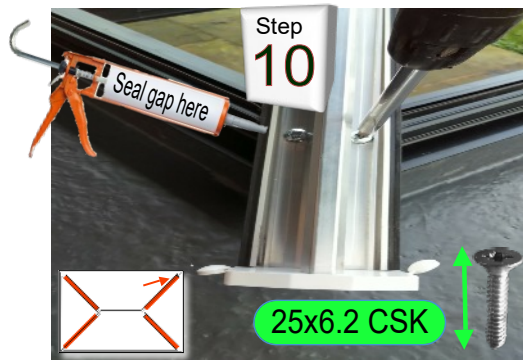
Fix glass retainers on ends of the rafters



Slide hip rafters on to the ridge spider



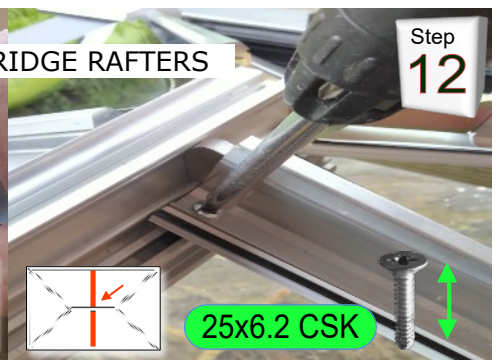
Make sure hip is fully located



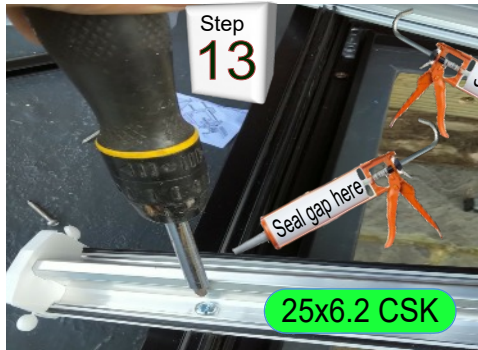
Seal under hip then screw hip to eaves with two 25x6.2



Ridge rafters hook on to the ridge



Secure to ridge with 25x6.2 screws



Secure rafter into eaves beam with two 25x6.2 screws



Seal any gaps where the glass infill meets rafters



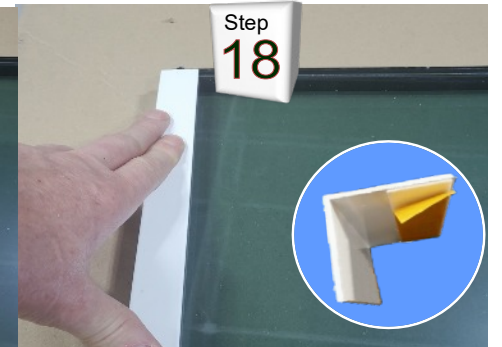
Note - if using silicone near glass ONLY use neutral cure



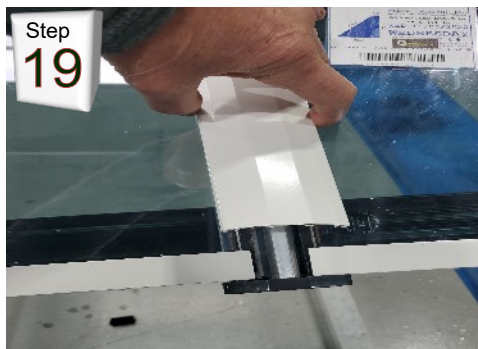
Push draught seal between glass and rafter



Peel off backing on glass closer tape



Position equally on bottom of glass panels and stick down.



Clip down all the rafter top caps on the roof



\*If there are rafters from ridge. Fit top caps



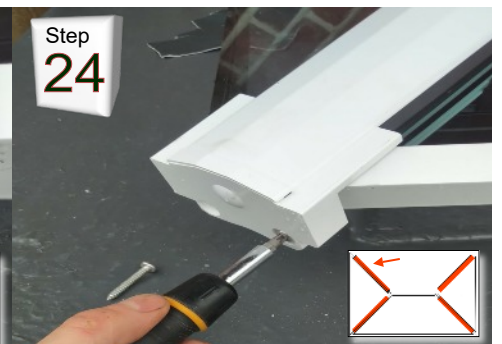
Clip on Ridge top cap



Clip on Ridge end cap



Screw on rafter plates



Screw on hip face plates