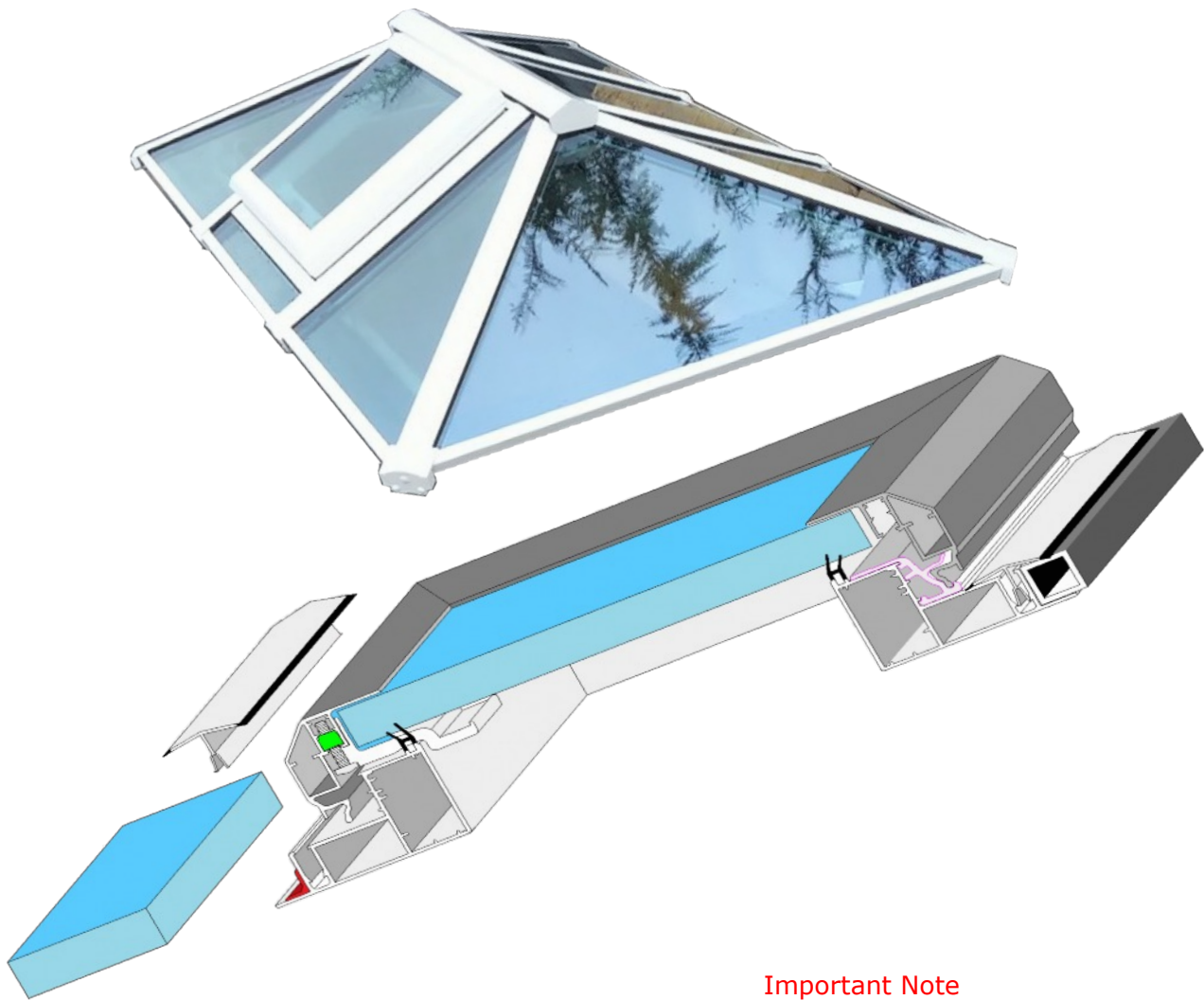


## Maxi-Vent

### Lantern Roof Vent



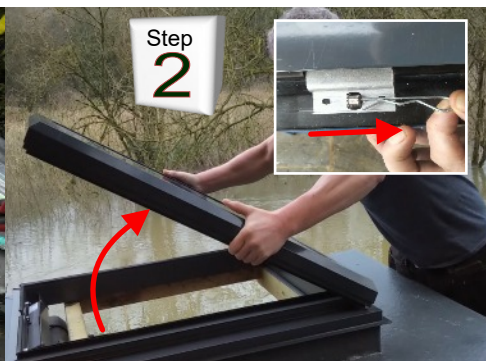
#### Important Note

If using silicone near glass units ONLY use neutral cure silicone.

Follow These Fitting Steps



Carefully unpack vent



Disengage the opening catch from the vent lid. Open lid to 45 degree then lid will come away from the vent frame



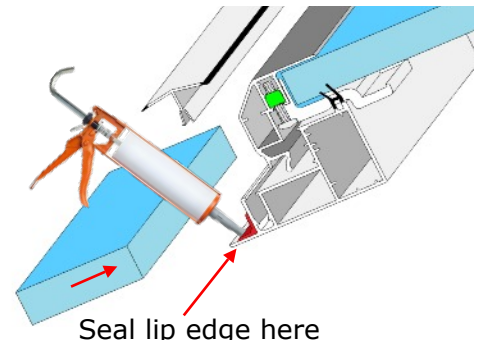




With the lid removed fit the vent into roof opening



Before glazing the lower panel lay a bed of neutral cure sealant



Seal lip edge here



Glaze lower panel making sure there is a good seal to vent



Clip cover bead into channel



Beads under rafter cap

When roof top caps go on make sure beads fit under caps

## Glaze the vent lid



Remove motor arm from lid prior to glazing



Peel off the protective paper on glazing seals



Glaze glass unit up the correct way, see glass label



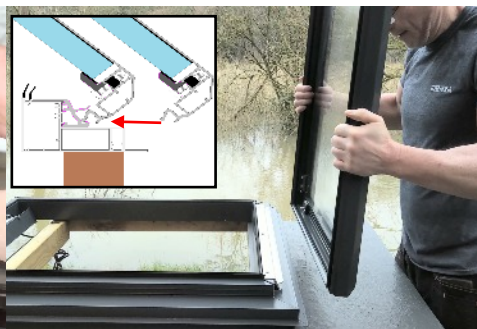
Pack glass unit evenly with glazing packers



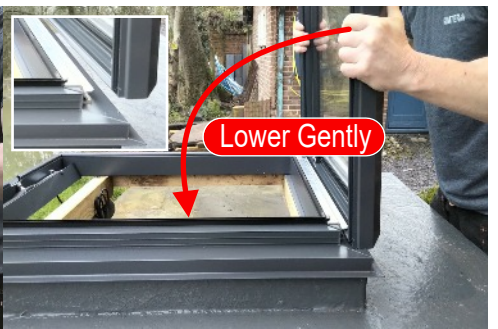
Screw motor arm back onto lid



Clamp glass with clamp blocks, these fit to travellers in frame



Fit lid to vent frame by locating into hinge bar when upright



GENTLY lower lid, STOP if you feel resistance, relocate and attempting again