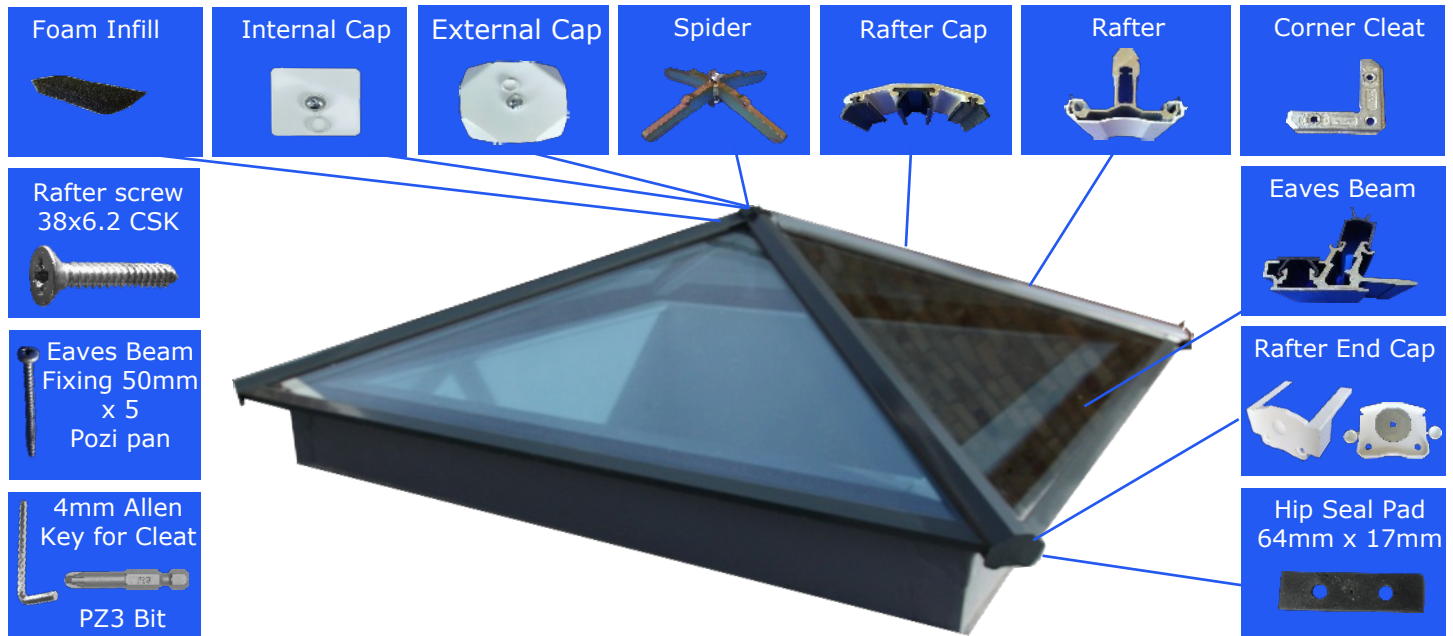


Maxi Pyramid Lantern

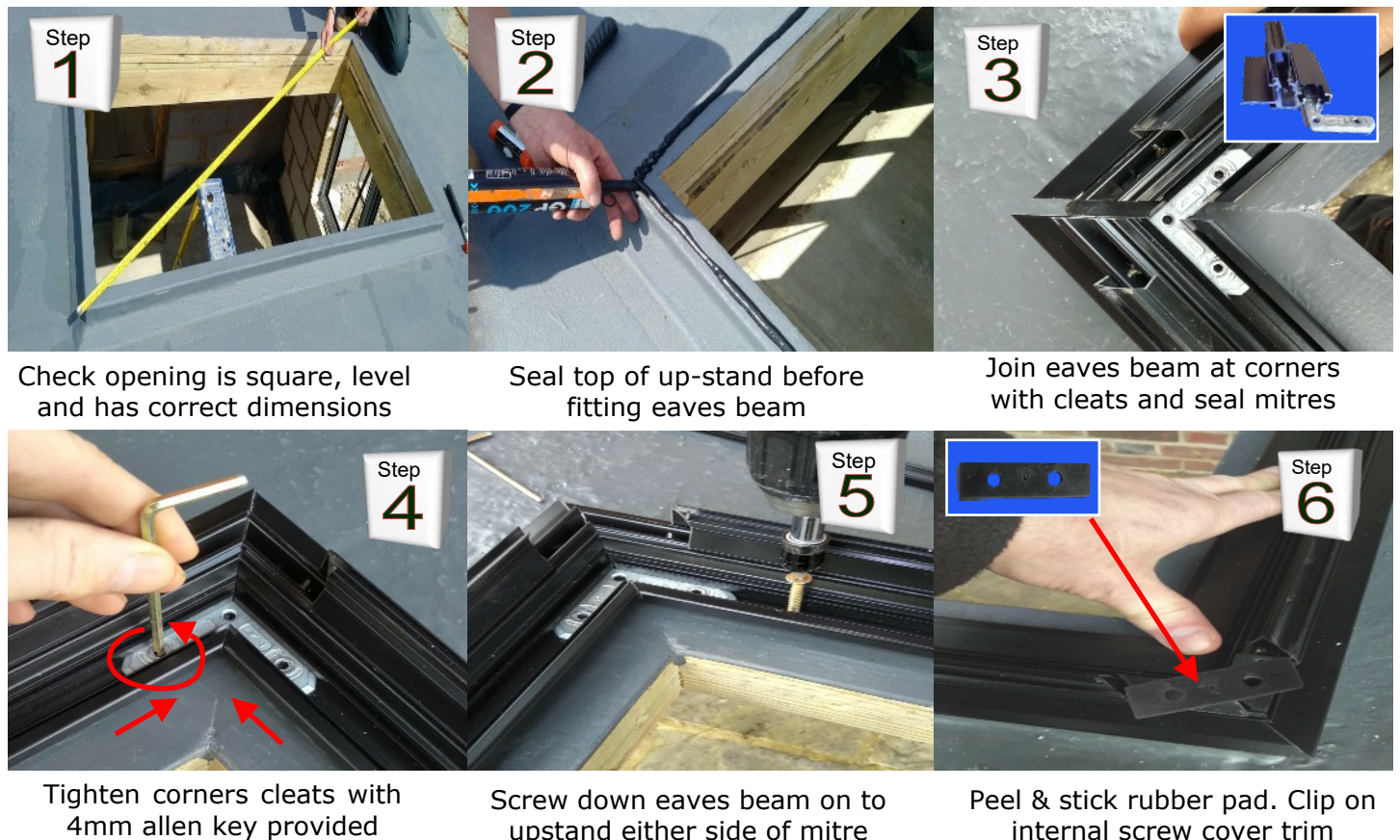
Part Identification

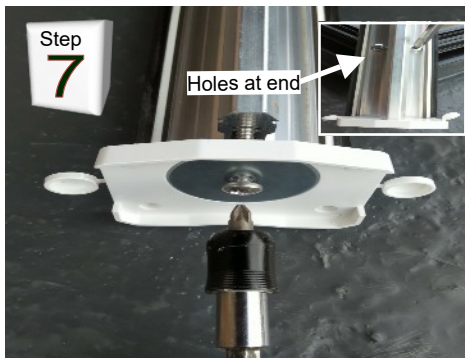


Important Note

If using silicone near glass units ONLY use neutral cure silicone.

Follow These Fitting Steps





Screw glass retainer plates on to rafter ends



Push rafters on to spider. Long cap under facing long cap



Lower all the rafters on to eaves beam



Seal then secure rafter into eaves beam with 38x6.2 screws



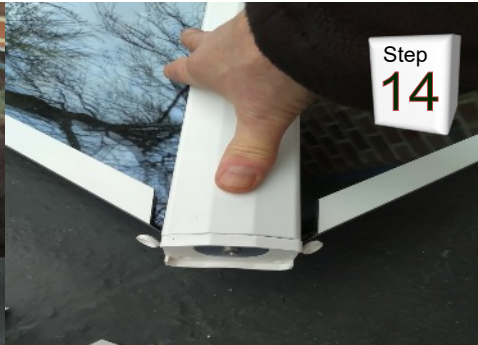
Fit glass units facing correct way (see glass label)



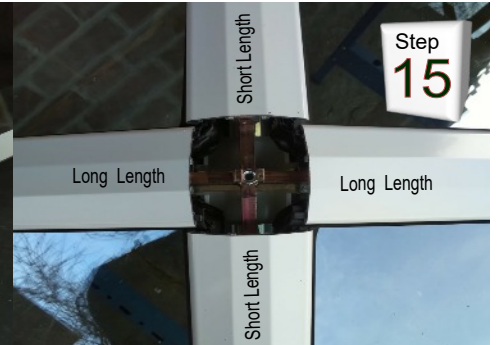
Push draft foam at the top of each rafter



Peel off glass closer backing and position between rafters



Fit top caps
THEY ARE DIFFERENT SIZES !



Fit long cap to long cap - short cap to short cap



Seal around top before fitting cap plate



Screw down top cap plate



Fix rafter face plates



Screw and clip on screw covers



Make sure nut is in radius end before fitting cover plate



Finally screw on internal cover plate