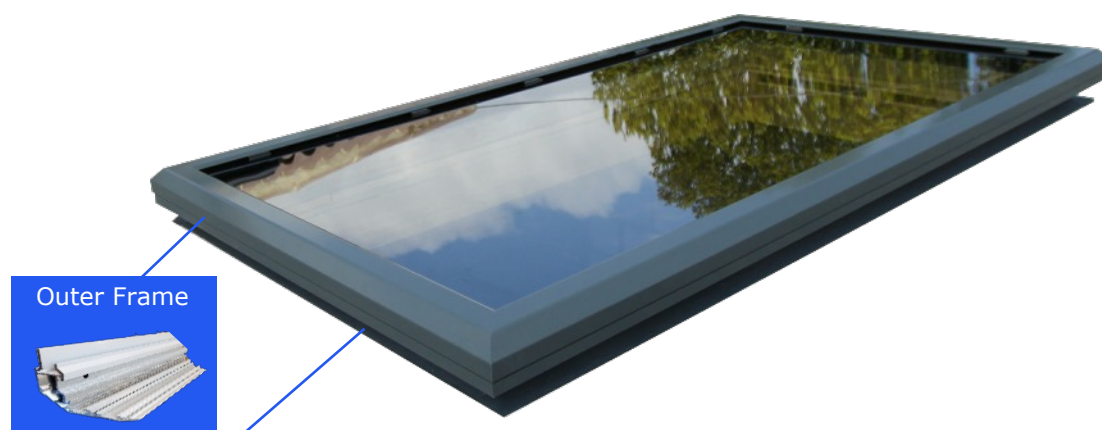


## Part Identification



## Follow These Fitting Steps



Check opening is square, flat and has the correct fall.



Seal eaves beam on upstand with a bead of sealant.



Join eaves mitre with cleat and chevron. Seal mitre joint.



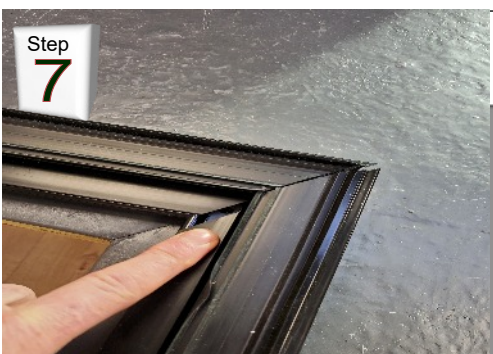
Tighten cleats with 4mm allen key provided.



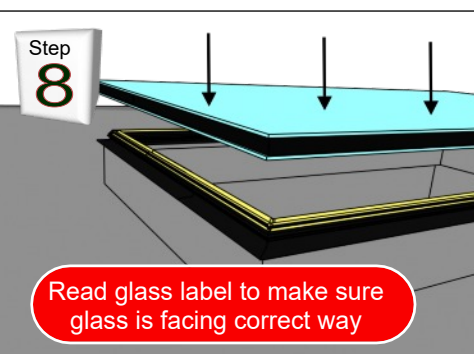
Fix eaves beam to upstand making sure not to open mitres.



Eaves beam **MUST NOT** bow, pack level if required.



Clip in the screw channel covers.

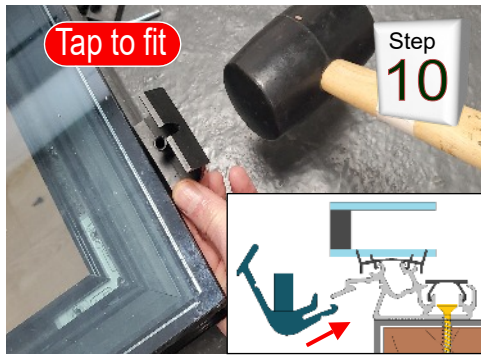


Lay glass on to eaves beam. Make sure glass is facing correct way up.



Line up glass using eaves beam edge as a guide.

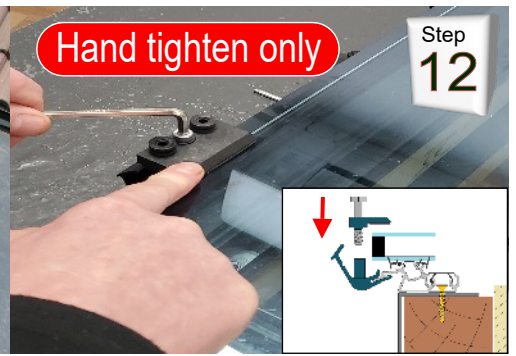




Tap glass locks on to eaves beam, ideally with a rubber mallet.



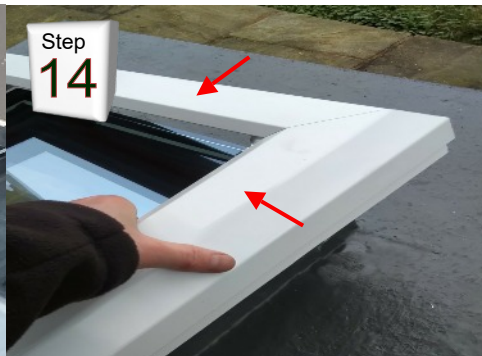
Space your glass locks evenly around the frame.



Tighten clamp until top pad touches glass then turn one more complete turn to secure. Do not over tighten.



Insert x2 rubber plugs, one either side of the bolt as shown.



Offer outer frame to glass and evenly space.



Clip frame down with a firm push downward.

**To remove outer frame.** The outer frame can be removed in a few simply steps. Contact your agent to obtain a frame removal guide.

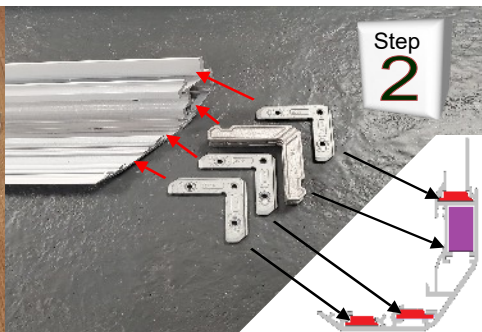
## Flat Pack Outer Frame Assembly Only

This is only if you have had the outer frame delivered as a flat pack and not pre-assembled.

## Flat Pack Guide



Unpack outer frame and locate two shortest lengths.



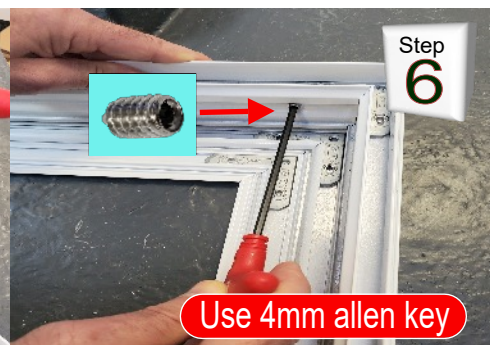
Insert 3x ratchet cleats and 1x block cleat in the 2 shortest lengths.



Join the frames on a flat surface.



Tighten each ratchet cleat in order shown, 1 & 2 being first.



Once mitres are tight, lock in place with grub screw shown.