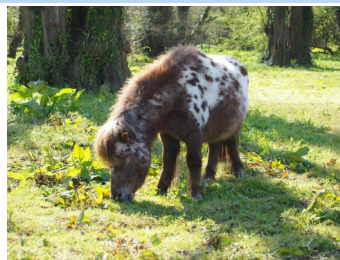


HORSE WEIGHTS 1

It is important that we weigh the horses and ponies often.
Maybe you can help us keep an eye on their weight by
completing the activities below.



CHARLIE: 478 KG



FUDGE: 147 KG



GEORGE: 432 KG



WILLIAM: 396 KG

1. Can you put the horses weight in order from **LIGHTEST** to **HEAVIEST**?



TAKE A LOOK AT CHARLIE'S WEIGHT OVER 6 MONTHS...

NOVEMBER	DECEMBER	JANUARY	FEBRUARY	MARCH	APRIL
504 KG	490 KG	470 KG	458 KG	464 KG	478 KG

1. WHICH MONTH WAS HIS WEIGHT THE HIGHEST?
2. WHICH MONTH WAS HIS WEIGHT THE LOWEST?

3. CHARLIE WEIGHED MORE IN MARCH THAN IN FEBRUARY. HOW MANY MORE KG'S DID HE WEIGH?

HORSE HEIGHTS

It is handy to know how tall the horses and ponies are and we can find out if they are classed as horses or ponies. They are measures in “Hands” and it is written as “hh” which stands for ‘hands high’. Ponies measure less than 14.2hh and horses measure more than 12.4 hh

1. Have a go at typing or writing :

- A. 8 hands
- B. 10 hands
- C. 12.2 hands



RHEIA: 15.1 hh



DAISY: 12.2 hh



CINDY: 8.1hh



WILLIAM: 13.3hh

**2. WHO IS
A HORSE?**

**3. WHO IS
A PONY?**

4. Can you put the horses height in order from SMALLEST to BIGGEST?



HORSE WEIGHTS 2

It is important to notice changes in horses weight as we might need to feed them extra or cut their feeds down. Sometimes the changes can be big and sometimes small. Complete the activities below to help us notice any monitor any changes,

1. Bertie lost weight between March and April.

How much did he lose?



Bertie's weights:

20th March

339 KG

3rd April

334 KG

2.

Did Blue lose weight? Or Put on weight?



Blue's Weights

20th March

414 KG

3rd April

426 KG

3. Daisy

Put on weight between March and April.

How much did she put on?



Daisy's Weights

20th March

323 KG

3rd April

328 KG

4. Who weighed the most in March?

5. Who weighed the most in April?

6. Bertie weighs a bit more than Daisy in March and April. How much more did he weigh in April?

COUNTING & ADDING

When we check the horses and ponies we need to make sure they're all there and none of them are missing. Can you help us check the horses are where they are supposed to be by completing the activities below

1. How many horses can you count in this picture?

2. How many tails can you count in the picture?



4. Each of these horses have 2 ears. How many ears in total?

3. Each horse has a mane (1). How many manes in total?

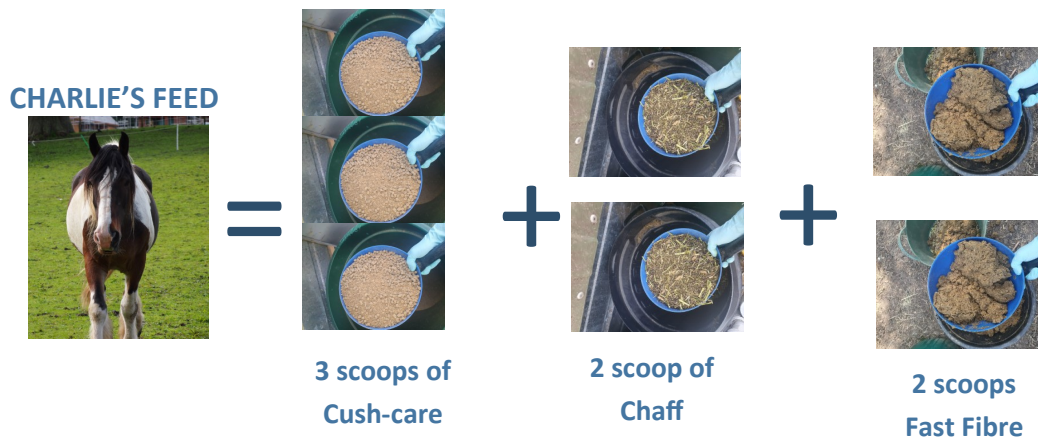


5. How many horses can you count in this picture?

6. All of the horses have 2 eyes. How many eyes in total?

ADDING

We have to monitor what the horses eat and sometimes they need extra feed. Have a look at the activities below to learn about how much they have in their feed, note: the amount changes depending on their weight...



Cush-care + Chaff

$$3 + 2 =$$

Chaff + Fast Fibre

$$2 + 2 =$$

Fast Fibre + Cush-care

$$2 + 3 =$$

How many scoops in total for one feed?

$$3 + 2 + 2 =$$

How many Cush-Care in total?

$$3 + 3 =$$

When Charlie was weighed again he lost weight which means he needs more feed.

We gave him 3 extra Cush-Care and 3 extra Fast Fibre.

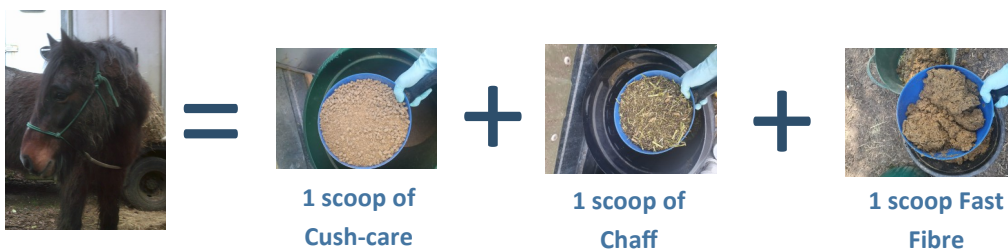
How many Fast Fibre in total?

$$2 + 2 =$$

BASIC MULTIPLICATION & SUBTRACTION

Horse feeds continued.....

BERTIE'S FEED



1. HOW MANY
SCOOPS IN
TOTAL FOR
ONE FEED?

$$1 \times 3 =$$

2. SOMETIMES BERTIE
NEEDS 2 FEEDS A DAY.
HOW MANY SCOOPS OF
CHAFF WOULD THIS BE?

$$2 \times 1 =$$

3. HOW MANY
SCOOPS IN
TOTAL FOR 2
FEEDS?

$$2 \times 3 =$$

Last year during spring/early summer, Bertie put on a bit of weight so we cut his feed down. Can you work out how many scoops were left in May and June?

May– We stopped giving him chaff. Can you work out how many scoops in total after we cut out chaff?

The diagram shows three scoops of Cush-care and Fast Fibre (two scoops of Cush-care and one of Fast Fibre) followed by a minus sign, then one scoop of Chaff, followed by an equals sign.

$$3 - 1 =$$

June– We stopped giving him Cush Care too. Can you work out how many scoops in total after we cut out Cushcare and Chaff?

The diagram shows three scoops of Cush-care and Fast Fibre (two scoops of Cush-care and one of Fast Fibre) followed by a minus sign, then two scoops of Cush-care and Chaff (one of each), followed by an equals sign.

$$3 - 2 =$$