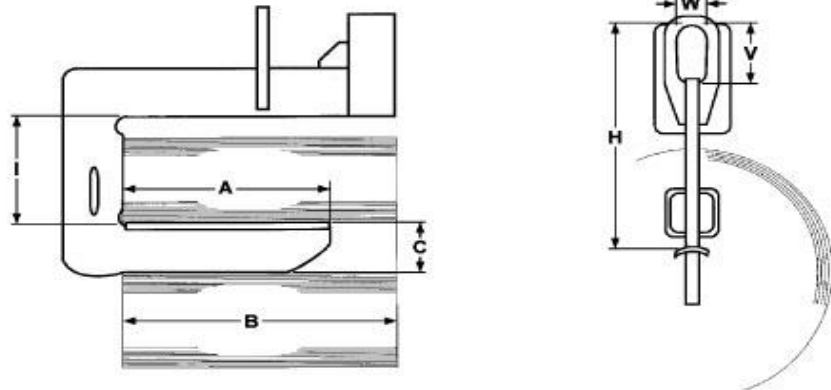




TC Engineering GmbH
 Gartenstrasse 12
 91626 Schopfloch
 Germany

COIL HOOKS

C30 coil hooks with counterweight balance



| Load Capacity SWL in t | Type Part # | Dimensions (mm) | | | | | | Weight kg |
|---------------------------|----------------|-----------------|------|-----|------|------|-----------|--------------|
| | | B | A | C | I | H | V x W | |
| 7,5 | C30.075.007 | 375 - 750 | 565 | 200 | 550 | 830 | 230 x 110 | 220 |
| 7,5 | C30.075.010 | 500 - 1000 | 750 | 230 | 550 | 830 | 230 x 110 | 290 |
| 7,5 | C30.075.012 | 625 - 1250 | 940 | 230 | 550 | 830 | 230 x 110 | 400 |
| 7,5 | C30.075.015 | 750 - 1500 | 1125 | 250 | 550 | 830 | 230 x 110 | 490 |
| 10 | C30.100.007 | 375 - 750 | 565 | 230 | 600 | 910 | 250 x 120 | 270 |
| 10 | C30.100.010 | 500 - 1000 | 750 | 230 | 600 | 910 | 250 x 120 | 400 |
| 10 | C30.100.012 | 625 - 1250 | 940 | 270 | 650 | 960 | 250 x 120 | 500 |
| 10 | C30.100.015 | 750 - 1500 | 1125 | 290 | 650 | 960 | 250 x 120 | 680 |
| 15 | C30.150.010 | 500 - 1000 | 750 | 290 | 750 | 1120 | 300 x 135 | 600 |
| 15 | C30.150.012 | 625 - 1250 | 940 | 290 | 750 | 1120 | 300 x 135 | 780 |
| 15 | C30.150.015 | 750 - 1500 | 1125 | 320 | 700 | 1070 | 300 x 135 | 1000 |
| 15 | C30.150.020 | 1000 - 2000 | 1500 | 350 | 700 | 1070 | 300 x 135 | 1500 |
| 20 | C30.200.010 | 500 - 1000 | 750 | 300 | 850 | 1310 | 380 x 180 | 850 |
| 20 | C30.200.012 | 625 - 1250 | 940 | 320 | 850 | 1310 | 380 x 180 | 1000 |
| 20 | C30.200.015 | 750 - 1500 | 1125 | 330 | 800 | 1260 | 380 x 180 | 1250 |
| 20 | C30.200.020 | 1000 - 2000 | 1500 | 370 | 800 | 1260 | 380 x 180 | 1700 |
| 25 | C30.250.012 | 625 - 1250 | 940 | 360 | 850 | 1400 | 450 x 210 | 1200 |
| 25 | C30.250.015 | 750 - 1500 | 1125 | 360 | 850 | 1400 | 450 x 210 | 1500 |
| 25 | C30.250.020 | 1000 - 2000 | 1500 | 400 | 850 | 1400 | 450 x 210 | 2000 |
| 30 | C30.300.015 | 750 - 1500 | 1125 | 380 | 950 | 1550 | 500 x 220 | 1900 |
| 30 | C30.300.017 | 875 - 1750 | 1320 | 400 | 950 | 1550 | 500 x 220 | 2100 |
| 30 | C30.300.020 | 1000 - 2000 | 1500 | 420 | 950 | 1550 | 500 x 220 | 2450 |
| 40 | C30.400.015 | 750 - 1500 | 1125 | 420 | 1100 | 1800 | 550 x 250 | 2300 |
| 40 | C30.400.020 | 1000 - 2000 | 1500 | 460 | 1100 | 1800 | 550 x 250 | 2450 |