

Ohio Medical's Push-To-Set™ Intermittent and Continuous Vacuum Regulators (ISO & ANSI)



Ohio Medical Corporation's Push-To-Set™ (PTS) family of vacuum regulators come with our durable, time tested, quality design you have come to know.

Clear markings
show what mode the unit is in

Top mounted on/off switch
for ease of use

Stat Set-Up
Intermittent mode starts in the "ON" cycle - No waiting

Glow-in-the dark gauge
provide visibility in low-light situations

Smaller, sleek design
for tight spaces

Moderate Flow Rates

- safer for normal suctioning
- high for resuscitation

Quietest
on the market

Patented Push-To-Set™
Built-in feature eliminates the need to occlude patient tubing to set accurate vacuum levels

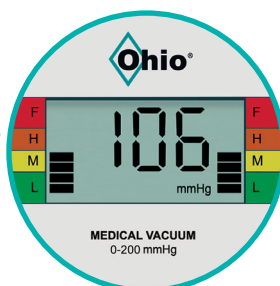
Fully adjustable timing cycles
preset to 15 seconds On / 8 seconds OFF

Quick-To-Max
Only 2 turns from 0 to full wall vacuum

Also available with a Digital Gauge
Large, easy to read display

Tough, Reliable

- survives dropping
- holds calibration



Digital Accuracy for patient safety
+/- 1% of full scale

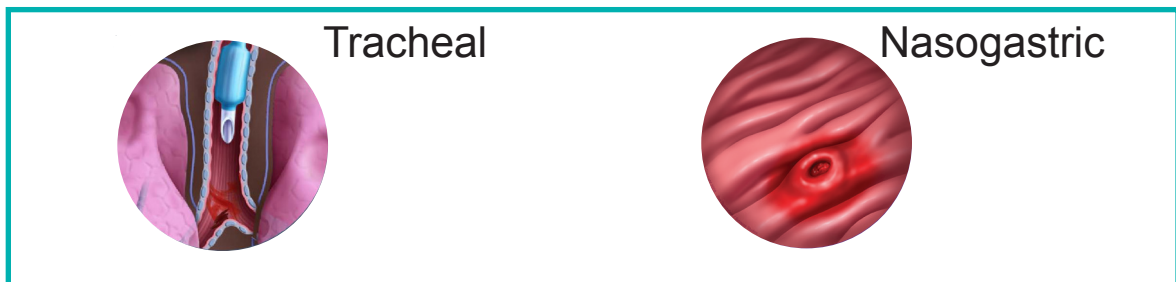
Did You Know?

Higher than recommended suction levels are frequently set for most common suctioning procedures.

Fact: If occlude-to-set is not performed, over-suctioning may occur*

Fact: Higher than recommended suction levels may lead to tissue damage/bleeding*

Fact: Tissue tears may lead to infection*



Why PTS dramatically improves setting clinical vacuum settings

Patented Push-To-Set™ built-in feature eliminates the need to occlude patient tubing to set accurate vacuum levels



Removes a step in setting vacuum level, while ensuring greater patient safety

One simple one-handed step

*Reference Neonatal Intensive Care, May-June 2008 Issue, Article: Enhancing the Safety of Medical Suction Through Innovative Technology, by Patricia Carroll, RN, BC, CEN, RRT, MS

Push-To-Set™ Adult Intermittent Suction Regulators (ISU) (Analog or Digital)



8700-1253-900
Counterclockwise gauge
Adult
(ISO)



8700-1251-900
Clockwise gauge
Adult
(ANSI)



8700-1351-900 (ANSI)
8700-6353-900 (ISO)
Adult

Technical Specifications

Safety Feature:	Push-To-Set™ Automatic occlusion device Quick-To-Max (2 turns to full wall vacuum) One hand to set vacuum level
Flow Rate:	Intermittent: Preset at 8 L/min per ASTM* Continuous: 0 to 80 L/min (without fittings at full increase)
Timing:	Easily adjustable without cover or gauge removal Silent ON/OFF switching Preset 15 seconds ON / 8 seconds OFF (range: ± 3 seconds) Front case adjustable at bedside Begins in the "ON" mode
Vacuum Range:	0-26.7 kPa (0 to 200 mmHg) and full available wall vacuum
Gauge Display:	Analog: Glow in the dark in low or no light environments Digital: Large, easy to read display with range indicators
Gauge Accuracy:	
Analog:	$\pm 5\%$ of full scale deflection or ± 10 mmHg
Digital:	$\pm 1\%$ of full scale or 0-200 Gauge: ± 2.0 mmHg
Battery (Digital):	Primary Lithium: 2/3AA, 3.6V, 1.6 Ah

*American Society for Testing & Materials

Push-To-Set™ Pediatric/Neonatal Intermittent Suction Regulators (ISU) (Analog or Digital)



8700-1273-900
Pediatric
(ISO)



8700-1271-900
Pediatric
(ANSI)



8700-1371-900 (ANSI)
8700-6373-900 (ISO)
Pediatric



8700-1279-900
Neonatal
(ANSI)



8700-1372-900 (ANSI)
8700-6372-900 (ISO)
Neonatal

Technical Specifications

Safety Feature:	Push-To-Set™ Automatic occlusion device Quick-To-Max (2 turns to full wall vacuum) One hand to set vacuum level Positive Pressure Safety Relief Valve
Flow Rate:	Intermittent: preset at 8 L/min per ASTM* Continuous: 0 to 80 L/min (without fittings at full increase)
Timing:	Easily adjustable without cover or gauge removal Silent ON/OFF switching Preset 15 seconds ON / 8 seconds OFF (range: ± 3 seconds) Front case adjustable at bedside Begins in the "ON" mode
Gauge Range:	0 to 21.3 kPa (0 to 160 mmHg) Pediatric (Analog & Digital) 0 to 21.3 kPa (0 to 160 mmHg) Neonatal (Analog) 0 to 13.3 kPa (0 to 100 mmHg) Neonatal (Digital)
Vacuum Range:	0 to 18.0 kPa (0-135) mmHg Pediatric 0 to 13.3 kPa (0-100 mmHg) Neonatal
Gauge Display:	Analog: Glow in the dark in low or no light environments Digital: Large, easy to read display with range indicators
Gauge Accuracy:	Analog: ± 8.0 mmHg or ±5% Full Scale Deflection Digital: ± 1.0 mmHg or 1% of full scale deflection (Neonatal) ± 1.6 mmHg or 1% of full scale deflection (Pediatric)
Battery (Digital):	Primary Lithium: 2/3AA, 3.6V, 1.6 Ah

*American Society for Testing & Materials

Push-To-Set™ Adult Continuous Vacuum Regulator (CVR) (Analog or Digital)



8700-1224-900
Adult
(ANSI)



8700-1324-900
Adult
(ANSI)



8700-1229-900
Adult
(ISO)



8700-1226-900
Adult
(ANSI)



8700-1326-900 (ANSI)
8700-1329-900 (ISO)
Adult

Standard Three Mode Continuous (Adult)

Modes: I (On), O (OFF), MAX

Gauge: Standard 0-26.7 kPa
(0-200 mmHg) Full Vacuum

Color Band: Low, Medium, High & Full
Vacuum

Instantaneous Full Wall Vacuum Mode

High Three Mode Continuous (Adult)

Modes: I (ON), O (OFF), MAX

Gauge: High Vacuum 0-101.3 kPa (0-760 mmHg)

Color Band: Solid orange/variable to orange
Instantaneous Full Wall Vacuum Mode



8700-1225-900
Adult
(ANSI)



8700-1325-900
Adult
(ANSI)



8700-1230-900
Adult
(ISO)



8700-1330-900
Adult
(ANSI)



8700-1430-900 (ANSI)
8700-1337-900 (ISO)
Adult

Standard Two Mode Continuous (Adult)

Modes: I (ON), O (OFF)

Gauge: Standard 0-26.7 kPa
(0-200 mmHg) Full Vacuum

Color Band: Low, Medium, High & Full
Vacuum

High Two Mode Continuous (Adult)

Modes: I (ON), O (OFF)

Gauge: High Vacuum 0-101.3 kPa (0-760 mmHg)

Color Band: Solid orange/variable to orange

Push-To-Set™ Pediatric/Neonatal/C.A.S.S. Continuous Vacuum Regulator (CVR)(Analog or Digital)



8700-1232-900

Neonatal
(ISO)

8700-1231-900

Neonatal
(ANSI)

8700-1331-900

(ANSI)
8700-1332-900
(ISO)
Neonatal

8700-1227-900

C.A.S.S.
(ANSI)

8700-1235-900

Pediatric
(ISO)

8700-1234-900

Pediatric
(ANSI)

8700-1334-900

(ANSI)
8700-1335-900
(ISO)
Pediatric

Two Mode Neonatal Continuous

Modes: I (ON), O (OFF)

Gauge: Low Vacuum

0-13.3 kPa (0-100 mmHg/Digital)

0-21.3 kPa (0-160 mmHg/Analog)

Color Band: Low, Medium, High

Regulated Vacuum: 0-100 mmHg

Two Mode C.A.S.S. Continuous

Modes: I (ON), O (OFF)

Gauge: Low Vacuum

0-21.3 kPa (0-160 mmHg)

Color Band: Low, Medium, High

Regulated Vacuum: 0-140 mmHg

Two Mode Pediatric Continuous

Modes: I (ON), O (OFF)

Gauge: Low Vacuum

0-21.3 kPa (0-160 mmHg)

Color Band: Low, Medium, High

Regulated Vacuum: 0-135 mmHg

Technical Specifications

Safety features:

Push-To-Set™ passive, safe vacuum level selection

Quick to Max - 2 turns or less to full wall vacuum resuscitation

One hand to set vacuum level correctly and safely

Negative Pressure Safety Relief Valve (Neonatal, Pediatric & C.A.S.S. Units)

Gauge Accuracy:

Analog: ±5% full scale deflection

Digital: ±1% of full scale deflection or

0-13 kPa (0-100 Gauge): ± 1.0 mmHg

0-21 kPa (0-160 Gauge): ± 1.6 mmHg

0-27 kPa (0-200 Gauge): ± 2.0 mmHg

0-100 kPa (0-760 Gauge): ± 7.6 mmHg

Vacuum Range:

0-13.3 kPa (0-100 mmHg)(Neonatal); 0-18.0 kPa (0-135 mmHg)(Pediatric);

0-18.7 kPa (0-140 mmHg) (C.A.S.S.);

0-26.7 kPa (0-200 mmHg) and up to full wall vacuum (Standard);

0-101.3 kPa (0-760 mmHg)(High)

Gauge Display:

Analog: Glow in the dark in low or no light environments

Digital: Large, easy to read display

Flow Rate:

Adult: 0-80 Lpm without fittings at full increase

Neonatal/Pediatric/C.A.S.S.: 0-50 Lpm without fittings at full increase

Battery:

Primary Lithium 2/3AA, 3.6V, 1.6 Ah

Color Coding Labels

Color Code your Push-To-Set™ ISU or CVR Vacuum Regulators.

A solution for labeling your regulators to show department ownership or special clinical applications.

Can be used on either Analog or Digital Regulators, ISO or ANSI



Intermittent Suction Unit



Continuous Vacuum Regulator



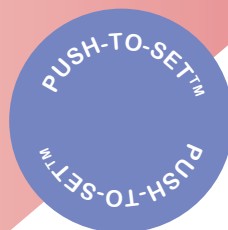
8700-0010-101
GOLD
(5 labels per sheet)



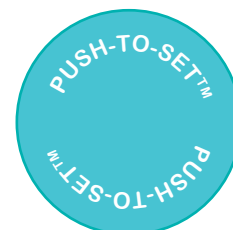
8700-0010-102
PEACH
(5 labels per sheet)



8700-0010-103
WATERMELON
(5 labels per sheet)



8700-0010-104
PURPLE
(5 labels per sheet)



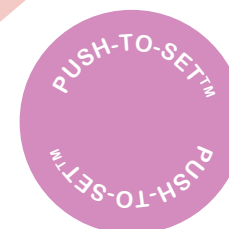
8700-0010-105
TEAL
(5 labels per sheet)



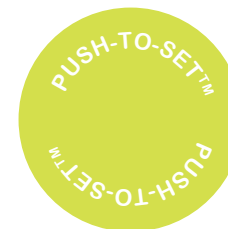
8700-0010-106
BLUE
(5 labels per sheet)



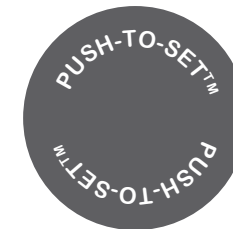
8700-0010-107
LIGHT GRAY
(5 labels per sheet)



8700-0010-108
PINK
(5 labels per sheet)



8700-0010-109
LIME
(5 labels per sheet)



8700-0010-110
DARK GRAY
(5 labels per sheet)

Color Coding

Color Code your Push-To-Set™ Digital ISU or CVR Vacuum Regulators.

A solution for labeling your regulators to show department ownership or special clinical applications.

Color cases are only available with a digital gauge.



Blue



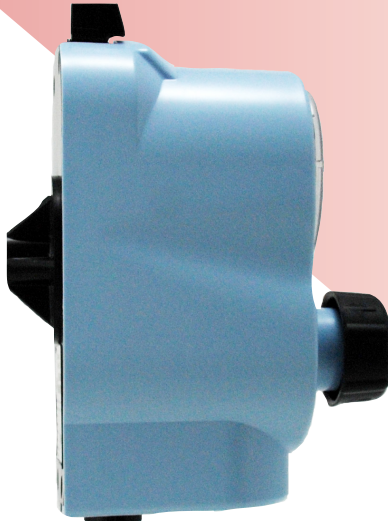
Yellow



Purple



Pink



Lt. Blue



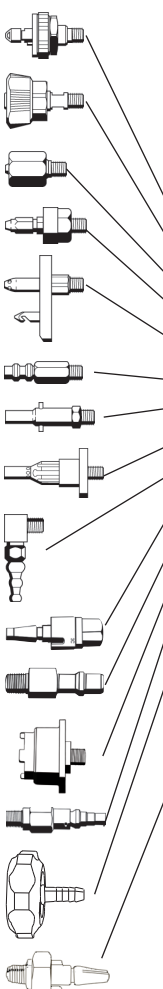
Red

Additional colors are available for an additional charge. Please contact inside sales at 1-847-855-0800

Ordering Matrix - Intermittent Suction Unit

87 XX - XXXX - 9 XX

Push-To-Set™ Series

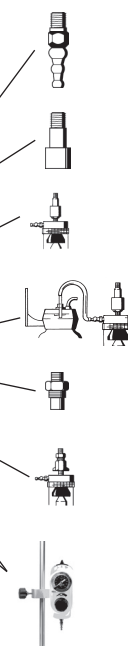


Adapter (vacuum source connection)

No Adapter with 1/8" NPT Female	00
Diamond	01
DISS Hand-I-Twist (HIT)	02
DISS Nut & Gland	03
Schrader®	04
Chemetron® Rectangle Striker (NCG)	05
Puritan Bennett®	07
O.E.S. Twist	08
O.E.S. Med Star®	09
90° Tubing Nipple	11
BOC (British Standard)	31
DIN (German Standard)	32
AFNOR (French Standard)	33
AGA (Nordic Standard)	34
SIS (Australian)	35
Japanese	14

Fittings (patient connection)

No Fitting 1/8" NPT Female	00
Tubing Nipple	01
Locking Gland	04
Locking Gland & Overflow Safety Trap	05
Locking Gland, Overflow Safety Trap and 1300 ml Plastic Bottle with Wall Slide, Tubing	06
DISS Male	07
DISS Male & Overflow Safety Trap, DISS Wing Nut & Gland	08
Pole Mount Bracket with Locking Gland & Overflow Safety Trap	28
Pole Mount Bracket with Tubing Nipple	29



Product Identifier Number

Analog:

	ANSI	ISO
Adult Intermittent Suction Unit.....	*1251	*1253
Pediatric Intermittent Suction Unit	1271	1273
Neonatal Intermittent Suction Unit.....	1279	

Digital:

Adult Intermittent Suction Unit.....	1351	6353
Pediatric Intermittent Suction Unit	1371	6373
Neonatal Intermittent Suction Unit.....	1372	6372

*MR Conditional

Product Identifier Number

Digital PTS Regulators (Colors)	Yellow	Blue	Pink	Red	Lt. Blue	Purple
Intermittent Suction Unit (ISO)	6453	6553	6653	6753	6853	6953
Intermittent Suction Unit/Pediatric (ISO)	6473	6573	6673	6773	6873	6973
Intermittent Suction Unit/Neonatal (ISO)	6472	6572	6672	6772	6872	6972
Intermittent Suction Unit (ANSI)	1451	1551	1651	1751	1851	1951
Intermittent Suction Unit/Pediatric (ANSI)	1471	1571	1671	1771	1871	1971
Intermittent Suction Unit/Neonatal (ANSI)	1472	1572	1672	1772	1872	1972

Ordering Matrix - Continuous Vacuum Regulator

87 XX - XXXX - 9 XX

Push-To-Set™ Series

Adapter (vacuum source connection)

No Adapter with 1/8" NPT Female	00
Diamond	01
DISS Hand-I-Twist (HIT)	02
DISS Nut & Gland	03
Schrader	04
Chemetron Rectangle Striker (NCG)	05
Puritan Bennett	07
O.E.S. Twist	08
O.E.S. Med Star	09
90° Tubing Nipple	11
BOC (British Standard)	31
DIN (German Standard)	32
AFNOR (French Standard)	33
AGA (Nordic Standard)	34
SIS (Australian)	35
Japanese	14

Fittings (patient connection)

No Fitting 1/8" NPT Female	00
Tubing Nipple	01
Locking Gland	04
Locking Gland & Overflow Safety Trap	05
Locking Gland, Overflow Safety Trap and 1300 ml Plastic Bottle with Wall Slide, Tubing	06
DISS Male	07
DISS Male & Overflow Safety Trap, DISS Wing Nut & Gland	08
Pole Mount Bracket with Locking Gland & Overflow Safety Trap	28
Pole Mount Bracket with Tubing Nipple	29

Product Identifier Number

	ANSI	ISO
Analog:		
3-Mode Adult Continuous Vacuum Regulator.....	*1224	
2-Mode Adult Continuous Vacuum Regulator.....	*1225	
3-Mode Adult High Continuous Vacuum Regulator	*1226	1229
2-Mode Adult High Continuous Vacuum Regulator	*1330	1230
2-Mode Pediatric Continuous Vacuum Regulator.....	1234	1235
2-Mode Neonatal Continuous Vacuum Regulator	1231	1232
2-Mode C.A.S.S. Continuous Vacuum Regulator.....	1227	
Digital:		
3-Mode Adult Continuous Vacuum Regulator.....	1324	
2-Mode Adult Continuous Vacuum Regulator.....	1325	
3-Mode Adult High Continuous Vacuum Regulator	1326	1329
2-Mode Adult High Continuous Vacuum Regulator	1430	1337
2-Mode Pediatric Continuous Vacuum Regulator.....	1334	1335
2-Mode Neonatal Continuous Vacuum Regulator	1331	1332

*MR Conditional

Product Identifier Number

Digital PTS Regulators (Colors)	Yellow	Blue	Pink	Red	Lt. Blue	Purple
3-Mode High CVR (ISO)	1429	1529	1629	1729	1829	1929
2-Mode High CVR (ISO)	1437	1537	1637	1737	1837	1937
2-Mode Pediatric (0-160mmHg) CVR (ISO)	1435	1535	1635	1735	1835	1935
2-Mode Neonatal (0-100mmHg) CVR (ISO)	1432	1532	1632	1732	1832	1932
3-Mode Standard CVR (ANSI)	1424	1524	1624	1724	1824	1924
3-Mode High CVR (ANSI)	1426	1526	1626	1726	1826	1926
2-Mode Standard CVR (ANSI)	1425	1525	1625	1725	1825	1925
2-Mode High CVR (ANSI)	1530	1630	1730	1830	1930	1030
2-Mode Pediatric (0-160mmHg) CVR (ANSI)	1434	1534	1634	1734	1834	1934
2-Mode Neonatal(0-100mmHg) CVR (ANSI)	1431	1531	1631	1731	1831	1931

Overflow Safety Traps and Filters

Overflow Safety Traps



Overflow Safety Trap
with Locking Gland
6700-0365-901



Overflow Safety Trap
with Hand-I-Twist (HIT)
6702-0365-901



Overflow Safety Trap with
DISS Wing Nut & Gland
6703-0365-901



Overflow Safety Trap with
DISS Male Adapter
6714-0365-901

Filters



Tubing x Tubing nipple

Package of 10
Package of 50

6730-0571-800
6730-0572-800



1/8" NPT Threaded x Tubing nipple

Package of 10
Package of 50

6730-0581-800
6730-0582-800



Medical Corporation®

always there | for life

Suction & Oxygen Therapy Devices ♦ Portable Suction Machines
Medical Gas Pipeline Equipment ♦ Vacuum & Air Compressor Packages and Accessories

Vacuum Regulators - Quick Reference Chart				
Type of Regulator	Model Type	Adult	Pediatric	Neonatal
Push-To-Set™ Intermittent Suction Unit (Analog)		X	X	X (ANSI Only)
Push-To-Set™ Continuous Vacuum Regulator (Analog)		X	X	X
Push-To-Set™ Intermittent Suction Unit (Digital)		X	X	X
Push-To-Set™ Continuous Vacuum Regulator (Digital)		X	X	X
Intermittent Suction Unit (Analog)		X	X	
Continuous Vacuum Regulator (Analog)		X	X	
Thoracic Vacuum Regulator (Analog)		X		
Surgical/Free-Flow Vacuum Regulator (Analog)		X		

© 2014 Ohio Medical Corporation. All Rights Reserved.

This document contains information that is proprietary and confidential to Ohio Medical Corporation. Use of this information is under license from Ohio Medical Corporation. Any use other than that authorized by Ohio Medical Corporation is prohibited.

Ohio Medical Corporation and the Ohio Medical Corporation logo are registered trademarks and Push-To-Set is a trademark of Ohio Medical Corporation.

U.S. Patent #6,623,463 (Push-To-Set™ Vacuum System)

Puritan Bennett is a registered trademark of Nellcor Puritan Bennett LLC.

Schrader is a registered trademark of Schrader-Bridgeport International, Inc.

Chemetron and Med Star are registered trademarks of Allied Healthcare Products, Inc.

Ohio Medical Corporation
1111 Lakeside Drive, Gurnee, IL 60031
Phone: 1+847-855-0800 - Fax: 1+847-855-6218
www.ohiomedical.com
255427 (Rev. 8) 12/2014

Ohio Medical Corporation Authorized Representative



OxygenCare Ltd.
2 Holfeld Business Park
Kilmacanogue Co Wicklow Ireland
Tel: +353 1 2769700 - Fax: +353 1 2764970