



Halstock & District Gardening Club

ANNUAL SHOW

With Halstock Fete

Saturday 31st August 2024

Show Schedule

Doors open to the public at 1pm

Exhibitors displays of flowers, Fruit, Veg, homecraft & photography

Plant stall & Produce auction

Teas

Show secretaries, Allison Rees & Carol Prior

Club Vice Presidents

Mr P Hester & Mrs N Lines

Rules

- 1. Entries:** Anyone, irrespective of age or gender may enter all classes except Classes 55-64 Entry form email to show secretary, Mrs Allison Rees, Kelowna, Halstock Leigh, BA22 9QX by **Wednesday 28th** August at the latest or be left in the Community Room, Halstock Shop in appropriate box. **Photographs to be entered with the forms**
The committee will not be held responsible for late arriving, lost or illegible entries
- 2. Number of Entries** Only one entry per class apart from classes:20-23,38-41, 49-54
- 3. Exhibits** All exhibits must be the property of the exhibitor and been in their possession for at least 2 months. Flowers, fruit & veg must have been grown in their own gardens apart from floral art classes. Homecraft must have been made by the exhibitor, No previously entered crafts or photographs are to be entered.
- 4. Floral Art Class 35** Accessories & backgrounds allowed
- 5. Staging** exhibits to be staged 8-10.45am until 3.45pm
- 6. Containers** Exhibitors to supply own vases, dishes etc, committee will not be responsible for loss or damage
- 7. Trade Names** No container must display trade name

8. **Judging:**
 - a No Exhibitor allowed in the hall during the judging
 - b Judges decision is final,
 - c In the event of insufficient entries or inadequate standard the judge may withhold any/all awards
9. **Removal of Exhibits/Auction** Exhibits to be removed by 4pm, any left will be auctioned to raise funds for the show, donations gratefully received
10. **Scoring** 1st-4 points, 2nd-3 points, 3rd-2 points, **Overall winner receives voucher for Halstock Shop**
cash prizes for children's classes

PROGRAMME

8.00-10.45	All entries to be staged
10.45-11	Stewards check, judging
12.30	Fete opens in field
1pm	Flower show opens
2pm	Potato weigh-in
3.30pm	Presentations
3.45pm	Removal of exhibits
4pm	Auction of produce

Judges

Flowers: Dr Francis Burroughes

Vegetables & fruit: Mr Peter Yeates

Homecraft: Toby Bault

Photography: Christopher Baker

Vegetables Class

1. Grower's Choice, selection of different fruit and/or veg in a garden trug or basket max dimensions: 24" x 24"
2. 5 potatoes-white (no coloured eyes)
3. 5 potatoes-coloured
4. 5 onions
5. 3 onions as grown to pass through 3" ring
6. 3 carrots
7. 7 runner beans
8. 7 shallots
9. 5 tomatoes
10. 7 cherry tomatoes, max diameter 1 $\frac{1}{2}$ "
11. 3 beetroot
12. 8 French Beans
13. 2 cucumbers
14. 1 pair courgettes not exceeding 6"
15. Bunch mixed culinary herbs, max container 4" diameter
16. Pair of any other vegetable

Fun Class

17. Longest runner bean
18. Unusual/rude shaped fruit or veg
19. Potato growing competition, bag supplied from March

Fruit Classes

multiple entries of different varieties allowed

- 20. Dish of dessert apples -3 of one variety
- 21. Dish of cooking apples -3 of one variety
- 22. 7 plums
- 23. Dish of any other home-grown fruit

Flower Classes

Please note blooms are individual flowers so remove all side buds

- 24. 1 vase of 3 dahlias
- 25. 3 different varieties H.T. roses, One stem of each
- 26. 1 specimen or perfumed rose
- 27. 3 stems of same variety any other rose
- 28. 7 sweet peas
- 29. 1 hydrangea head
- 30. 3 fuchsia heads supported through cling film over container of water
- 31. Mixed flowers, max 12 stems, container not more than 7" diameter

Pot Plants Note: 1 plant in each pot

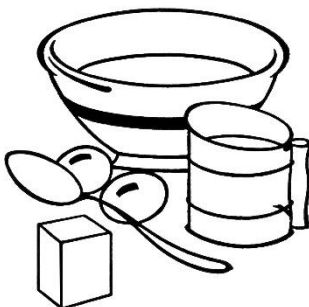
- 32. Decorative foliage plant in pot
- 33. Flowering pot plant
- 34. Cacti or succulent in a pot

Floral Art Please read max measurements allowed

- 35. 'The French Olympics' Arrangement, space allowed 20"
- 36. Basket of garden flowers space allowed 12"
- 37. Just One Colour Space allowed 24"

Homecraft (classes 38-41 up to 2 entries allowed)

- 38. Jar (1lb approx.) any chutney
- 39. Jar (1lb approx..) jam
- 40. Small jar ($\frac{1}{2}$ lb. approx.) any jelly
- 41. Jar (1lb approx.) marmalade
- 42. 6 hen's eggs
- 43. 5 chocolate biscuits
- 44. Fruit cake
- 45. Banana Bread
- 46. Cake made with a vegetable
- 47. Plate of 5 sausage rolls
- 48. A home-made tippie



Photography

multiple entries up to 2 per class

Max print size 8"x6" including any mounts,
Unframed

Entries to be handed in with Entry Form by
the 28th August

- | | |
|-------------------------|---------------|
| 49. Black & White print | Architectural |
| 50. Colour Print theme | Generations |
| 51. Colour Print theme | Close-up |
| 52. Colour Print theme | The Sea |
| 53. Colour Print theme | Farming Life |
| 54. Colour Print theme | Pets |



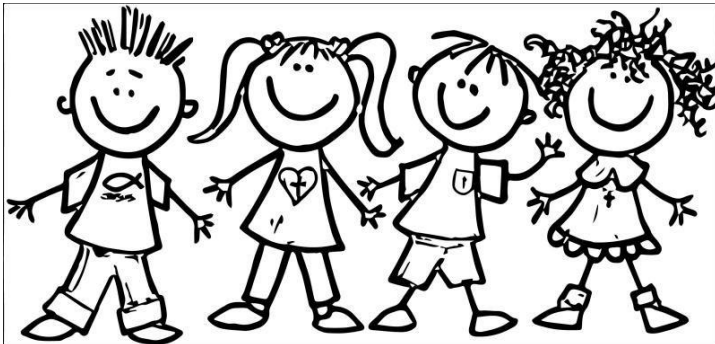
Children's Classes

7 Years & under

1. Hand and/or foot print piece of art
2. 3 decorated biscuits
3. Paper craft using a toilet roll
4. Make an Olympic Rosette
5. A Selfie

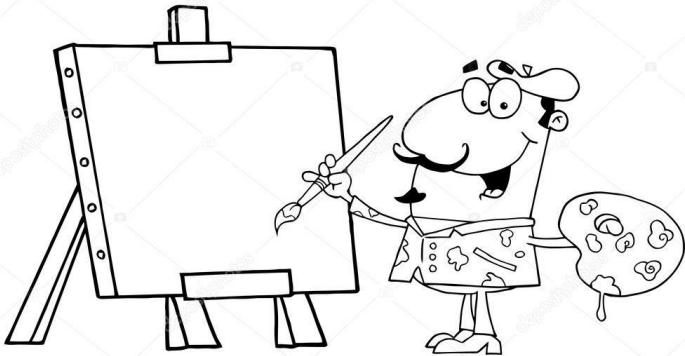
8-14 Years

6. A Selfie
7. Poem or limerick
8. A piece of origami
9. A Piece of art titled 'My hobby' A4 size
10. An Olympic themed edible item



Art Exhibition

This year we are asking anyone who would like to exhibit some art, sculpture, or any other handicraft to enter. This will be voted on by members of the general public rather than a judge.



TOP TIPS

1. **Read the Schedule Carefully** especially the rules & conditions.
2. **Allow plenty of time for staging**, help available.
3. **Strictly no entry during judging**

Fruit & Veg

4. **Condition of fresh produce is important**, ideally without blemishes, or signs of pests, however best to participate
5. **Aim for similar shape & size if more than one**
6. **Clean veg carefully to remove soil**, do not polish or rub off skins
7. **Soft fruits should retain their natural bloom**, don't wash
8. **Leave stalks on fruit**
9. **The green calyx should be as fresh as the fruit**
10. **Presentation important**; symmetrical, stalks to middle or back
11. **Leave about 1cm stalk on beans & peas**, display facing same way
12. **Runner & French beans best straight**, little or no contours of the bean inside showing
13. **Courgette should be 10-15cm long** Include flowers if possible
14. **Leave approx. 8cm greenery on beetroot, carrot, parsnip etc**

15. **Onions** should be weighed or measured to criteria in schedule, tie tops with raffia or undyed string, trim roots, avoid onions with overly thick necks & don't over-skin.
16. **Choose medium sized potatoes** with shallow eyes & clear skin

Flowers & pot Plants

17. Remove any damaged flowers, discoloured or broken leaves
18. Fill container with water
19. A perfect single rose is $\frac{1}{2}$ - $\frac{3}{4}$ open with circular outline

Homecraft

20. All Jars & lids should be clean with no brand names.
21. Chutneys best in lock-top jars or with plastic lined lids
22. Jars of jam presented with wax discs & cellophane covers or jar lids

