

Fibreglass Modular Handrail System



Tubular handrail system is particularly simple to install on site. The tube can be cut to size and matching pairs of moulded fittings can be fixed to the tube to complete the system.

The fittings can be pop riveted to the tube or where extra strength is required they can be mechanically fixed with a pan head screw and a blind rivet nut. This ensures that there are no protruding parts to snag on clothes or damage your hands. The mouldings can also be bonded to the tube with a single or two part external grade adhesive.

Anglia Composites tubular handrail system is an alternative to conventional steel handrail systems. It is manufactured from fibreglass (GRP) and is available in both yellow and grey from stock.

The system is based on 50mm diameter tube which has a 6mm thick wall for superior strength and durability. Many different moulded fittings are available to create a complete handrail system.



BENEFITS

- * Lightweight
- * Easy installation
- * Will never rot or rust
- * Non-conductive
- * Thermally stable
- * BS Compliant



Fibreglass Modular Handrail System



4 way connector

90° joint used to connect the midrail to the vertical post. Often paired with the T piece.



90 Degree Elbow

90° elbow joint usually used to form a 90 degree corner between the top rail and a vertical post.



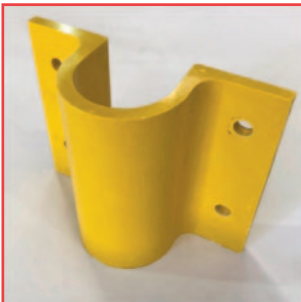
Universal Joint

Universal joint can swivel to create any angle up to 90 degrees then locked in place.



Swivel P Joint

The swivel P joint can be used to create a circular (polygon) handrail system.



Sidemount

The sidemount fitting is used to fix the handrail uprights to a wall or a staircase.



3 Way T piece

90 degree T piece is most often used to connect the toprail to the upright posts.



4 way Corner

90 degree 4 way corner used at the midrail level to connect to a corner post.



3 Way Corner

90 degree 3 way corner used at the toprail level to connect to a corner post.



Anglia Composites Ltd

Data Sheet for Tubular Handrail System

Fibreglass Modular Handrail System



Base Pedestal

The base foot is used for fixing to a level surface for the upright posts.



30 Degree T Piece

30 degree T piece could be used on a stairway if it is 30 degrees pitch.



30 Deg Four Way

30 degree 4 way could be used on a stairway if it is 30 degrees pitch.



30 Degree Elbow

30 degree elbow could be used on a stairway if it is 30 degrees pitch.



60 Degree Elbow

60 degree elbow could be used on a stairway if it is 30 degrees pitch.



Universal 3 Way Joint

A versatile swivel piece that can act as an adjustable T piece.



50mm Dia Tube

GRP tube 50mm diameter with a 6mm wall thickness for top rail, midrail and post stanchions



Universal 4 Way Joint

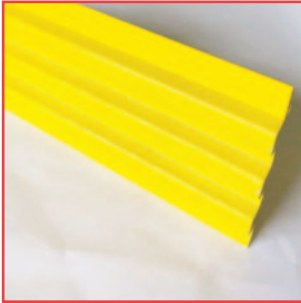
A versatile swivel piece that can act as an adjustable 4 way fitting.



Anglia Composites Ltd

Data Sheet for Tubular Handrail System

Fibreglass Modular Handrail System



Kick Plate

150mm deep x
15mm wide GRP
kick plate.



S/s Fixings

An M6 x 60 pan
head screw and an
M6 blind riv nut.
You will need M6
and M9 drill bits.

Screenguard Infill Mesh



Screenguard mesh grating is available in grey or yellow and can be cut to size for you.

The grating is manufactured from fibreglass so it retains all the features of the moulded components.

The mesh is smooth on both sides and is 12mm thick.

All components are Class 1 fire rated and and manufactured to ISO 9001 quality standards.



Double Mesh Clamp

This component is used to clamp two sections of screen-guard to a central post.



Single Mesh Clamp

This component is used to clamp one section of screen-guard to a central post or end of run.

