

HygroMatik FlexLine Electrode Steam Generators & Spares



Supplied Complete: Integral Digital Touch Screen Display, Steam Cylinder, Standard SuperFlush System, Temperature Sensor, & Controls for Essence Pump, Fan & Light

Conductivity of Supply Water:
Please advise on the supply water TDS, or Conductivity in uS (microsiemens), and if your generator is being fed by a salt-based water softener. This information will assist us determine the optimum specification for your purchase.

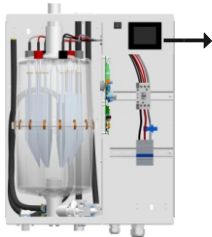
Code	Generator Specification	kW rating	Price
FLE10-TSPA-AE00	10kg/hr Generator c/w with Superflush	(7.1-7.8kW)	3,270.00
FLE15-TSPA-AE00	15kg/hr Generator c/w with Superflush	(10.7-11.7kW)	3,600.00
FLE20-TSPA-AE00	20kg/hr Generator c/w with Superflush	(14.3-15.6kW)	4,050.00
FLE25-TSPA-AE00	25kg/hr Generator c/w with Superflush	(17.9-19.5kW)	4,200.00
FLE30-TSPA-AE00	30kg/hr Generator c/w with Superflush	(21.4-23.4kW)	4,380.00
FLE40-TSPA-AE00	40kg/hr Generator c/w with Superflush	(28.6-31.3kW)	4,675.00
FLE50-TSPA-AE00	50kg/hr Generator c/w with Superflush	(35.9-39.2kW)	5,135.00



The SuperFlush System is included as standard for all complete generators

Delivery is applicable on ALL Generators - please ask for a quote

GUIDANCE NOTE: Question: What size of generator do I need?
Answer: Calculate internal cabin volume in cubic metres - then allow a minimum of 1kg/hr for each cubic metre of cabin volume.



FlexLine - excellent ease of operation:

- * All HygroMatik FlexLine units are equipped with a capacitive 3.5" touch screen display.
- * Operation and programming are selected via a flat and intuitive menu structure analogous to modern smart-phone logic.
- * In addition, subsequent software updates are quickly and easily possible via USN Flash
- * Optional 5" touch screen for external control available - please ask.

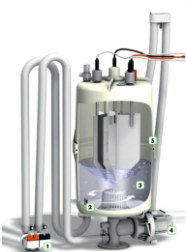
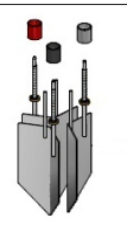


Cylinder Code	Description	Steam Outlet (mm)	Price
Cylinders with Stainless Steel Electrodes:			
SP-03-00000	FLE10 - Complete Cylinder	DN40	380.00
SP-04-00002	FLE15 - Complete Cylinder	DN40	517.00
SP-04-00000	FLE20 - Complete Cylinder	DN40	526.00
SP-04-00100	FLE25 - Complete Cylinder	DN40	674.00
SP-05-00000	FLE30 - Complete Cylinder	DN40	685.00
SP-05-00000	FLE40 - Complete Cylinder	DN40	685.00
SP-06-00000	FLE50 - Complete Cylinder	DN40	830.00



Electrode Set	Description	Price
Electrode Set for Standard Stainless Steel Electrodes:		
x3 B-3204021	FLE10 - Set of 3 Electrodes only	90.00
B-2204087	FLE15 - Set of 3 Electrodes only	100.00
B-2206221	FLE20 - Set of 3 Electrodes only	130.00
B-2204089	FLE25 - Set of 6 Electrodes only	180.00
B-2204093	FLE30 - Set of 6 Electrodes only	225.00
B-2204093	FLE40 - Set of 6 Electrodes only	225.00
B-2204091	FLE50 - Set of 6 Electrodes only	250.00
Zinc Plated Stainless Steel Electrodes (High Chloride content in water above 40mg/l):		
x3 B-3204023	FLE10 - Set of 3 Electrodes only	136.00
B-2205055	FLE15 - Set of 3 Electrodes only	176.00
B-2205059	FLE20 - Set of 3 Electrodes only	176.00
B-2204043	FLE25 - Set of 6 Electrodes only	300.00
x6 B-2204097	FLE30 - Set of 6 Electrodes only	300.00
B-2204097	FLE40 - Set of 6 Electrodes only	300.00
B-2204047	FLE50 - Set of 6 Electrodes only	325.00

Please Note:
Hand Nuts sold separately



Innovative cylinder rinsing system, can considerably extend cylinder operational time before need for removal and cleaning. Whilst draining, a pressurised water jet makes scale laying at the cylinder base, swirl & therefore creating optimal conditions for the removal of limescale and other residues.

SuperFlush	Description	Price
WD-03-10301	FLE05 - FLE10 SuperFlush Retro-fit Std System	205.00
WD-04-10301	FLE15 - FLE25 SuperFlush Retro-fit Std System	230.00
WD-05-10301	FLE30 - FLE40 SuperFlush Retro-fit Std System	230.00
WD-06-10301	FLE50 - FLE65 SuperFlush Retro-fit Std System	230.00
SP-07-26000	Steam Hose - DN25	44.00/m
SP-07-26001	Steam Hose - DN40	65.00/m
B-2420423	Drain Hose - 1 1/4"	33.00/m
B-2204002	Condensate Hose - DN12	17.00/m