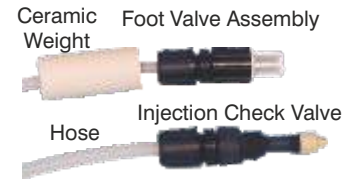


CHEMICAL DOSING

LMI CHEMICAL DOSING PUMPS - 300 SERIES

LMI SERIES B DOSING PUMPS - MANUAL CONTROL WITH VARIABLE STROKE RATE



Each LMI chemical dosing pump is supplied with an Acrylic Injection Check Valve, Foot Valve Assembly, Ceramic Weight and 6 metres of Hose.

No pressure relief valve is supplied with these pumps.

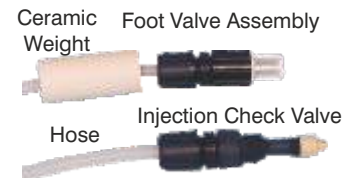
If you require a different head material, please ask for a quotation ~

sales@leisureteq.co.uk

Pump Model	Output Range	Max. Pressure	Delivery Hose	Head	Price
B135-360N2	17.0ml - 17.0Lt/hr	@ 3.4bar	3/8" OD Hose	Acrylic	890.00
B145-310N2#	26.0ml - 26.0Lt/hr	@ 2.0bar	1/2" OD Hose	Acrylic	1,050.00

#Not recommended for use with a 4 function valve due to the low pressure

LMI SERIES C DOSING PUMPS - MANUAL CONTROL WITH VARIABLE STROKE RATE



Each LMI chemical dosing pump is supplied with an Acrylic Injection Check Valve, Foot Valve Assembly, Ceramic Weight and 6 metres of Hose.

No pressure relief valve is supplied with these pumps.

If you require a different head material, please ask for a quotation ~

sales@leisureteq.co.uk

Pump Model	Output Range	Max. Pressure	Delivery Hose	Head	Price
C135-310N2	30.4ml - 30.4Lt/hr	@ 4.2bar	1/2" OD Hose	Acrylic	1,250.00
C145-30N2#	76.0ml - 76.0Lt/hr	@ 1.75bar	1/2" OD Hose	Acrylic	1,550.00

#Not recommended for use with a 4 function valve due to the low pressure

NEW Style 4 Function Valve



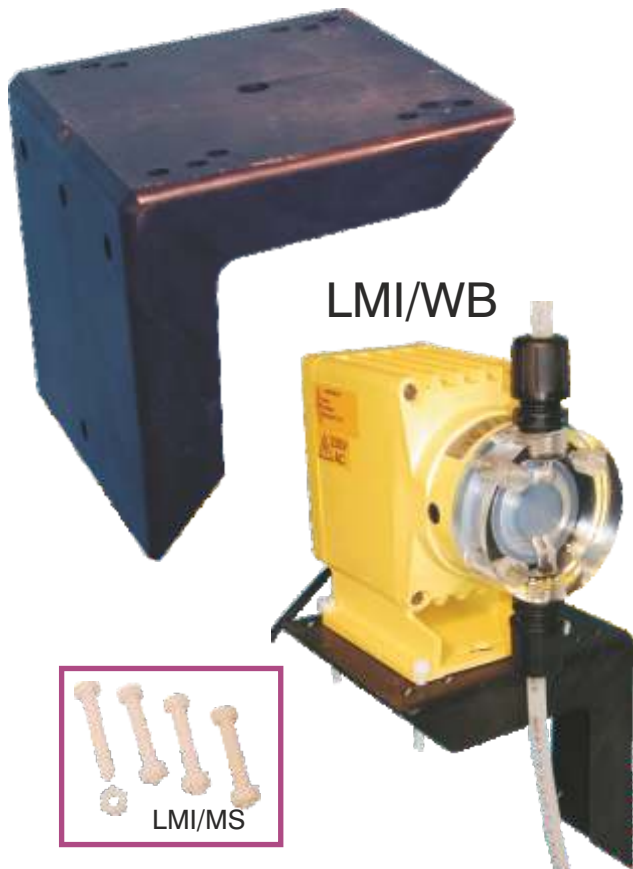
The 4 function valves provide the following functions:

- * Anti-Syphon
- * Back Pressure valve
- * Priming
- * Line Depressurisation.

Code	Description	Price
36276	New Style 4 Function Valve c/w 3/8" OD Hose For Liquid End: 360 / 390 e.g. B135-360N2 / B135-360S2	100.00
36277	New Style 4 Function Valve c/w 1/2" OD Hose For Liquid End: 310 e.g. C135-310N2 / C135-310S2	100.00

Spares may still be available for the old style valves, please email your requirements..

LMI Pump Wall Mounting Bracket

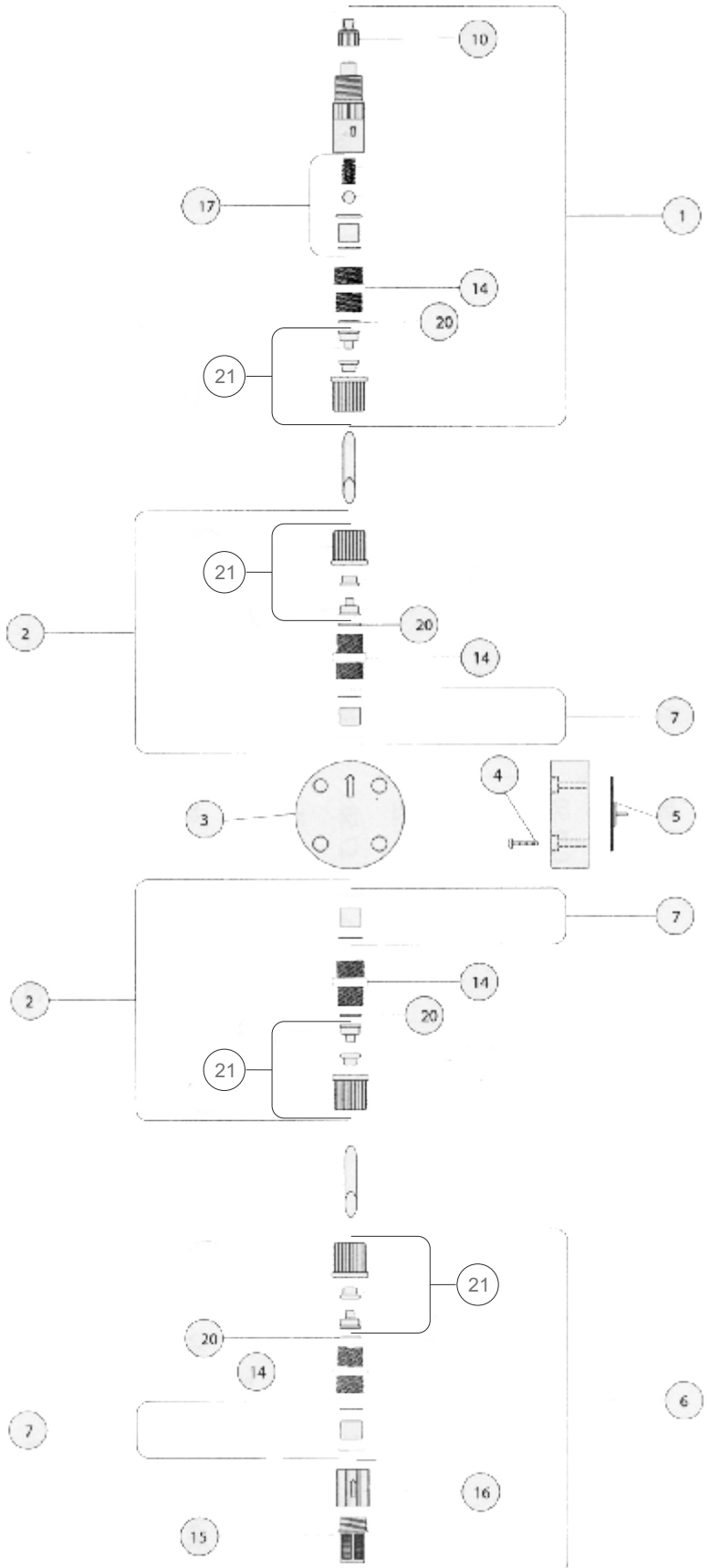


LMI/WB

LMI/MS

Code	Description	Price
LMI/WB	Wall Mounting Bracket	49.50
LMI/MS	Plastic Mounting Screws/Nuts Set of 4	10.00

LMI Spare Parts Listings 300 series Pumps (refer to right)



Hose Connection Assemblies Imperial & Metric Hoses



Yellow fittings = imperial sizes ~ Grey fittings = metric sizes

Code	Description	Price
77382	1/4" OD Connection Kit	11.00
77383	3/8" OD Connection Kit	11.00
77384	1/2" OD Connection Kit	11.00
77378	6 x 3mm Connection Kit	13.50
77379	8 x 6mm Connection Kit	13.50
77380	12 x 9mm Connection Kit	17.50
77381	12 x 6mm Connection Kit	13.50

CHEMICAL DOSING LMI CHEMICAL DOSING PUMP SPARES

Spares for 300 Series LMI Pumps

ITEM	DESCRIPTION	350 Pump		360 Pump		390 Pump		310 Pump	
		Product Code	Price	Product Code	Price	Product Code	Price	Product Code	Price

Injection Check Valve & Spares

1	Injection Check Valve	77364/350	65.00	77364/360	65.00	77364/390	65.00	77364/310	65.00
2	Valve Assembly	77358/350	32.00	77358/360	27.00	77358/390	27.00	77358/310	27.00
10	Flapper Valve	27352	8.00	27352	8.00	27352	8.00	27352	8.00
17	Injection Cartridge	37349	15.00	37349	15.00	37349	15.00	37349	15.00
21	Hose Connection Assy	77382	11.00	77383	11.00	77383	11.00	77384	11.00

Pump Head & Spares

3	Acrylic Pump Head	36156	187.00	36158	187.00	36157	187.00	36159	285.00
3A	PVC/PVDF Pump Head	37750	39.00	37754	45.00	37752	39.00	37756	101.00
4	Pump Head Screw	10340	3.00	10340	3.00	10340	3.00	10340	3.00
5	Liquifram	30916	44.00	31420	49.00	30917	49.00	31419	80.00
7	Cartridge	77352	22.00	77350	12.00	77350	12.00	77350	12.00
8	Pump Shaft Seal	10973	5.00	10973	5.00	10973	5.00	10973	5.00
21	Hose Connection Assy	77382	11.00	77383	11.00	77383	11.00	77384	11.00

Foot Valve & Spares

6	Foot Valve Assembly	77367/350	54.00	77367/360	54.00	77367/390	54.00	77367/310	54.00
7	Cartridge	77352	22.00	77350	12.00	77350	12.00	77350	12.00
14	Valve Housing	77385	9.00	77385	9.00	77385	9.00	77385	9.00
15	Foot Strainer	10123	7.00	10123	7.00	10123	7.00	10123	7.00
16	Foot Valve Coupling	36204	15.00	36204	15.00	36204	15.00	36204	15.00
20	Cartridge Body O'Ring	4380051222	0.50	4380051222	0.50	4380051222	0.50	4380051222	0.50
21	Hose Connection Assy	77382	11.00	77383	11.00	77383	11.00	77384	11.00
Not Shown	Ceramic Weight	10322	8.50	10322	8.50	10322	8.50	10322	8.50

Spares Kits for LMI Pumps

Code	Description	Price
RPM-352-DMR	LMI 350 Liquid End Spares Kit	91.00
RPM-362-DMR	LMI 360 Liquid End Spares Kit	115.00
RPM-392-DMR	LMI 390 Liquid End Spares Kit	115.00
RPM-312-DMR	LMI 310 Liquid End Spares Kit	154.00
SP-U6	LMI 30 Liquid End Spares Kit	220.00

Are you trying to identify your pump?

Simply determine the 5 digit code imprinted on the Acrylic Head

Refer then to line no. 3 above in the spares list to identify which pump head matches.

If not shown - please ask!



Spares Kit Contents for LMI Pumps

