

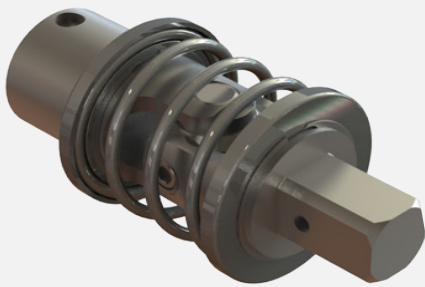


Extreme environments of subsea applications call for exceptional corrosion resistance. Belden's universal joints and complete shaft assemblies are available for a broad range of applications in the harshest and most adverse environments.

CUSTOMIZATION

Our engineers can design custom solutions for virtually any application. We offer single and double universal joints with a wide variety of hub connections. Complete telescopic drive shafts with adjustable length and quick release features are also available. For additional environmental protection, lubricant retaining boots can be

added. For systems that employ sacrificial anode protection systems, cable connectors can be fitted to ensure electrical continuity throughout the assembly. Diameters range from 1/2 " (13 mm) to 6" (153 mm) with a standard operating angle of 35 degrees.



MATERIALS

Belden uses higher-grade stainless steel for universal joints in subsea applications.

The standard joint yokes are made from AISI 303 and the pins & blocks are made from hardened AISI 416 stainless steel to provide higher strength and improved wear resistance. To prevent galling and to improve the joints' friction properties, the yokes' contact surfaces are PTFE-coated. Standard single joints can be modified with a variety of stainless steel grades, including but not limited to: AISI 303, 304, 316L, 416, 420, 17-4,

duplex stainless steel like S32760 or superalloys such as Inconel. Components can be finished with special coatings to improve corrosion resistance or provide dry lubrication capabilities.



CUSTOMIZED SOLUTIONS



SINGLE JOINT...

Made from 316L stainless steel and coated with protective surface finish. Cables connect both hub bolts for safe operation of sacrificial anode systems.



DOUBLE JOINT...

Made from 316L stainless steel for short coupled valve actuations in subsea environments.



CHAIN-JOINT...

Made from different versions of alloy and stainless steel. Number of links is customized for each application.



TELESCOPING DRIVE SHAFT...

Made from 316L stainless steel with protective boots and dry lubricant plating. Used for subsea remote valve actuation systems.

BELDEN
universal



BELDEN UNIVERSAL
NORTH AMERICA
2500 Braga Drive
Broadview, IL 60155, USA
eMail: info@beldenuniversal.com
Phone: +1 708.344.4600
Fax: +1 708.344.0245

www.beldenuniversal.com



BELDEN UNIVERSAL
EUROPE, SOUTH AMERICA,
MIDDLE EAST, APAC, AFRICA
c/o PTMotion GmbH
Geneststr. 5, 10829 Berlin, Germany
eMail: info@beldenuniversal.de
Phone: +49 30 720 14 139

www.beldenuniversal.de

