



Belden custom-designs and manufactures universal joints for a variety of aerospace applications including high-lift actuation, control & steering mechanisms and flap actuation - where low deflection rates, high strength-to-weight ratios and long service life are essential. They are manufactured to satisfy the most demanding operating criteria, withstand the harshest working environments while requiring little maintenance in the field.



Our universal joints have been used by OEMs and Distributors in military, commercial, and private aircraft applications. The Belden universal joint has been a key component in aircraft applications for: **Boeing, Airbus, United Technologies, Moog, Lockheed, Raytheon, Sikorsky, Cessna and others.**

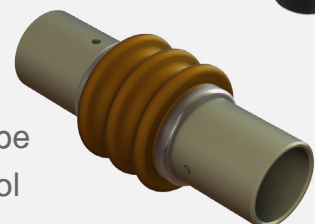


AS9100

Belden Universal is in the final phase of AS9100 certification for manufacturing products in compliance with the highest global quality system for providing safe and reliable products to the Aircraft, Space and Defense (AS&D) industry. In certain aspects, Belden's capabilities surpass some of the most stringent AS9100 standards.

MILITARY SPECIAL APPLICATIONS

Belden's military universal joints meet and exceed MIL-J-6193 specifications. In special cases when measured against stringent quality controls, Belden's standard military universal joints can also be deployed in aerospace applications, including positioning, flap control and operation.



CUSTOMIZATION

Belden customizes high-strength pin and block universal joints and drive shaft assemblies using a variety of hub and connection methods, internal and external splines.



MATERIALS

Materials and special coatings for high strength-to-weight ratio and extreme corrosive environments include precipitation hardened stainless steel, cadmium or zinc plated alloy steel, 17-4 / 15-5 PH stainless steel, aluminum, aircraft grade alloys and marine grade 316 and 316L stainless steel.

IN-HOUSE TESTING

To ensure the optimal performance of parts through thousands of operation cycles, Belden custom-manufactured a state-of-the-art in-house testing machine which provides immediate feedback on performance. Belden's setup is exceptionally efficient, with a superior test cell that benefits customers through faster delivery times and lower costs.



PAPERLESS INSPECTION

For easier maintenance of data, Belden transitioned to a paperless inspection system. As opposed to traditional paper records where the operator manually checks off inspection and tool requirements, the software automates, simplifies and speeds up procedures and allows all members of the production team to view live data at any time. It specifies what features to measure, the proper tools for measuring and selects inspection specifications for the various features and pieces.

