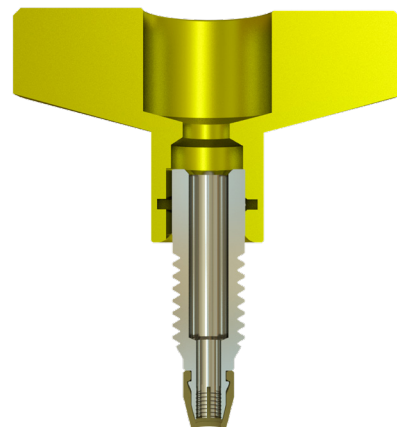


FINALLY, REUSABLE  
UHPLC FITTINGS AND  
ADAPTERS THAT WORK  
WITH ALL TUBING  
MATERIALS. HASSLE  
FREE, NO SEPARATE  
FERRULES TO LOSE.



## EXP<sup>®</sup>2 TI-LOK<sup>™</sup> FITTINGS AND ADAPTERS

### EXP<sup>®</sup>2 TI-LOK<sup>™</sup> FITTING SYSTEM FOR 1/16" TUBING

The EXP2 TI-LOK Fittings offer LC connections that can be hand-tightened to 18,000+ psi (1,250+ bar). The fittings are ideal for making HPLC and UHPLC connections that easily fit into tight spaces such as injection valves, column couplers, sample loops and column ovens.

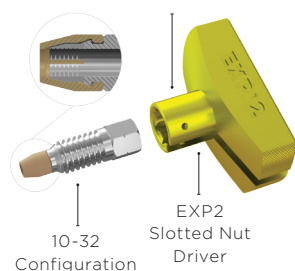
Evolving from the original Titanium Hybrid Ferrule technology, EXP2 TI-LOK Fittings feature built-in PEEK ferrules and threaded nuts precision machined from titanium. The new fittings combine the superior corrosion resistance and robustness of titanium with the sealing capability of PEEK. Utilizing a unique geometric design, the fittings firmly press tubing against the tube stop of any instrument port creating a zero-dead-volume (ZDV) connection. The ferrule does not permanently swage to the tubing, allowing for many repeat connections and the ability to adjust the tubing to different port depths. EXP2 TI-LOK Fittings are compatible with PEEK, PEEKsil, Hastelloy C and stainless steel tubing.

EXP2 TI-LOK Fittings include an EXP2 Driver - a small, easy to use knurled torque driver that snaps onto the nuts for hand-tightening and loosening. The EXP2 Driver is slotted and can be removed from the nut and tubing after use.

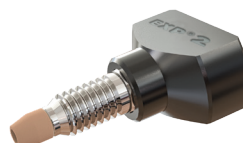
### EXP<sup>®</sup>2 TI-LOK<sup>™</sup> ALL-IN-ONE (AIO) FITTING

Meet the newest addition to our EXP2 Fitting line. The AIO Fitting incorporates all of the features above with one distinct difference: a permanently-fixed driver. When tight spaces are not an issue, we recommend using the AIO Fitting.

Snap ring allows for easy connection  
between EXP2 Nut and Driver



**EXP<sup>®</sup>2 TI-LOK<sup>™</sup> FITTING**  
Features a removable  
EXP2 Driver



**EXP<sup>®</sup>2 TI-LOK<sup>™</sup> AIO FITTING**  
Features a permanently-fixed  
EXP2 driver

# EXP<sup>®</sup>2 TI-LOK<sup>™</sup> FITTING AND ADAPTER SYSTEMS

## FOR ALL 1/32" TUBING AND 360µm OD FUSED SILICA TUBING

The EXP2 TI-LOK Fittings and Adapters offer capillary HPLC and UHPLC connections that seal to 20,000+ psi in any port and easily fit into tight spaces such as injection valves, column couplers, sample loops and column ovens.

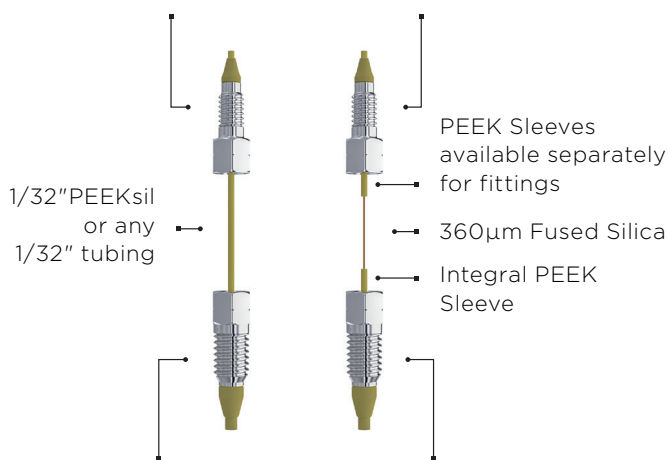
The EXP2 TI-LOK range of fittings and adapters allows users the versatility to change out capillary tube ID, length or end fittings to create virtually any tube set configuration. The EXP2 TI-LOK Fittings are available with 6-32 and 6-40 threads for 1/32" ports. The EXP2 TI-LOK Adapters will allow users to connect 1/32" OD tubing directly to a standard 10-32 port designed for 1/16" tubing.

The EXP2 TI-LOK Fittings and Adapters combine the robustness of titanium and the sealing capability of PEEK. Utilizing a unique patented inverted geometric design, the fittings and adapters firmly compress the PEEK sleeve of the PEEKsil or fused silica tubing against the tube stop of any instrument port creating a zero-dead-volume (ZDV) connection without fracturing the fused silica. The titanium portion of the fitting does not permanently swage to the tubing, allowing for many repeat connections and the ability to adjust the tubing to different port depths.

Using the EXP2 Driver, the EXP2 TI-LOK Fittings and Adapters can be hand-tightened into any HPLC or UHPLC port. The EXP2 Driver is a small, easy to use knurled torque driver which snaps onto the fitting hex for hand-tightening and loosening. The EXP2 Driver is slotted and can be removed from the fitting and tubing after each installation. The EXP2 TI-LOK Fittings and Adapters are available as kits which include the EXP2 Driver. For use with 360µm fused silica; 10-32 Adapters have an integral sleeve. Simply cut fused silica to desired length, insert into adapter and tighten into port. To use 6-32 and 6-40 fittings with fused silica tubing, the purchase of 1/32" OD PEEK sleeves is required.

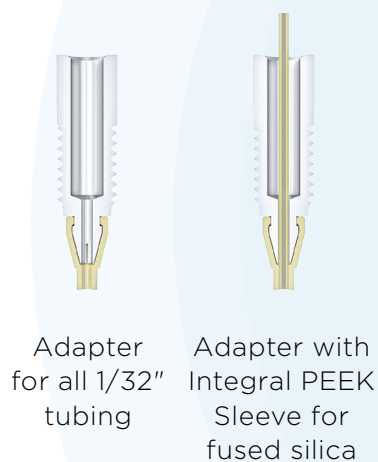
Additionally, the EXP2 TI-LOK 10-32 Adapters can be purchased with a 0.5µm frit embedded in the tip to create an integral filter or capillary column end-fitting in standard 1/16" tubing ports.

### EXP<sup>®</sup>2 TI-LOK<sup>™</sup> 6-32 or 6-40 Fitting

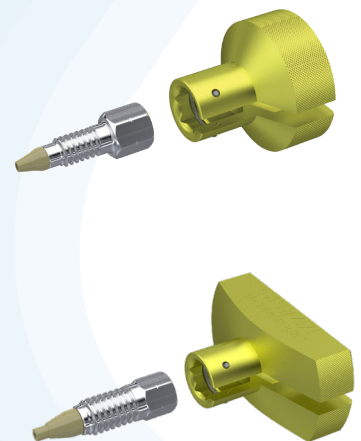


### EXP<sup>®</sup>2 TI-LOK<sup>™</sup> Hand-Tight Adapter Adapts 1/32" Tubing to 10-32 Ports

### Cross Sections of EXP<sup>®</sup>2 10-32 Adapters

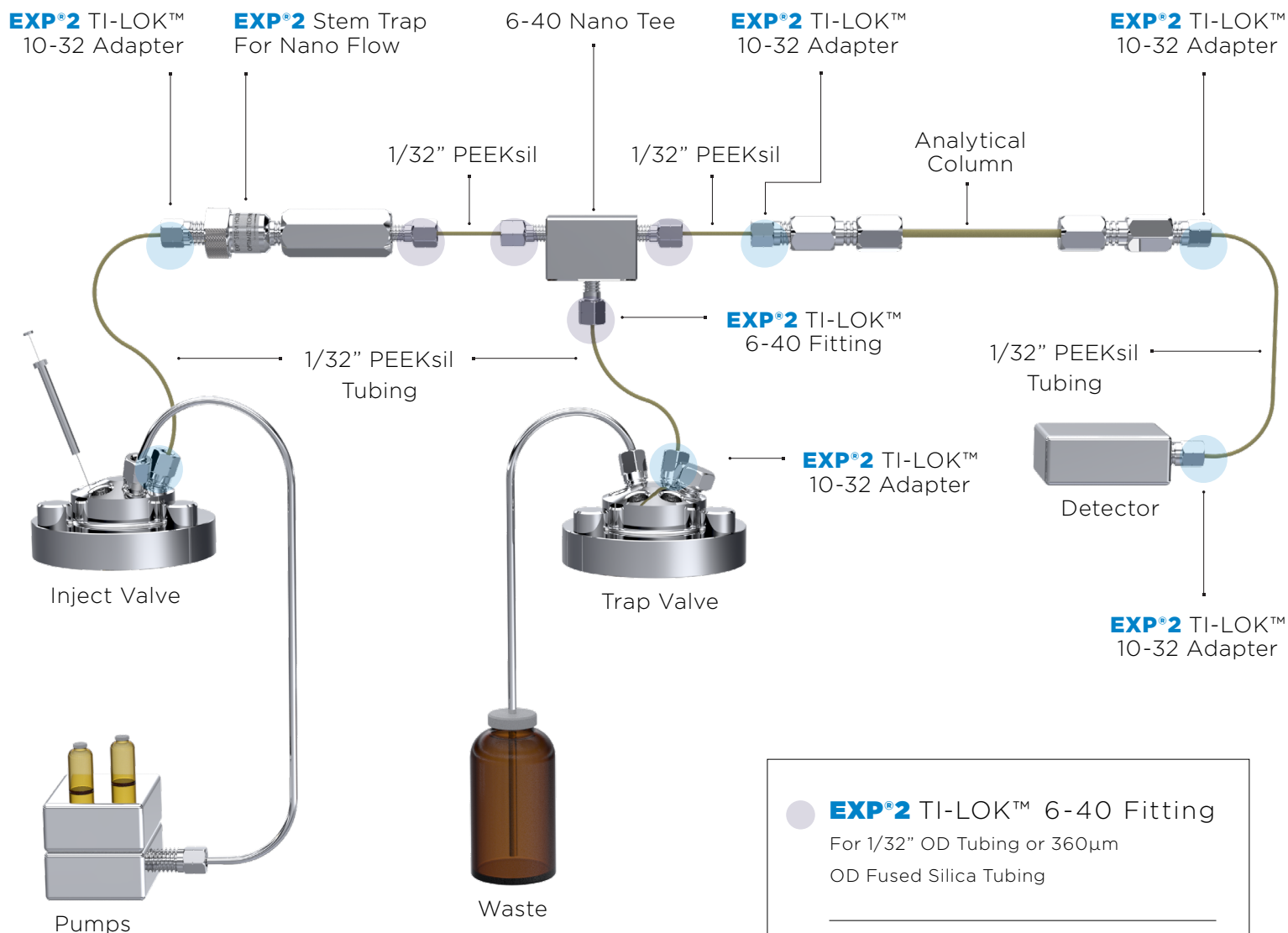


### EXP<sup>®</sup>2 TI-LOK<sup>™</sup> 6-40 Fitting



### EXP<sup>®</sup>2 TI-LOK<sup>™</sup> 10-32 Adapter

# SINGLE PUMP CAPILLARY TRAPPING APPLICATION USING **EXP®2** TI-LOK™ FITTINGS AND ADAPTERS



For more applications such as sample loops, fitting kits and packed capillary columns, please contact Optimize for more information.



# SIMPLIFY YOUR UHPLC CONNECTIONS

## ADVANTAGES OF **EXP<sup>®</sup> 2** TI-LOK<sup>™</sup> FITTINGS AND ADAPTERS

- Hand-tight up to 20,000+ psi (1,400+ bar)
- Titanium nut with integral PEEK ferrule
- One-piece fitting / adapter design (no loose ferrules)
- Intended for many repeat uses
- No need to cut tubing to replace a swaged ferrule
- Simple and versatile - can be used in all LC applications

- Robust design with superior corrosion resistance
- Auto-adjusting, zero-dead-volume connection
- Releases tubing for easy repositioning into different ports
- Compatible with ALL tubing materials
- Cost efficient solution with replaceable components
- Perfect for standard or nano UHPLC and UHPLC/MS



dichrom GmbH  
Reiherhorst 8  
D-45721 Haltern am See  
info@dichrom.com

Tel. +49(0)2364-95294-25  
Fax +49(0)2364-95294-28  
[www.dichrom.com](http://www.dichrom.com)  
[www.dichrom-shop.com](http://www.dichrom-shop.com)

[WWW.OPTIMIZE TECH.COM](http://WWW.OPTIMIZE TECH.COM)

[INFO@OPTIMIZE TECH.COM](mailto:INFO@OPTIMIZE TECH.COM)