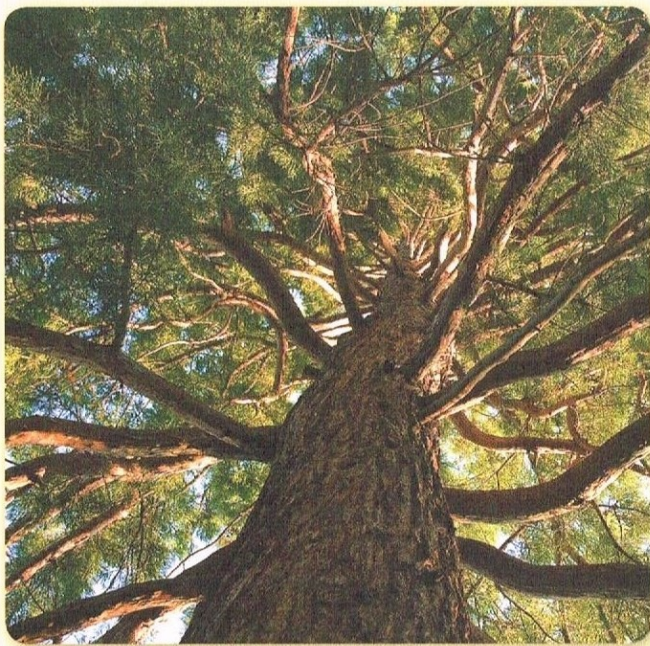


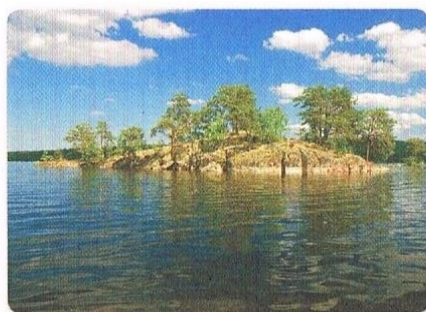
HONKAMAJAT
THE SCANDINAVIAN COLLECTION





Fresh and clean air, peace of mind, regeneration and strength. In a log house you can feel at home, just like in the northern pine forest.





HONKAMAJAT THE SCANDINAVIAN COLLECTION

Connect your home with nature

A log house from Honkamajat will give you a sense of being in a pine forest. A log house has a breathable structure, allowing it to balance variations in temperature and humidity, ensuring that the indoor air is fresh, clean and healthy.

Manufacturing a log house is environmentally friendly. Wood is the most natural eco-friendly building material available. The whole manufacturing process of a log house uses significantly less energy than that used in the manufacturing process utilizing any other house building material. In addition, the by-product from manufacturing a log house can produce more energy than the manufacturing process uses energy.

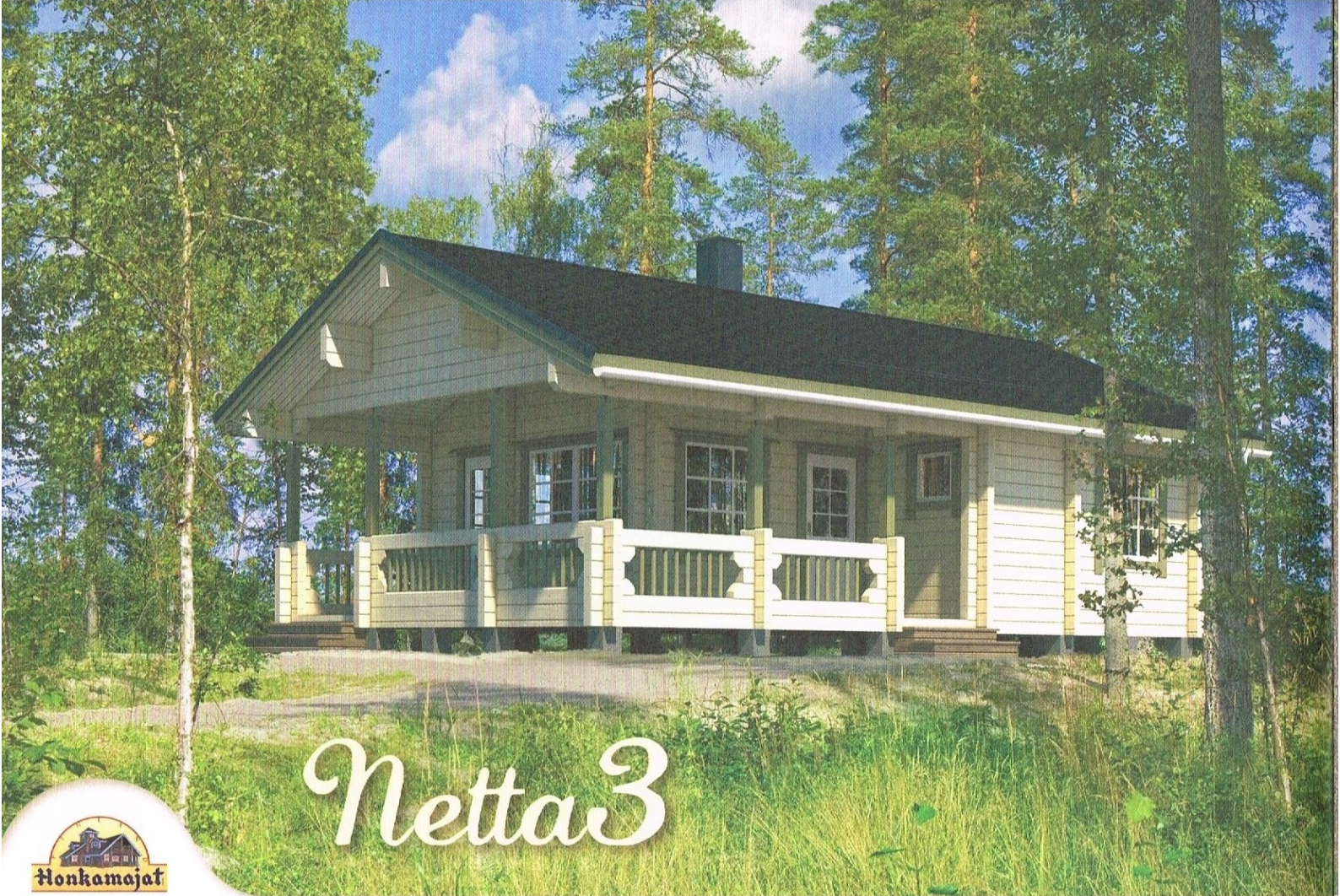
Log walls also provide good thermal insulation which in tandem with modern planning solutions are a basis for energy efficiency. If a log house is correctly installed and well maintained, it can last for centuries. A log house is an investment for generations to come.

A log house – for your needs

An individual home, based on your requirements. Familiarize yourself with our models in order to consider which is the best solution for your need. Honkamajat will then manufacture a log house for you, customized to your specifications. Our delivery times are short – you will be able to begin building the house within a few weeks of ordering.

CONTENTS

Netta3	4
Ronja	5
Frida	6
Wilma	7
Trine	8
Britt	10
Ellen	11
Beate	12
Stina	13
Tilda	14
Honkamajat	15
Contact information	16



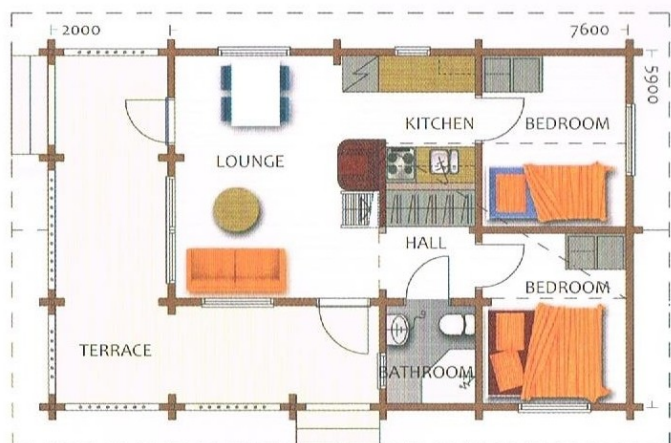
Netta 3



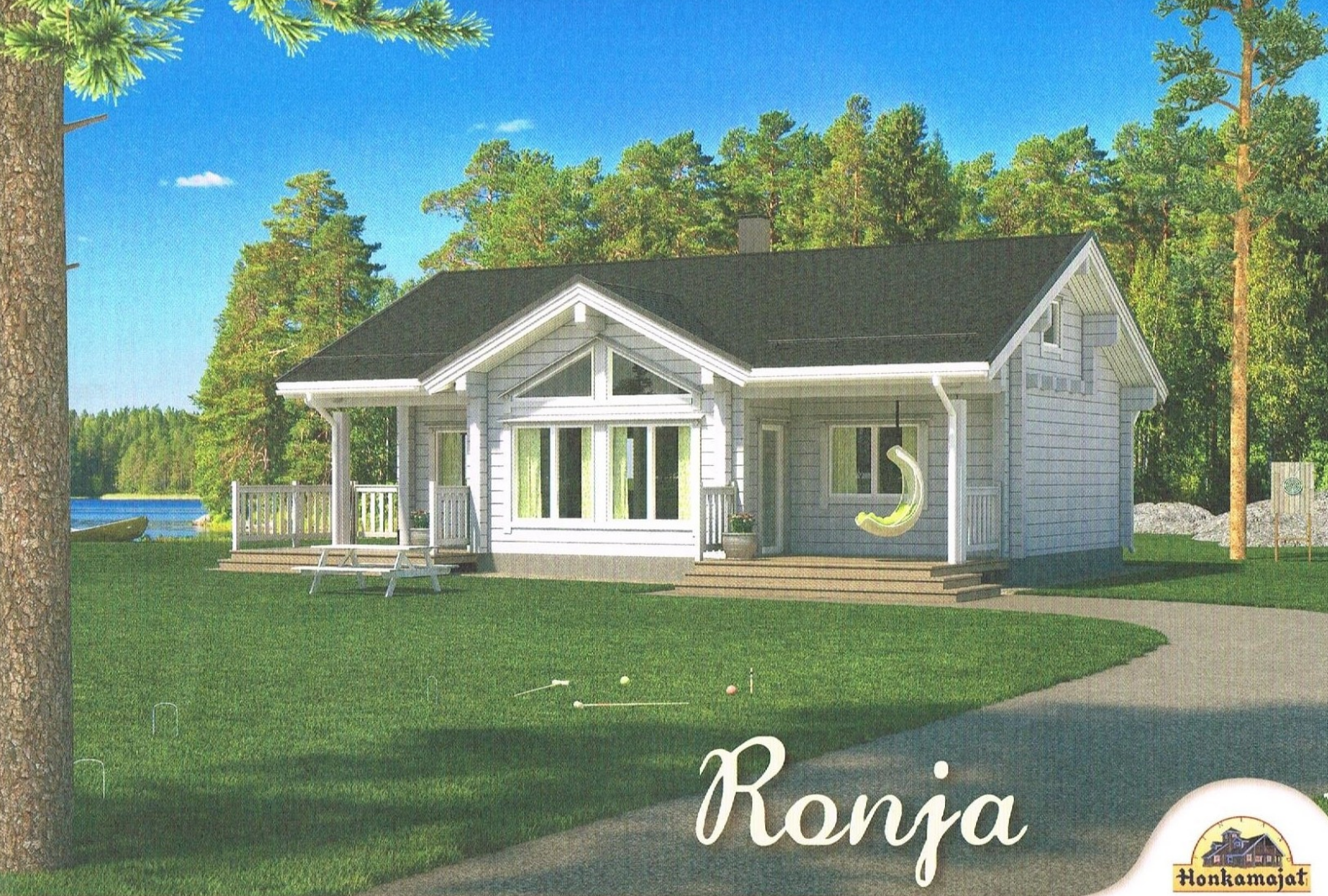
A variant of the popular Netta model includes a lounge, two bedrooms, a bathroom and a loft which provides extra space. A spacious covered terrace on two sides of the house increases the available living area.

Floor area	40.3m ²
Living area	37.2m ²
Loft	10.6m ²
Terrace	18.5m ²

Healthy living, in a natural way!

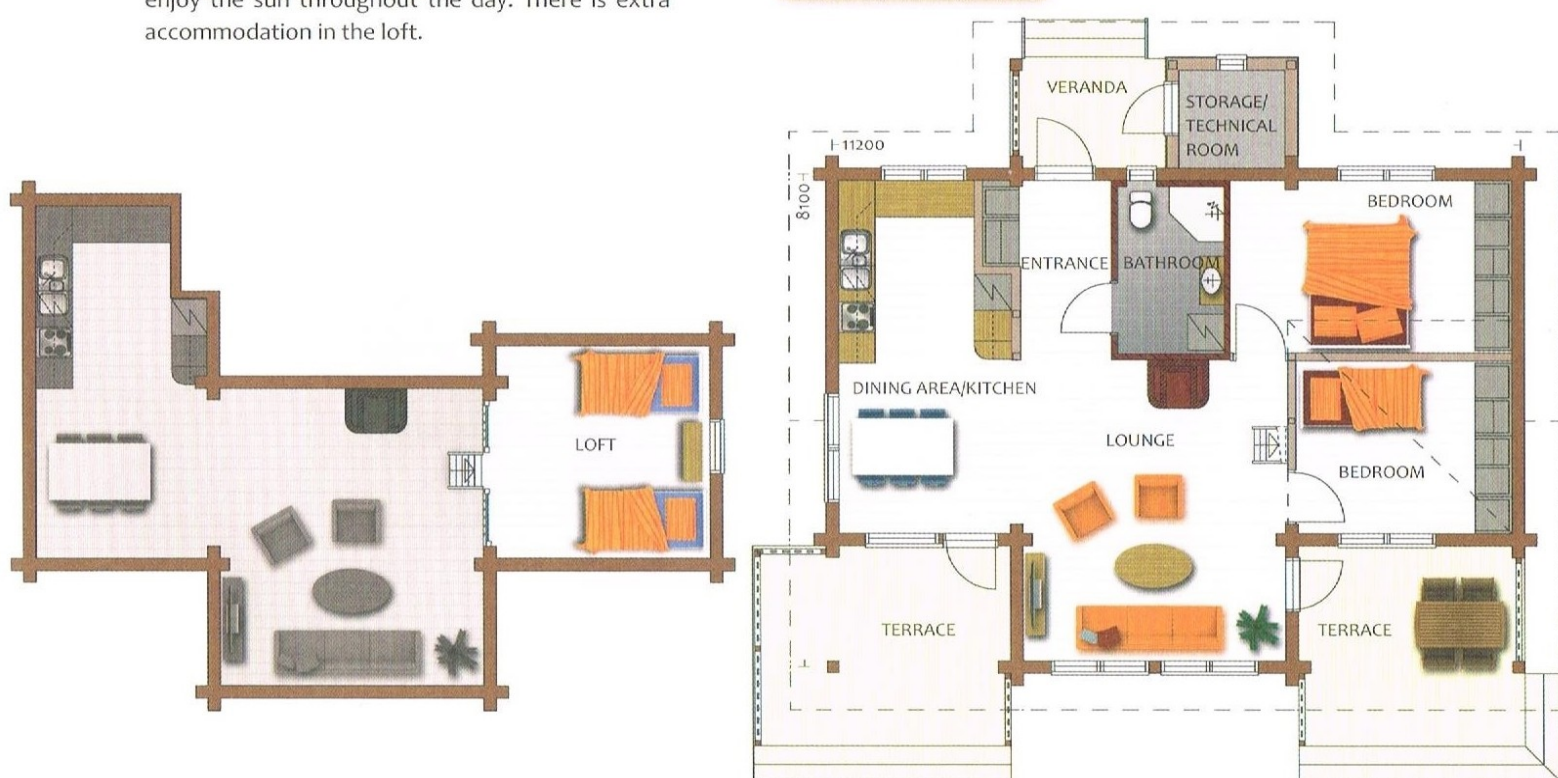


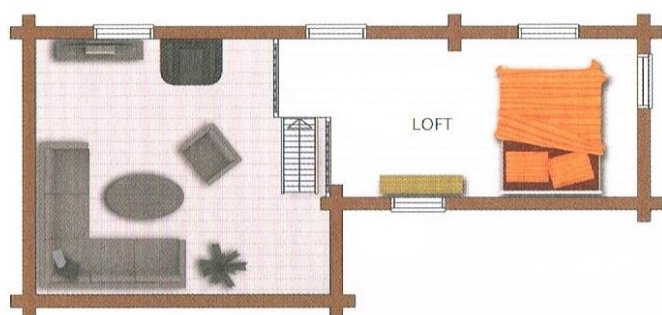
1:125



An extremely versatile and spacious holiday home with a bright lounge and a large kitchen. Next to the kitchen is a dining area. There is plenty of storage space in the large bedrooms, likewise by the entrance. The covered terraces look out in two directions, giving you more opportunities to enjoy the sun throughout the day. There is extra accommodation in the loft.

Floor area	80m ²
Living area	72.5m ²
Loft	12.2m ²
Terraces	30.5m ²
Storage/ technical room	4m ²

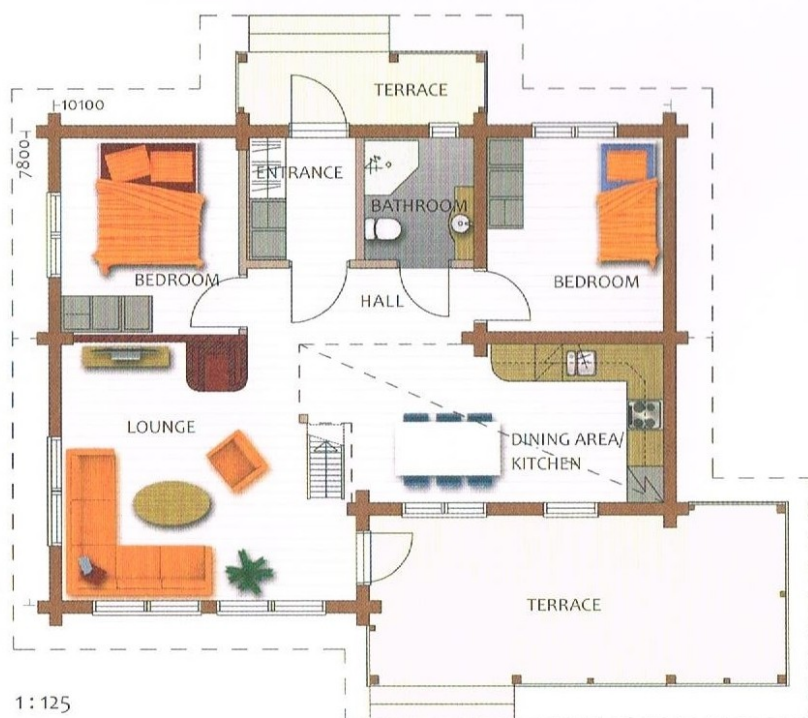


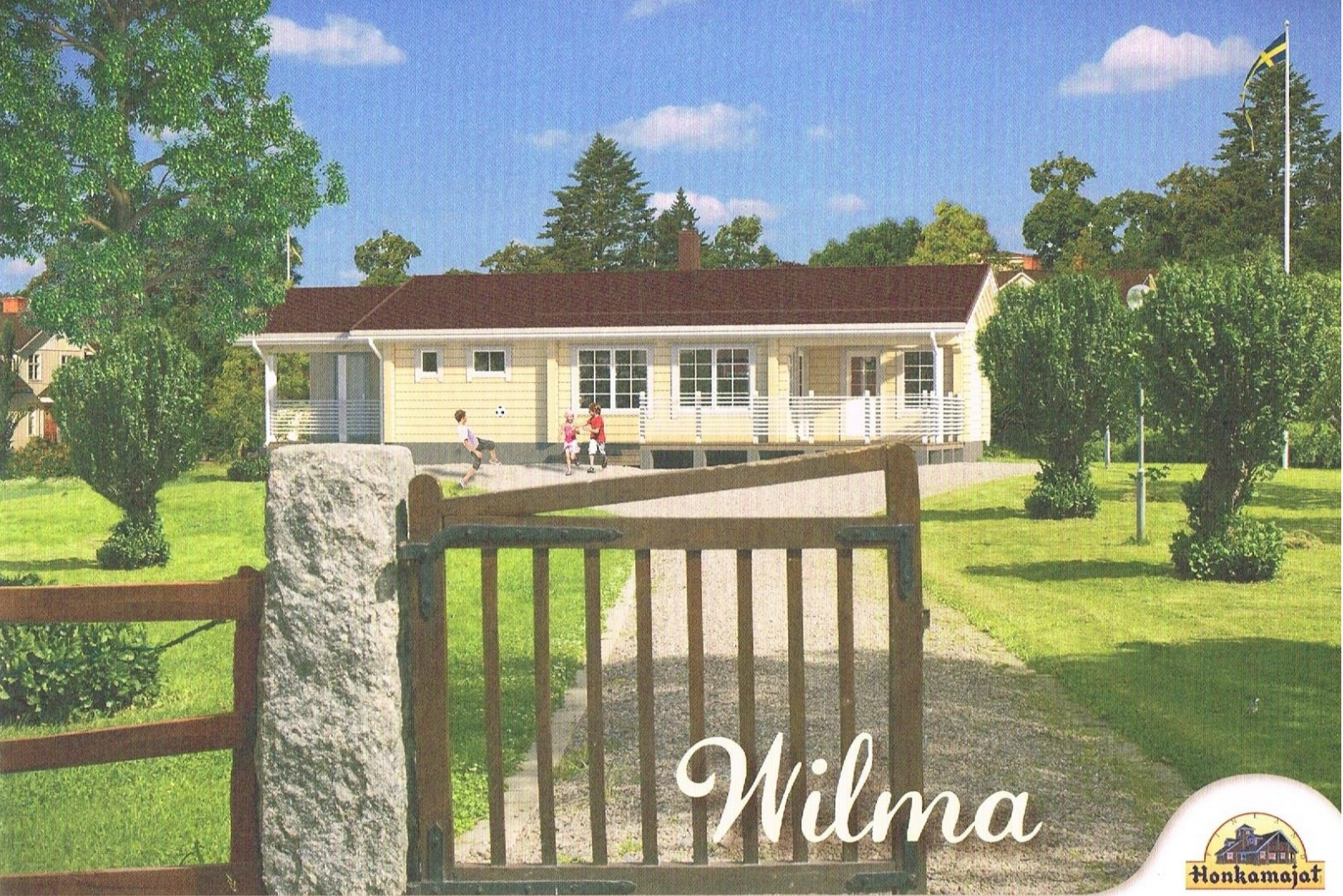


A stylish villa with a high and open lounge together with a large kitchen/dining area. Separated bedrooms and a spacious and bright loft provides extra accommodation. This model also includes a large, covered terrace, which connects the indoor and outdoor areas and offers excellent additional space, e.g. for an *Al Fresco* dining area.

Floor area I	74.4m ²
Floor area II	17.4m ²
Floor area total	91.8m ²
Living area I	67.1m ²
Living area II	14.4m ²
Living area total	81.5m ²
Terraces	24.2m ²

A log house against climate change.



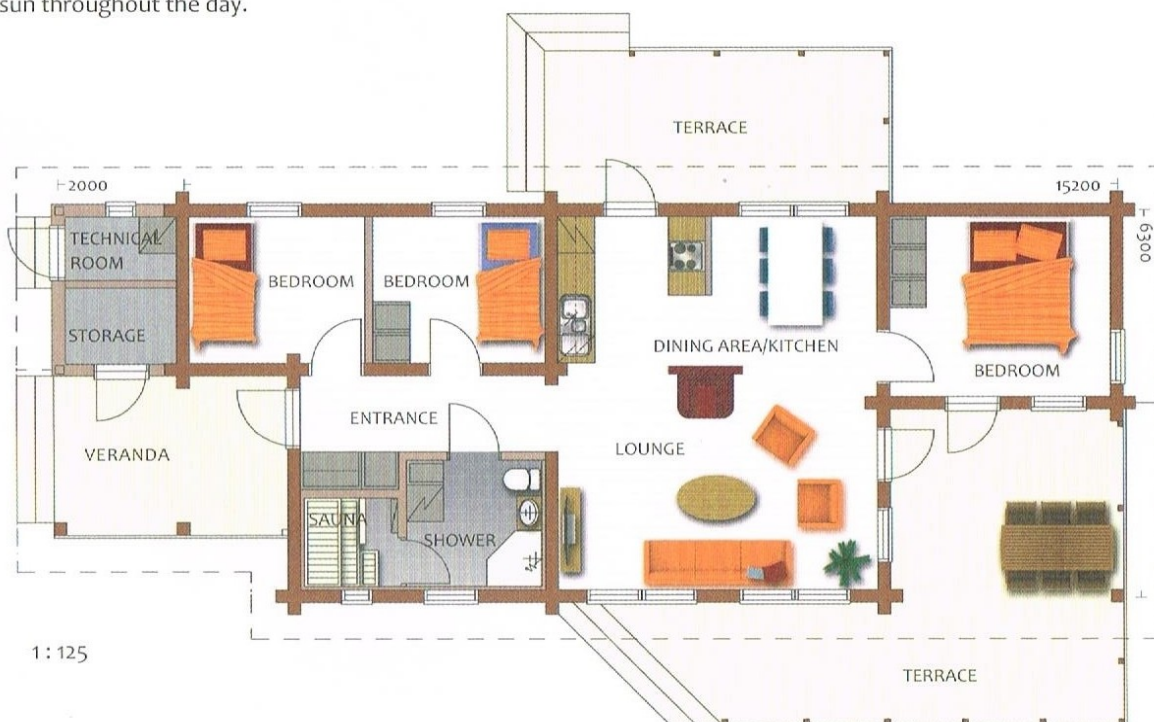


Wilma

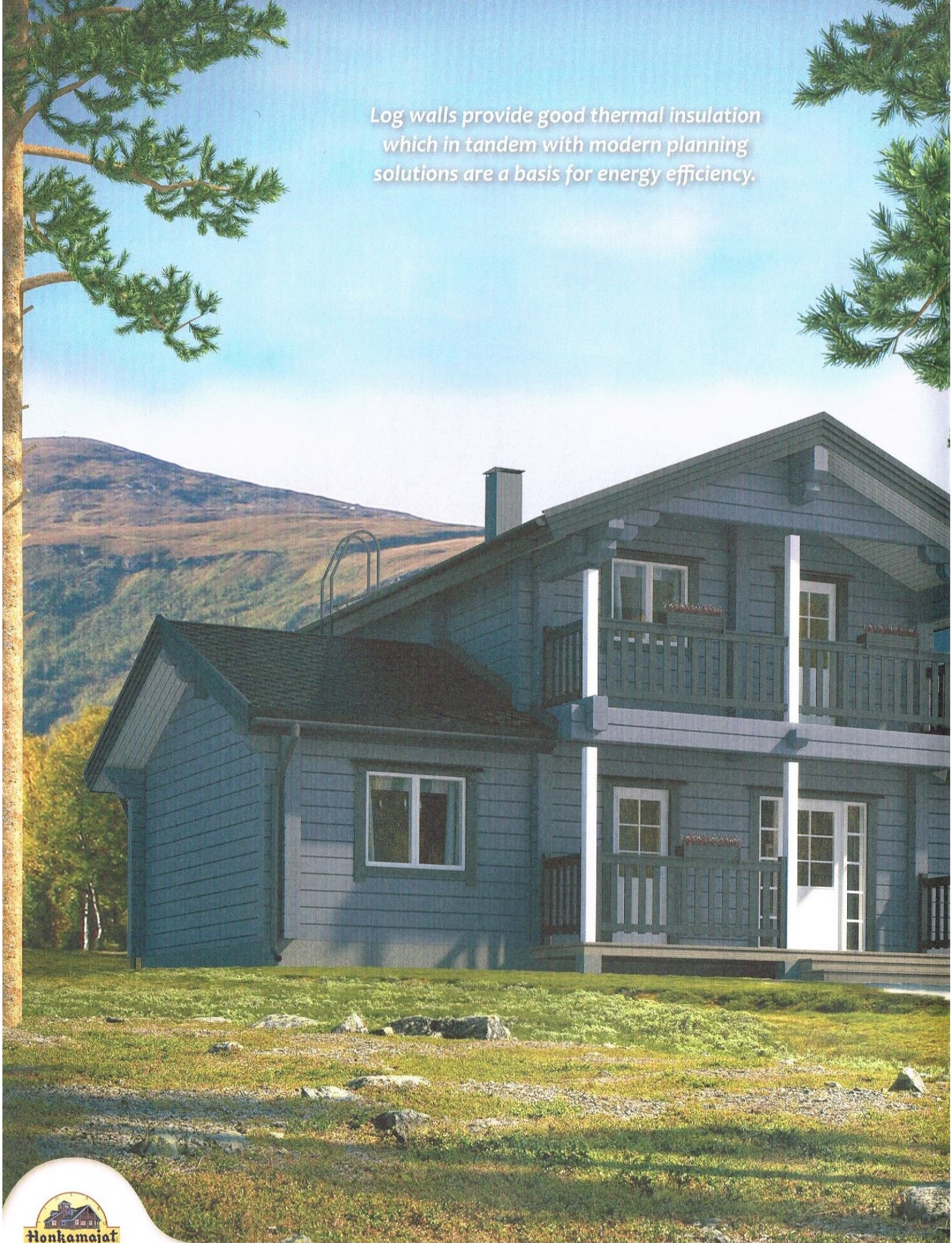


This holiday home includes a spacious lounge combined with kitchen and dining area. The model includes two smaller bedrooms and a peaceful master bedroom with a direct access to the terrace. There are several terrace areas in this building so you can enjoy the sun throughout the day.

Floor area	81.6m ²
Living area	72.7m ²
Terraces	51.2m ²
Storage/ technical room	5.6m ²



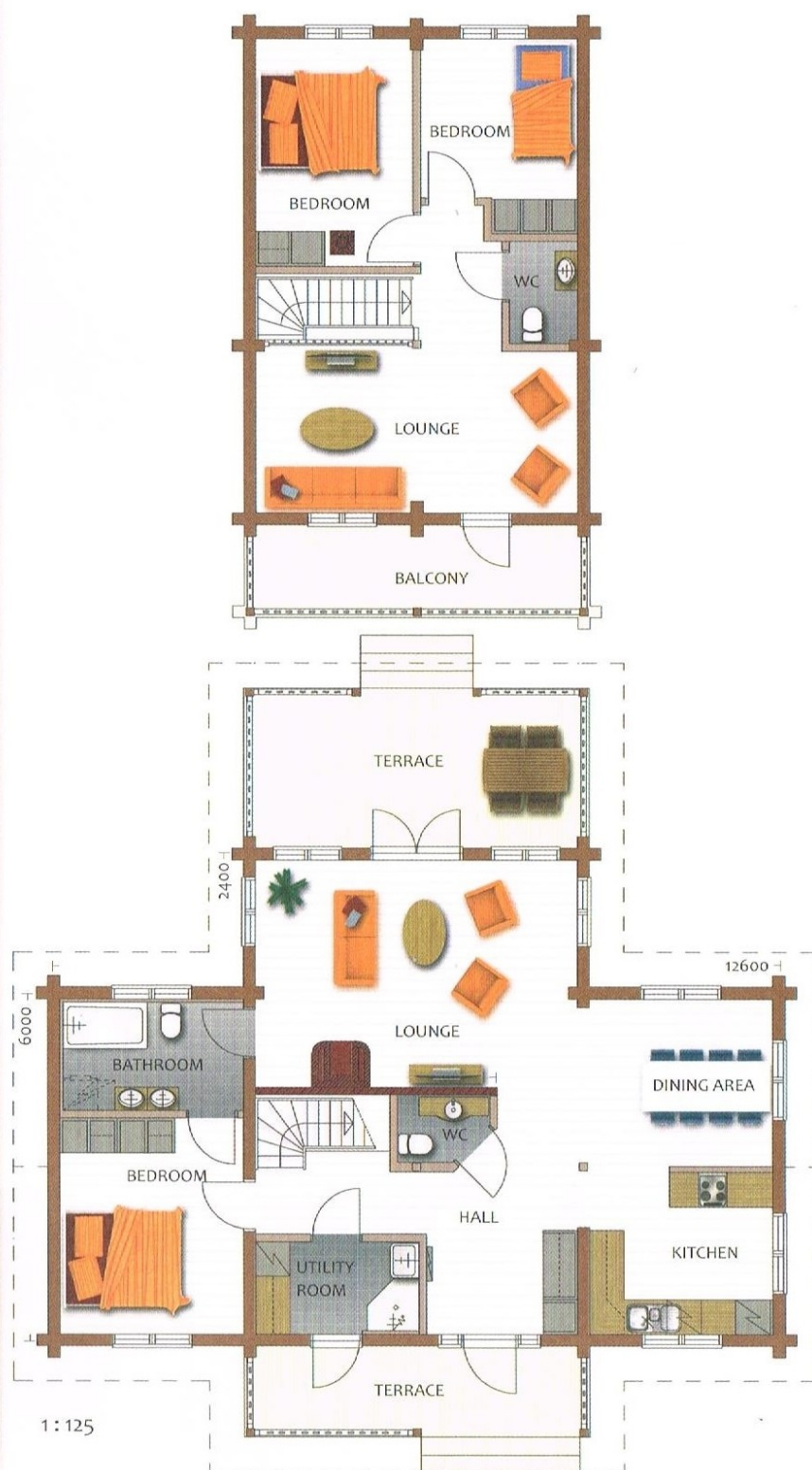
*Log walls provide good thermal insulation
which in tandem with modern planning
solutions are a basis for energy efficiency.*



Trine

An extremely versatile and impressive Scandinavian style detached dwelling. Downstairs there are well-planned and spacious common rooms. The space upstairs can easily be modified. The large and covered terrace by the lounge provides additional space. The separate utility room by the hall makes everyday life easier. This model is one of the most popular in our range!

Floor area I	93.9m ²
Floor area II	48.7m ²
Floor area total	142.6m ²
Living area I	85.3m ²
Living area II	42.8m ²
Living area total	128.1m ²
Terraces	26.4m ²
Balcony	9.6m ²





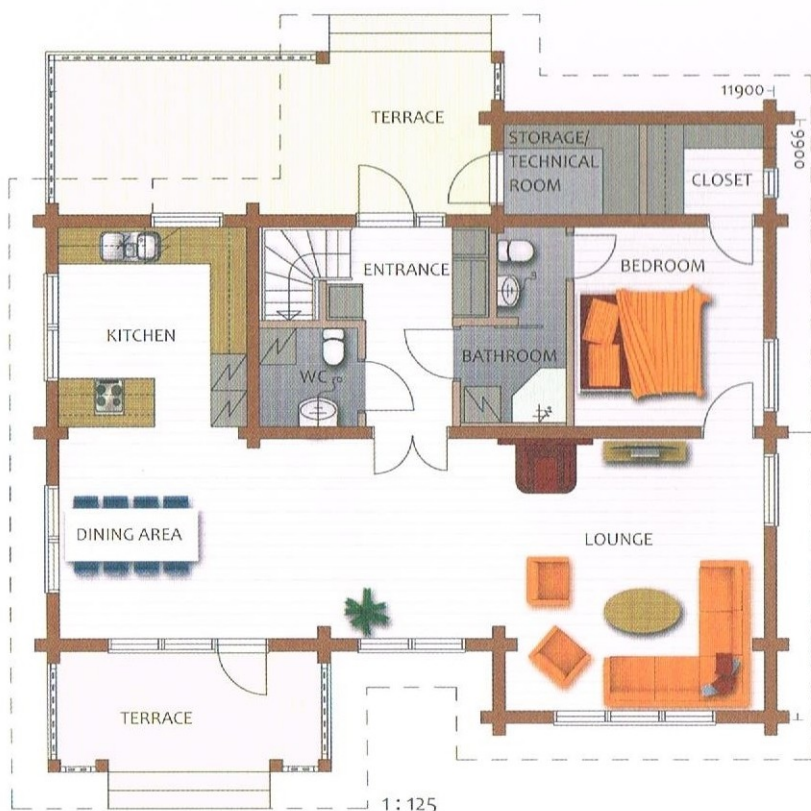
Britt

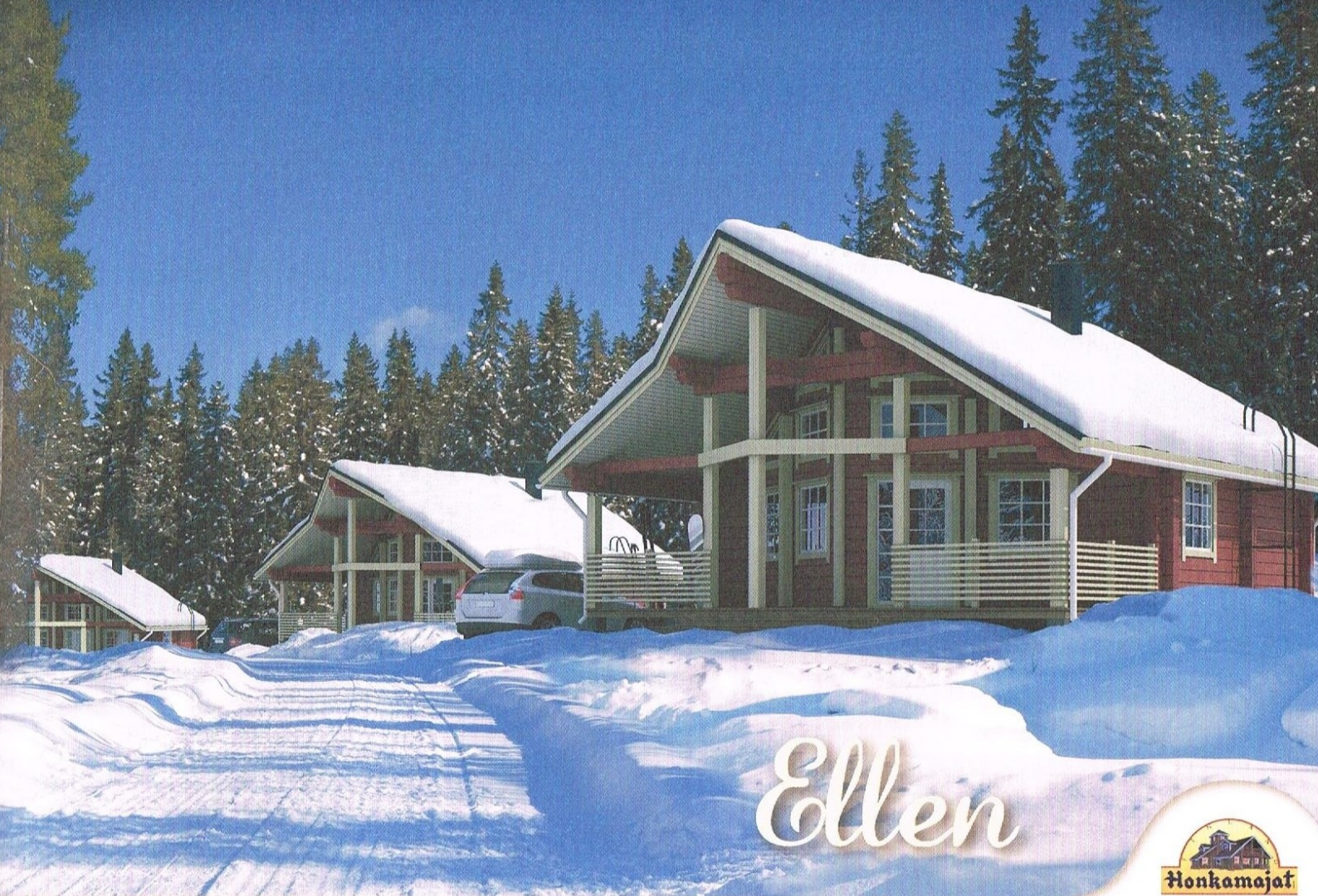


If a log house is correctly installed and well maintained, it can last for centuries.

A classic and impressive two storey villa. Access upstairs from the entrance area allows for peace and quiet, so that life in the spacious lounge is not disturbed. Good storage space in the master bedroom together with a direct access into the bathroom provides you with everyday luxury. An architecturally stylized model.

Floor area I	100.9m ²
Floor area II	33.9m ²
Floor area total	134.8m ²
Living area I	91.9m ²
Living area II	26.7m ²
Living area total	118.6m ²
Terraces	29.6m ²
Balcony	9.4m ²



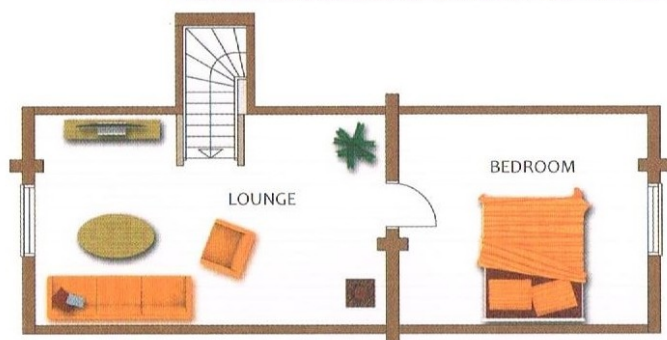


Floor area I	68.2m ²
Floor area II	9m ²
Floor area total	77.2m ²
Living area I	61.6m ²
Living area II	9m ²
Living area total	70.6m ²
Terraces	32.8m ²

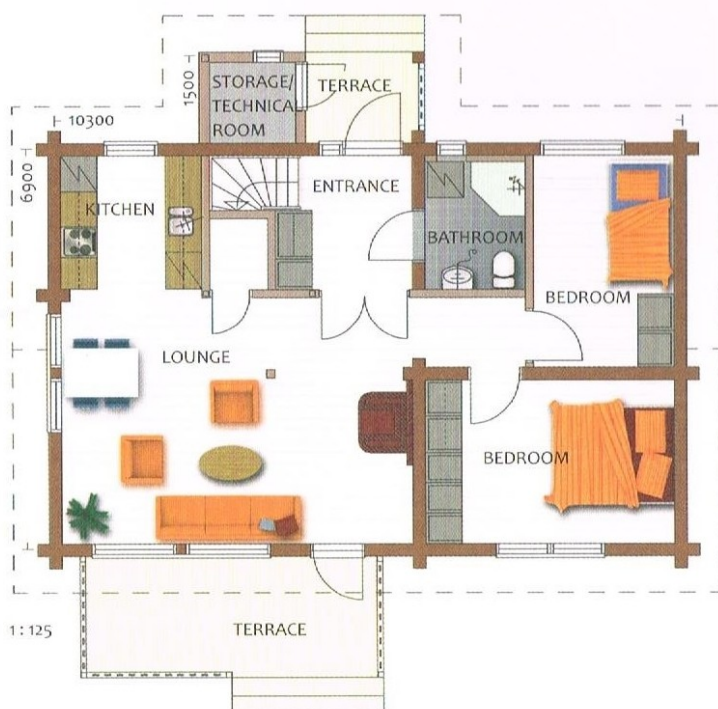
An impressive holiday home with a well-planned and versatile solution, whether by a traditional lake or a seaside location or at a ski resort. A stylish lounge, kitchen and dining area along with a bright, open-terrace. Open views from the loft provide a sense of a large double-sized space!



1:125



This model, which represents the plain Scandinavian style, includes in compact format everything that is needed. The large terrace provides extra space. The direct access upstairs suits those who want some peace and privacy.



Floor area I	71.5m ²
Floor area II	28.5m ²
Floor area total	100m ²
Living area I	64.5m ²
Living area II	27.5m ²
Living area total	92m ²
Terraces	13m ²
Storage/ technical room	1.9m ²

You can sleep well and breathe easily in a log house.



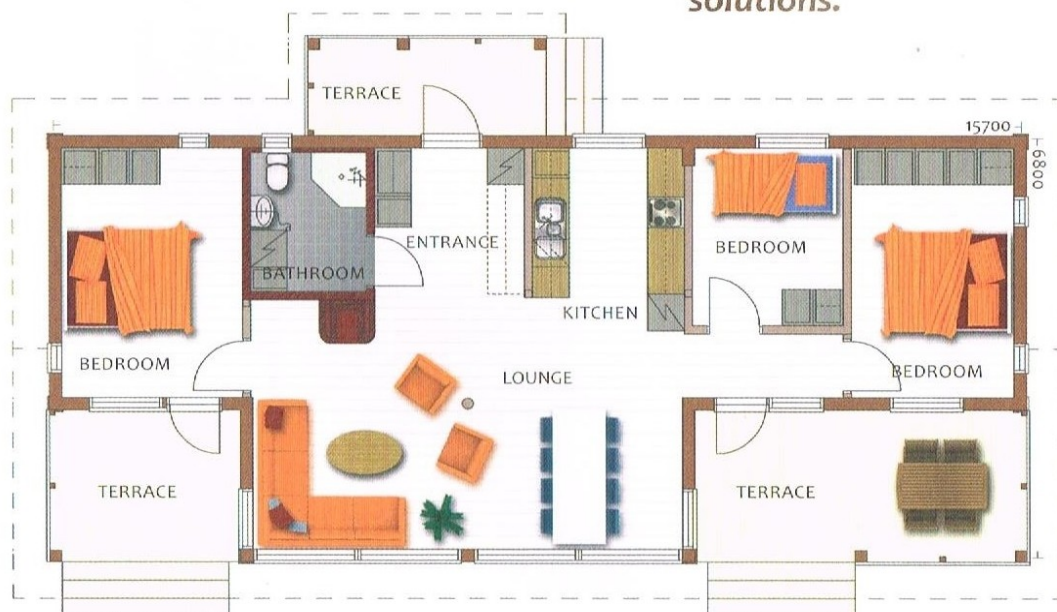
Stina



This is a model which can easily be modified for a range of purposes. It is suitable for both coastal and ski areas. This model includes a spacious, open-plan living solution and large bedrooms. The large windows in the lounge provide magnificent views and bring the landscape inside the house!

Floor area	90m ²
Living area	81m ²
Terraces	27.5m ²

Due to its durable timber structure, all Honkamajat house models are well suited for modification and enable customized solutions.





Tilda



Floor area	90m ²
Living area	82m ²
Loft	12.2m ²
Terraces	19.3m ²

In this holiday home/small house, which gives a sense of being larger than its actual size, everything essential is included. Rooms are efficiently utilized and the utility room makes everyday life easier. The spacious bedrooms are located away from the living area and the loft provides extra space.



A log house is pleasantly cool in warm weather, yet cozily warm in cold weather.



QUALITY, EFFICIENCY AND THE LATEST TECHNOLOGY

Honkamajat is renowned for prompt deliveries and excellent quality, based on the close-grained pinewood which has grown in northern conditions. Other characteristics of the company are customer-centric planning, good workmanship, qualified personnel and reliable cooperative partners.

The Tiivishirsi design structure ensures excellent tightness of the log walls. Honkamajat timber structures have gained outstanding test results.

High-quality and efficient production requires both a modern planning system and CAD/CAM controlled production equipment. These enable to execute very precise constructions, based exactly on drawings.

A log house from Honkamajat is individual and customized.



Briefly about Honkamajat

- established in 1963, located in Oulu
- main products are detached houses and recreational buildings, but also public buildings
- values traditions, pioneer in the latest log building technology
- over 95% of production is exported, to over 30 countries
- committed to realizing customer's dreams of ecological and healthy housing in different parts of the world
- The Strongest in Finland certificate, Successful company certificate (Menestyjä-sertifikaatti) and a AAA credit rating





Distributor:

PATE . A . S . B .
ARDENNES STRUCTURES BOIS
Zone Artisanale
08160 FLIZE
Tél : 06.08.71.17.11
mail : asb.ardennes@wanadoo.fr
www.ardennesstructuresbois.fr

HEAD OFFICE AND FACTORY
OY HONKAMAJAT FINLAND LTD

Veistämötie 6
90620 Oulu, Finland
Telephone +358 8 563 1100
Fax +358 8 563 1110
honkamajat@honkamajat.fi
www.honkamajat.fi



Minimize your
carbon footprint!

