

INERT DETONATORS & BLASTING CAPS



Inert Non-Electric Detonator / Blasting Cap (Deluxe)
Item# : OTA-322

Inert Non-Electric Detonator / Blasting Cap (Deluxe)
50 pc Bulk Pack
Item# : OTA-343



Inert Non-Electric Detonator / Blasting Cap (Deluxe)
10 pc (In Storage Case)
Item# : OTA-302

Inert Non-Electric Detonator / Blasting Cap (Deluxe, Copper)
Item# : OTA-302C



ALL PRODUCTS ARE PROUDLY MADE IN THE USA.

BE SURE TO VIEW OUR GSA LISTING ON "GSA EBUY" OR "GSA ADVANTAGE!"



Inert M-32 Blasting Cap Assembly
Item# : OTA-M32

Description :

The M32 Dummy Cap is an inert assembly, consisting of a 7.5 foot length of inert Time Fuse, environmentally sealed at one end and with a Dummy Cap assembly attached at the other end. The fuse of the complete assembly is marked with five (5) bands, 18 inches apart, starting from the dummy cap end. The bands are 0.25 inch wide and covering as a minimum 60 degrees of the fuse's circumference. The color of the bands is black.

Inert Non-Electric Shock Tube Blasting Cap Detonator Assembly
Item# : OTA-304

Description :

12 meters of Inert Simulated Shock Tube with a Deluxe Blasting Cap crimped on one end



Inert M-60 Fuse Ignitor Assembly
Item# : OTA-438A

Description :

A Replica M-60 Fuse Ignitor with 5 ft of Inert Simulated Time Fuse and an Inert Blasting Cap crimped on the end

Inert Non-Electric Shock Tube Blasting Cap Detonator Assembly (Assorted Colors)
Item# : OTA-NO91

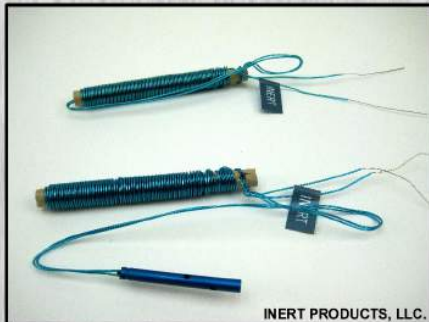
Description :

9 meters of replica shock tube with an inert detonator crimped on one end



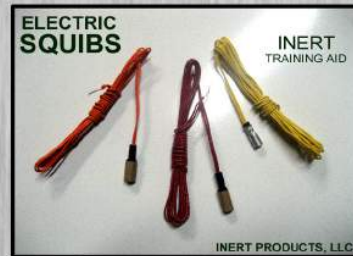
INERT DETONATORS & BLASTING CAPS

Inert Electric Detonator / Blasting Cap Assembly
Item# : OTA-CP1



Inert Mk17 Mod 2 Electric Detonator / Blasting Cap (Blue Anodized)
Item# : OTA-M6A

Inert Electric Squib
Item# : OTA-SQUIB
Each sold separately



Inert M6 Electric Detonator / Blasting Cap (Deluxe)
Item# : OTA-M6
NSN# : 1375-01-6073817

Inert Electric Match (Ematch)
Item# : OTA-304

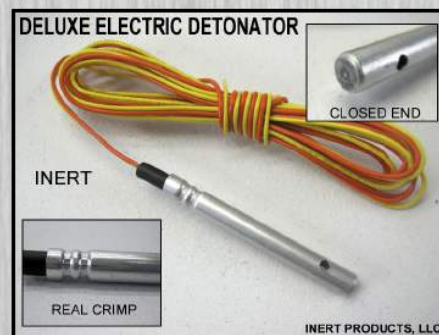


WE HAVE A WIDE VARIETY OF INERT BLASTING CAPS AND DETONATORS THAT ARE WIDELY RECOGNIZED AS THE BEST ON THE MARKET. WE CAN OFFER A SUBSTANTIAL DISCOUNT ON PURCHASES OF 1000 UNITS OR MORE.



Inert Non-Electric Detonator / Blasting Cap (Deluxe)
Crimped on 1.5 ft Time Fuse (Asst Colors)
Item# : OTA-311
 Each sold separately

Inert Electric Detonator / Blasting Cap (Deluxe)
Item# : OTA-323



Inert Electric Detonator / Blasting Cap (Open End, No Holes)
Item# : OTA-301
 Each sold separately

Inert Products EOD Dual Cap Crimper
Item# : OTA-IPCC

Description :

Materials: Hi-Strength Aircraft Quality Aluminum
 Finish: Hard Anodized to RC 50
 Length: 6.8 in. (173mm)
 Width: 1.8 in. (46mm)
 Thickness: 0.35 in. (8.9mm)
 Weight: 3 oz. (0.09 kg)
 Powder Punch Diameter: .25 in. (6.5mm)
 Powder Punch Length: 2.2 in. (56mm)



INERT DETONATING CORD



Inert Simulated Solid Core Detonating Cord
1000 ft Spool (Olive Drab)
Item# : OTA-SC02



Inert Simulated Solid Core Detonating Cord
1000 ft Spool (Red)
Item# : OTA-SC06



Inert Simulated Solid Core Detonating Cord
1000 ft Spool (Bronze)
Item# : OTA-SC04



Inert Simulated Solid Core Detonating Cord
1000 ft Spool (Orange)
Item# : OTA-SC012



Inert Simulated Solid Core Detonating Cord
1000 ft Spool (Yellow)
Item# : OTA-SC08



Inert Simulated Solid Core Detonating Cord
1000 ft Spool (Pink)
Item# : OTA-SC010

OUR INERT DET CORD IS .206 IN DIAMETER, FITS SNUGLY IN A STANDARD BLASTING CAP, AND IS AVAILABLE IN A VARIETY OF COLORS TO MEET ANY MILITARY OR CIVILIAN TRAINING REQUIREMENTS.



**Inert Simulated Solid Core Detonating Cord
100 ft Coil (Olive Drab)
Item# : OTA-SC01**



**Inert Simulated Solid Core Detonating Cord
100 ft Coil (Red)
Item# : OTA-SC05**

**Inert Simulated Solid Core Detonating Cord
100 ft Coil (Bronze)
Item# : OTA-SC03**



**Inert Simulated Solid Core Detonating Cord
100 ft Coil (Orange)
Item# : OTA-SC011**

**Inert Simulated Solid Core Detonating Cord
100 ft Coil (Yellow)
Item# : OTA-SC07**



**Inert Simulated Solid Core Detonating Cord
100 ft Coil (Pink)
Item# : OTA-SC09**

INERT TIME FUSE



**Inert Simulated Solid Core Time Fuse
1000 ft Spool (Olive Drab)
Item# : OTA-SC98**

**Inert Simulated Solid Core Time Fuse
1000 ft Spool (Red)
Item# : OTA-SC94**



**Inert Simulated Solid Core Time Fuse
1000 ft Spool (Bronze)
Item# : OTA-SC92**

**Inert Simulated Solid Core Time Fuse
1000 ft Spool (Yellow)
Item# : OTA-SC96**



OUR INERT TIME FUSE IS .206 IN DIAMETER, FITS SNUGLY IN A STANDARD BLASTING CAP, AND IS AVAILABLE IN A VARIETY OF COLORS TO MEET ANY MILITARY OR CIVILIAN TRAINING REQUIREMENTS.



**Inert Simulated Solid Core Time Fuse
100 ft Coil (Olive Drab)
Item# : OTA-SC97**



**Inert Simulated Solid Core Time Fuse
100 ft Coil (Red)
Item# : OTA-SC93**



**Inert Simulated Solid Core Time Fuse
100 ft Coil (Bronze)
Item# : OTA-SC91**

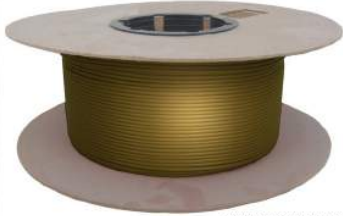


**Inert Simulated Solid Core Time Fuse
100 ft Coil (Yellow)
Item# : OTA-SC95**

INERT SHOCK TUBE

SHOCK TUBE

INERT, 1000 ft. SPOOL

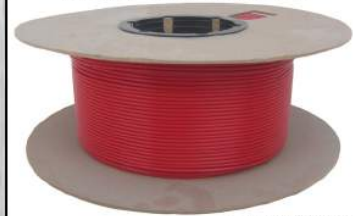


© INERT PRODUCTS, LLC

Inert Simulated Shock Tube
1000 ft Spool (Bronze)
Item# : OTA-ST11

SHOCK TUBE

INERT, 1000 ft. SPOOL

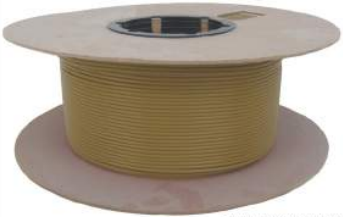


© INERT PRODUCTS, LLC

Inert Simulated Shock Tube
1000 ft Spool (Red)
Item# : OTA-ST06

SHOCK TUBE

INERT, 1000 ft. SPOOL

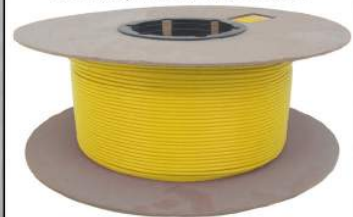


© INERT PRODUCTS, LLC

Inert Simulated Shock Tube
1000 ft Spool (Tan)
Item# : OTA-ST10

SHOCK TUBE

INERT, 1000 ft. SPOOL



© INERT PRODUCTS, LLC

Inert Simulated Shock Tube
1000 ft Spool (Yellow)
Item# : OTA-ST07

SHOCK TUBE

INERT, 1000 ft. SPOOL



© INERT PRODUCTS, LLC

Inert Simulated Shock Tube
1000 ft Spool (Clear)
Item# : OTA-ST05

OUR INERT SHOCK TUBE IS AVAILABLE IN A VARIETY OF COLORS TO MEET ANY MILITARY OR CIVILIAN TRAINING REQUIREMENTS.



Inert Simulated Shock Tube
100 ft Coil (Bronze)
Item# : OTA-ST15



Inert Simulated Shock Tube
100 ft Coil (Red)
Item# : OTA-ST12



Inert Simulated Shock Tube
100 ft Coil (Tan)
Item# : OTA-ST14



Inert Simulated Shock Tube
100 ft Coil (Yellow)
Item# : OTA-ST07



Inert Simulated Shock Tube
100 ft Coil (Clear)
Item# : OTA-ST11