



DESCRIPTION

Visual level indicator

MATERIALS

Transparent part: Trogamid T
Anti-shock protection: Painted steel
Fixing bolts: Zinc plated steel
Seals: NBR Nitrile (FKM Fluoroelastomer on request)

Double scale thermometer (Celsius and Fahrenheit)
option available.
Tightening torque for the fixing bolts 10 Nm.

PRESSURE

Max pressure 100 kPa (1 bar)

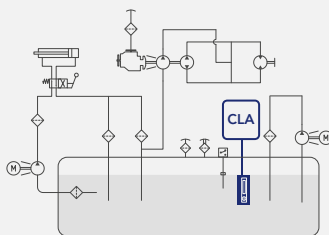
WORKING TEMPERATURE

From -20°C to +90°C

COMPATIBILITY

Full with fluids HH-HL-HM-HV-HTG (according to ISO 6743/4).
For fluids different than the above mentioned, please contact
our Customer Service.

HYDRAULIC DIAGRAM



Is this datasheet the latest release? Please check on our website.

ORDERING AND OPTION CHART

C	L	A	COMPLETE FILTER FAMILY		
			SIZE & LENGTH		
			11	12	13
			M CONNECTION TYPE		
			M	M	M
			CONNECTION SIZE		
			10 = M10	10	10
			12 = M12	12	12
			N SEALS		
			N = NBR Nitrile	N	N
			F = FKM Fluoroelastomer	F	F
			ACCESSORIES		
			W = without	W	W
			T = with thermometer	T	T

DIMENSIONS

	H1	H2	H3	D
CLA11M10NW	108	76	32	M10
CLA11M10NT	108	76	32	M10
CLA12M12NW	160	127	78	M12
CLA12M12NT	160	127	78	M12
CLA13M12NW	286	254	202	M12
CLA13M12NT	286	254	202	M12

