



UOW

OFF-LINE FILTERS

DESCRIPTION

Portable filling and filtration unit with green element
Inlet and Outlet
flexible hose, 2 m long with rigid end 0,5 m long
“Y” type filter for pump protection
Gear pump 40 l/min with inbuilt
1 MPa (10 bar) relief valve
Electric motor
three phase 380V - 0,75 kW
1450 rpm - IP54
Double handle for easy
and safe transportation
Total weight 50 kg

FLOW RATE

Qmax 40 l/min

HOW IT WORKS

The mobile filtration unit is used for cleaning the fluid off line, for the transfer, filling and topping up of the oil tank and for any roll-off operation.

The UOW mobile off-line filtration unit filters hydraulic fluid at low-pressure with the aid of a self-contained pump, motor and filter.

The construction design is compact and user-friendly, and guarantees high filtration performances and long life filter element.

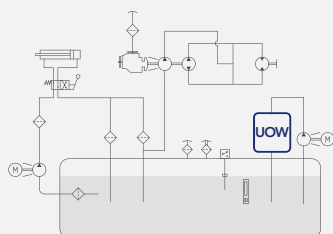
The oil returning to the tank-reservoir from the return line is filtered by the UOW unit, reducing drastically the “clean-up time.”

The filter can be fitted with a visual or electrical clogging indicator, also of differential type. The filter element is designed to meet the most demanding requirements of respect for the environment and reduction of polluting components of the hydraulic system. The filter element, having a wide filtration area and excellent efficiency features, is normally available with FormulaUFI. MICRON, from 5 to 21 $\mu\text{m(c)}$ ($\text{Bx} > 1.000$) and FormulaUFI.H2O.

The mobile filtration unit includes a detailed use and maintenance instruction manual, that is available on our website in the Download section.

Filter element and clogging indicator must be ordered separately

HYDRAULIC DIAGRAM



Is this datasheet the latest release? Please check on our website



UOW

OFF-LINE FILTERS

ORDERING AND OPTION CHART

U	O	W	WHEELED OIL FILTRATION UNIT
0	4	0	NOMINAL FLOW RATE
			040 = 40 l/min
			ELECTRICAL MOTOR TYPE
			T = three phases (standard)
			M = single phase (optional)
0	0	7 5	NOMINAL POWER
			0075 = 0,75 kW
A	3		VERSION
			A3 = standard version
X	X		ACCESSORIES
			XX = without accessories

Filter element and clogging indicator must be ordered separately
Please refer to the following ordering and option charts

I	R	F	CORELESS FILTER ELEMENT
3	4		SIZE & LENGTH
		N	SEALS
			N = NBR Nitrile
			FormulaUFI MEDIA
			FA = FormulaUFI.MICRON 5 $\mu\text{m}_{(c)}$ $\beta > 1.000$
			FB = FormulaUFI.MICRON 7 $\mu\text{m}_{(c)}$ $\beta > 1.000$
			FC = FormulaUFI.MICRON 12 $\mu\text{m}_{(c)}$ $\beta > 1.000$
			FD = FormulaUFI.MICRON 21 $\mu\text{m}_{(c)}$ $\beta > 1.000$
			WR = FormulaUFI.H ₂ O*
			CLOGGING INDICATOR
			5B = visual differential 130 kPa (1,3 bar)
			6B = electrical differential 130 kPa (1,3 bar)
			7B = indicator 6E with LED
			T0 = elect. diff. 130 kPa (1,3 bar) with thermostat 30°C

* Water removal media, see "Hydro dry" chapter.



FILTER ELEMENT

	AREA (cm ²)					
	A	B	C	Kg	Media F+	Media WR
IRF34	90	120,8	480	0,75	10.810	7.567

