



Security Tech Germany

ABUS TOPSELLER

IN AFRIKA

ULTIMATE SECURITY PADLOCKS THE NEW GRANIT® 37



Advantages

- Body and shackle made from hardened alloy steel
- ABUS-Plus disc cylinder, highest protection against manipulation, 250.000 key differs
- Cylinder inserted from the top: optimum drill and pull resistance
- New Black Granit® coating for even more corrosion resistance
- Cylinder can be re-keyed to match an existing key
- Sea & Sno
- 2 Keys, 1 with LED

Applications

- Container
- Construction
- Gates of all kind
- Prison
- Police
- BTS Station
- Motorbike Chains



THAT IS HOW STRONG THE GRANIT® REALLY IS



- Granit™ Lock placed into car crane fixing!



- Granit™ Hardship - SUV lifted up hold by ABUS Granit™ padlock!



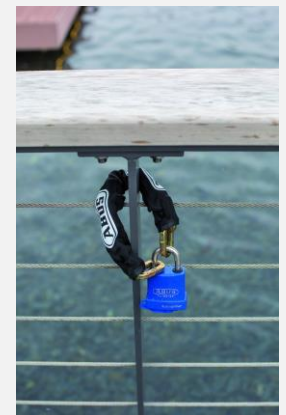
- Car remained lifted for the whole day, during an ABUS event!

NEW 83 SERIES BEST REKEYABLE EVER



NEW 83 SERIES BEST REKEYABLE EVER

- Features are:
 - Z-Bar for 2in1 function: Quickly converts key retaining to non-key retaining w/o tools
 - Rekeyable within seconds
 - Can be keyed into many popular security keyways
 - Different shackle materials and lengths available
 - Easy shackle change in all 83AL's and WP/53
 - Special tools for efficient servicing
 - Acceptance of most KnK cylinders
 - Innovative NANO-plating for outstanding corrosion resistance
 - Available Key It Twice feature
 - Weather boots available for all models



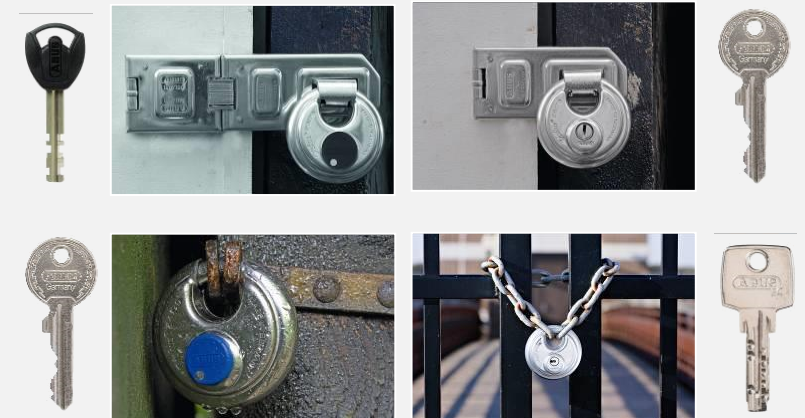
ORIGINAL ABUS DISKUS® FOR ULTIMATE SECURITY



- Advantages
- Original Diskus-design: 360° protection
- Stainless steel – outside & inside
- Diskus Deep-Welding Technology for maximum strength
- Anti-cut plate
- 26: Shackle made from hardened alloy steel
- 20: ABUS-Plus disc cylinder: highest protection against manipulation, 250,000 key differs
- 25: High precision reversible keyway with 8,000 key differs
- 24: 100% Rust-Free: Shackle and all inner components made from stainless steel
- Drilling and pulling resistance
- Made in Germany

Some Applications

- Storage lockers
- Self Storage

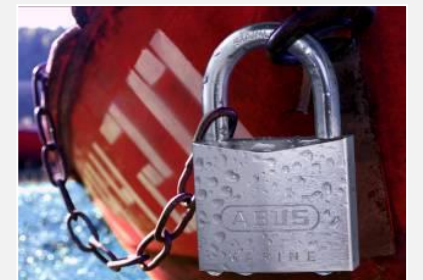


PREMIUM SOLID BRASS PADLOCKS REVERSIBLE DIMPLE KEY / NEVER RUST PADLOCKS / EC75 SERIES

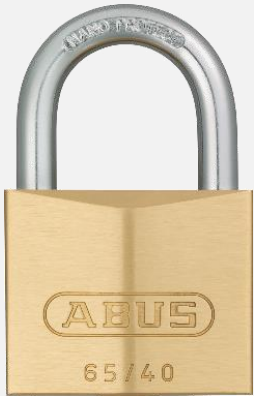


Advantages

- Body made from solid brass; 75IB: pearl nickel plated
- Shackle made from hardened steel with NANO-PROTECT™ plating
- High precision reversible keyway with up to 168,000 key differs
- 75IB: Shackle made from stainless steel
- Key retaining: 75IB/40 + 75IB/50
- Self locking: 75IB/30
- Long shackle available: HB40; HB50; HB63; HB80



SOLID BRASS PADLOCKS 65 SERIES



Advantages

- Body made from solid brass
- Shackle made from hardened steel with NANO-PROTECT™
- Shackles available in different length (HB) and material (brass & stainless steel)
- Inner components made from non-corrosive material
- Precision pin tumbler cylinder
- CS: Shackle protected for increased cutting and prying resistance

TITALIUM™, STRONG LIGHTWEIGHT, INNOVATIVE



Advantages

- Solid lock body made from TITALIUM special aluminium – high security with low weight
- hardened steel shackle with new sophisticated plating for extreme corrosion resistance
- 6-pin precision cylinder with paracentric keyway
- double bolted
- chrome-plated cylinder plugs
- large tulip-shaped keyhead
- Sizes: 40, 45, 50mm
- Long shackles available for 40mm version (HB40; HB63)



HIGH SECURITY CHAINS ABUS KS CHAINS



Advantages

- Made from hardened special alloy steel
- Provides top security against all types of aggressive attacks
- Special coating for maximum corrosion resistance
- Fabric sleeve prevents paint work and chrome from damage
- Convenient chain and Monobloc combination for maximum security
- Available in 6mm, 8mm, 10mm, 12mm and 14mm diameter



ABUS KEY GARAGE RESETTABLE, COMPACT & PUSH BUTTON



Advantages

- Large Solid metal housing offers more capacity than conventional key safes
- Locking cover made from zinc die-cast
- Holds up to 8 cards or 20 keys
- Vinyl coated shackle and back protects surfaces
- 767/777: Protective keyboard panel cover
- 767/777: Large hinged front door for maximum convenience
- 767/777: 10 push-button resettable combination: Set your own PIN
- 787/797/737: 4-digit individually resettable code
- 787/797: Protective cover with sliding mechanism
- 737: Compact and portable
- 737: Holds 6 keys

Applications

- Residential
- Hotel (staff)
- Store front



KEY GARAGE™

787 / 797



727 / 737 (compact)



Features

- Ideal protected storage for keys and other valuables
- Quick and easy access for frequently changing groups of people (craftsmen, service, holiday guests, apartment buildings, car rentals)
- Solid metal housing
- Locking cover made from zinc die-cast
- 4-digit individually resettable code
- Protective cover with sliding mechanism
- For wall mounting



GATESEC™ 131



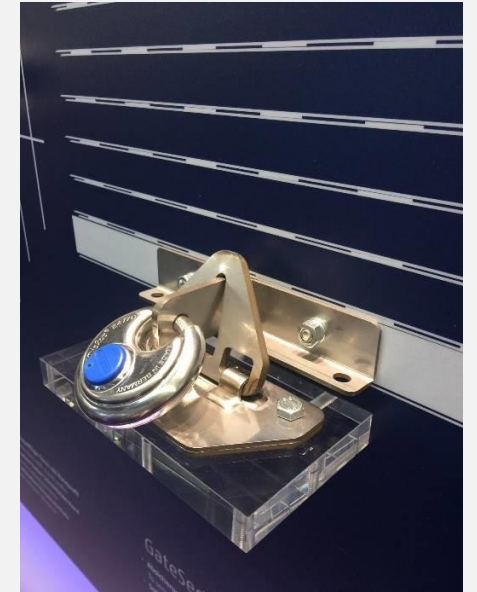
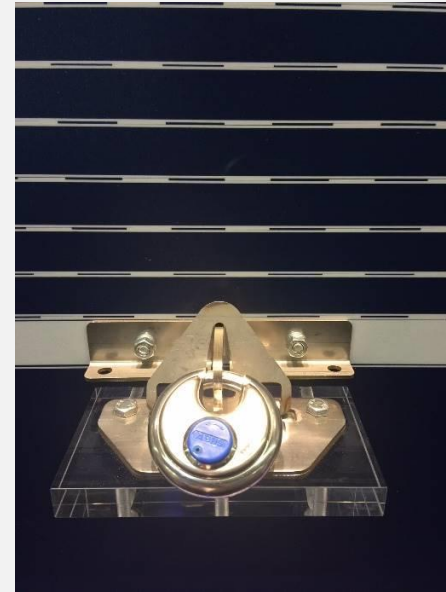
Features

- Solid, hardened steel with round edges for more cutting resistance
- Eterna coating for ultimate corrosion resistance
- Patent design
- To be used with Padlock
- Installation from both sides possible

GATESEC™ 138

Features

- Solid, stainless steel body
- 3 fixing points
- Greatly flat mounting
- Can be mounted on the wall to secure eg. Bikes etc.
- Pulling resistance beyond 2,2 ton
- Incl. Mounting Material



DISKUS® INTEGRAL DI141/200



Advantages

- Universal hasp with integrated Diskus padlock for doors and gates without rebate
- Ideal for use e.g. on double wing doors (transporters, box wagons)
- Easy to operate with one hand due to handy frontal cylinder access
- Solid steel housing protects and prevents physical attack on Diskus® padlock
- Convenient cylinder front access – drilling protected
- Protective key way cover
- Extremely corrosion resistant due to ETERNA™ plating
- Easy to operate without removing Diskus® padlock
- Patented design
- 70mm Diskus® padlock and mounting hardware included

Applications

- Van
- Barn doors
- Small transporter



ABUS DOOR SECURITY

Verrous



Electronical Doorviewer



Doorcloser



ABUS MORTICE LOCK RANGE + CYLINDER + 3 KEYS

New KITS of Mortice Locks, with cylinder, strike plate



◀ ESi85/45

- Steel galvanised
- 85mm distance
45mm backset
- 20mm forend,
stainless steel
- Standard doors
- Deadbolt
convertable into left
and right within
seconds,
- Incl. stainless steel
strike plate
- EN12209



◀ Di6N 35/35

- Set, includes a 6pin
brass cylinder,
reversible keyway
with dimple key
- 3 keys per cylinder,
square keyhead
with first deliveries



INDUSTRIAL SAFETY

