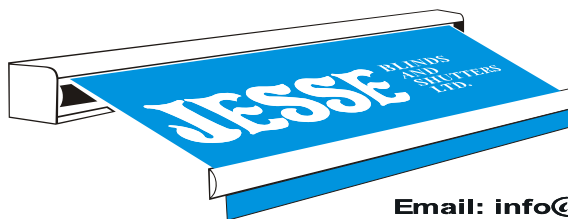


The Roller Garage Door System



64B STONEYFORD ROAD
LISBURN
CO. ANTRIM
BT28 3SR
Tel: 028 92648471
Fax: 028 92648472

Email: info@jesseblinds.co.uk

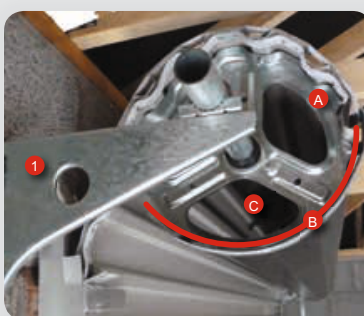
Castellated steel drum wheels are specially formed to support the shaped curtain of the door, giving the door added strength and reducing the headroom required.

The top of the door is curved using a bespoke machine to reduce stress on the door curtain where it is fixed to the drum wheel. A **steel separator** protects this curve and helps eliminate scuffing and rubbing as the door opens and closes.

Combination of drum and multiple precision spring system to ensure perfect balance every time.

Nylofelt™ nylon braided running strips for smooth, quiet, grease less operation.

Double wheels at each side of door eliminate shuddering, reduce sticking and provide smoother, more reliable operation. The wheel assembly houses the Nylofelt so that it is not wrapped around the bottom of the door. This feature is very important as it stops the Nylofelt being damaged through contact with the ground.



Remote Control Automation

Soft start, soft stop function slows down the door before the end of the cycle. At the start of the cycle, it will accelerate smoothly to normal speed. This reduces wear and tear on the motor and door. A 240volt 13amp supply is required with in 1.5 metres of the opening.



Two handsets and a wall button supplied as standard

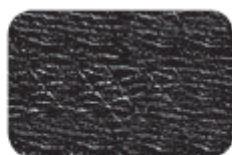


Colour Range

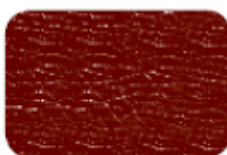
Plastisol Leathergrain (PVC Based Coating)*



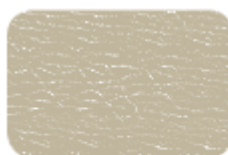
BS00E55
White



BS00E53
Black



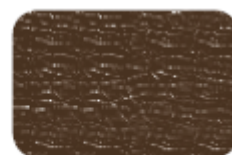
RAL3011
Burgundy



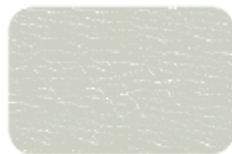
BS10B19
Mushroom



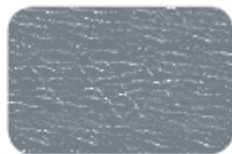
BS10C31
Honesty



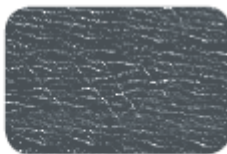
BS08B29
Van Dyke Brown



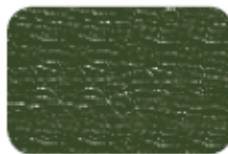
BS10A05
Goosewing Grey



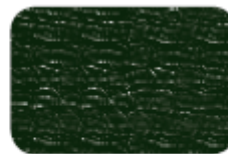
BS18B25
Merlin Grey



RAL7016
Anthracite



BS12B27
Olive Green



BS12B29
Juniper Green

Mahogany and Golden Oak



Mahogany Woodgrain



Golden Oak Woodgrain



For more information or to arrange a site visit, please telephone : 028 92 648 471