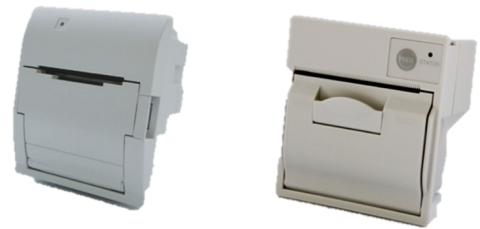




READ WRITE & TRANSMIT

SP1-21 & SP2-21

PANEL MOUNT PRINTER 58mm (2inches)



 **SANEI** SANEI ELECTRIC INC.

CHARACTERISTICS

Panel mount printers 58mm (2 inches), very compact and light

Printing speed :

SP1-21 : 100mm/sec

SP2-21 : 90mm/sec

Drop-in system (printing head opens) for easy paper loading

Maximum paper roll diameter : 50mm (SP1-21) and 40mm (SP2-21)

Colors available : Black and white

Model	SP1-21S	SP1-21P	SP2-21
Printing method	Direct line thermal		
Number of dots	384dots		
Resolution	8dots/mm		
Printing/ Paper width	48mm/58mm		
Printing speed	100mm/sec MAX		90mm/sec MAX
Characters/line	32characters/line		48characters/line
Service life	Pulse activation 100 million pulse or more. (Dot's ratio=12.5%) Abrasion resistance 50Km or more		
Interface	Serial (RS-232C) + USB	Parallel (Centronics)	Serial (RS-232C) + USB
Barcode	JAN (EAN)13/8 , CODE39 , ITF , CODABAR , CODE128 , UPC-A/E		
Power supply	Outer power source DC5V - 8.7V 3A DC socket DC8.7V 3.3A (AC adapter BLS-120W)		Outer power source DC4.75V - 9.0V 3A
Current consumption	standing by 100mA printing in average 1.7A Max.3A		standing by 75mA printing in average 1.5A
Environmental condition	Operating temperature : 0°C - +50°C Operating humidity : 30%RH - 80%RH (Non condensation) Storage temperature : -20°C - +60°C Storage humidity : 20%RH - 85%RH (Non condensation)		Operating temperature : -10°C - +50°C Operating humidity : 20%RH - 85%RH (Non condensation) Storage temperature : -25°C - +60°C Storage humidity : 10%RH - 90%RH (Non condensation)
Dimensions	101(W)x116(H)x61(D)mm	95(W)x110(H)x61(D)mm	80(W)x52(H)x84.5(D)mm
Weight	230g		130g