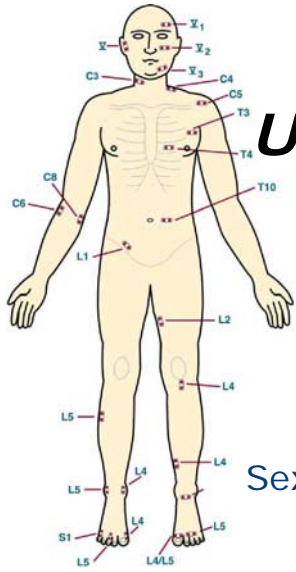


# Painless

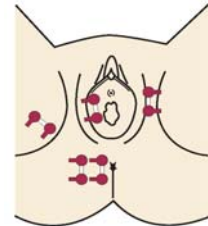
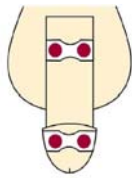
## Urethral, Bladder, Vaginal, Rectal Pelvic Sensory Evaluation ...



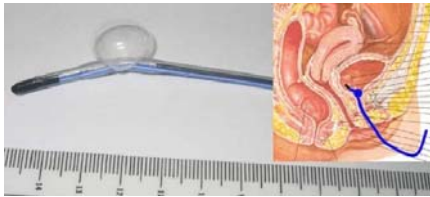
Trauma, Pelvic Pain, Painful Bladder Syndrome  
Diabetic Bladder Dysfunction, Urinary Incontinence  
Autonomic Sensory Function, Overactive Bladder  
Endometriosis, Reflex Incontinence, LUT Dysfunction  
Sexual Health, Pharmaceutical Effects, Rat Bladder Function

Experimental catheter electrodes are available for research.

Urethral & Bladder Catheter Electrode with Lumen (12 Fr)  
(positioning balloon inflated)



Bladdertrode™



Urotrode™ (cuff balloon)



Vaginal/Rectal G-Trode™



## Neurometer® Urogynecologic Advantages

- Selective small & large fiber evaluations
- Broadens spectrum of urodynamic exam
- High patient acceptance for repeated evaluations
- Simple in-office technician operated automated procedure
- Unique ability to detect sub-clinical neuropathy
- Only procedure that measures both hyperesthesia & hypoesthesia
- Technology validated - over 23 years of clinical and research use with more than 600 scientific publications worldwide



Rat Bladder Electrode



## Urologic & Gynecologic Neurometer® Related Papers

(Please visit [www.neurometer.com](http://www.neurometer.com) for a comprehensive bibliography)

1. Lee, W-C., Wu, H-P, Tai, T-Y, Yu, H-J, Chiang, P-H. Investigation of Urodynamic Characteristics and Bladder Sensory Function in the Early Stages of Diabetic Bladder Dysfunction in Women With Type 2 Diabetes. Journal of Urology, Vol. 181, 198-203, 2009.
2. Moore, C-K, McAchran, S, Daneshgari, F. Current Perception Thresholds of the Female Genitalia in Sexually Active Females. American Urological Association meeting, Poster 1384, 2008.
3. Pesce, F., Chronic Pelvic Pain Syndrome: a practical clinical approach (52). Pelvipiperineology Vol. 27 (2), 2008.
4. Gater, L Tolterodine Causes Measurable Restoration of Urethral Sensation in Women With Urge Urinary Incontinence. American Uroynecologic (AUGS), Society 29th Annual Scientific Meeting, Paper 56, 2008.
5. Abouassaly, R., Liu, G., Yamada, Y., Ukimura, O., Daneshgari, F. Efficacy of a Novel Device for Assessment of Autonomic Sensory Function in the Rat Bladder. Journal of Urology, Vol. 179(3):1167-1172, 2008.
6. Moore, C. Studying Female Sexual Dysfunction and the Impact of Overactive Bladder Female Sexual Health. Urology News, 2007-2008.
7. Kenton, K., Simmons, J, FitzGerald, M.P., Lowenstein L., Brubaker L. Urethral and Bladder Current Perception Thresholds: Normative Data in Women. The Journal of Urology. Vol. 178(1)189-192, 2007.
8. Yamada, Y, Daneshgari, F., Liu, G., Li, N. Spinal c-fos expression induced by neuroselective electrostimulation of bladder afferent pathways. Society for Neuroscience, 821.2/FF17, 2007.
9. Kenton, K., Lowenstein, L., Simmons, J, Brubaker, L. Aging and Overactive Bladder May Be Associated With Loss of Urethral Sensation in Women. Neurourology and Urodynamics, Vol. 26:981B984, 2007.
10. De Laet, K., De Wachter, S, Wyndaele, J. Current perception thresholds in the lower urinary tract: Sine- and square-wave currents studied in young healthy volunteers. Neurourology and Urodynamics, Vol. 24:261-266, 2005.
11. FitzGerald MP, Koch D, Senka J. Visceral and cutaneous sensory testing in patients with painful bladder syndrome. Neurourology and Urodynamics, Vol. 24(7):627-632, 2005.
12. Yokoyama, T., Nozaki, K., Fujita, O., Nose, H., Inoue, M., Kumon, H. Role of C afferent fibers and monitoring of intravesical resiniferatoxin therapy for patients with idiopathic detrusor overactivity. Journal of Urology, Vol. 172(2):596-600, 2004.
13. Ukimura, O., Ushijima, S., Honjo, H., Iwata, T., Suzuki, K., Mizutani, Y., Kawauchi, A., Miki, T. Neuroselective Current Perception Threshold Evaluation of Bladder Mucosal Sensory Function. European Urology, Vol. 45(1)70-76, 2004.
14. Honjo, H., Ukimura, O., Ushijima, S., Iwata, T., Suzuki, K., Hirahara, N., Kitakoji, H., Nakao, M., Miki, T. Acupuncture for Treatment of Patients with Overactive Bladder Refractory to Conventional Pharmacotherapy. Neurourology and Urodynamics, Vol. 23, Issue 5 6:510, 2004. <http://www.icsoffice.org/publications/2004/PDF/0510.PDF>
15. Hirahara, N., Ukimura, O., Honjo, H., Ushijima, S., Iwata, T., Suzuki, K., Matsubara, H., Miki, T. The quantitative bladder sensory test: Evaluation of the neuroselective current perception threshold of the bladder sensory to identify patients with overactive bladder associated with sensory dysfunction. Neurourology and Urodynamics, Vol. 23, Issue 5 6:503, 2004. <http://www.icsoffice.org/publications/2004/PDF/0503.PDF>
16. Healey, M, Rice G., Westerman R. Does Endometriosis Pain Alter Sensation Perception?, Australian Gynecologic Endoscopy Society (AGES) Free Communications. (A) 1130-1340, 2003.
17. Simmons, J., Kenton, K., FitzGerald, M. P., Brubaker, L. Current Perception Threshold (CPT) Measurements of the Urethra and Bladder in Asymptomatic Women. Journal of Pelvic Medicine and Surgery. Vol. 9(5):258, 2003.
18. Ushijima, S., Ukimura, O., Honjo, H., Miki, T. Observer Reproducibility in Quantitative Measurement of the Current Perception Threshold (CPT) on Bladder Sensory Function Using a Neurometer. International Continence Society, 476, 2003. <http://www.icsoffice.org/publications/2003/PDF/476.PDF>
19. Honjo, H., Ukimura, O., Ushijima, S., Suzuki, K., Inaba, M., Iwata, T., Kitakoji, H., Miki, T. Selection of Candidate for Acupuncture treatment of Urinary Incontinence Determined by Neurometer to Measure Current Perception Threshold in the Bladder. International Continence Society, 460, 2003.
20. Kenton, K., Fuller, E., Benson, J.T. Current perception threshold evaluation of the female urethra. Int Urogynecol J Pelvic Floor Dysfunct, Vol. 14(2)133-5, 2003.
21. Ushijima, S., Ukimura, O., Miki, T., Iwata, T., Inaba, M.; Honjo, H. The Neurometer as an instrument for appropriate selection and monitoring of intravesical resiniferatoxin therapy for patients with detrusor hyperreflexia. Neurourology and Urodynamics, Vol. 21(4):333-334, 2002.
22. Neal, G.W. Neuromodulation of Genital Sensory Thresholds in Normal Women. Annual meeting of the International Society for the Study of Women's Sexual Health, Vancouver, 2002.
23. Neal, G.W. Effects of Clitoral Application of Alprostadil and Dinoprostone on Quantitative Sensory Testing. Annual meeting of the International Society for the Study of Women's Sexual Health, Vancouver, 2002.
24. Ukimura, O., Iwata, T., Inaba, M., Honjo, H., Kawauchi, A., Kojima, M.; Miki, T. Quantitative measurement of urinary sensory function assessed by current perception threshold in the bladder using a Neurometer.® Neurourology and Urodynamics, Vol. 20 (Part 4):121, 2001.
25. Ukimura, O., Miki, T., Kawauchi, A., Iwata, T., Iwata, M., Honjo, H. Preliminary results of quantitative measurement of urinary sensory function assessed by current perception threshold in the bladder. Journal of Urology, Vol. 165(5 Suppl.):299, 2001.
26. Kenton, K., Fuller, E. M., Benson, J.T. Current Perception Threshold Evaluation of the Female Lower Urinary Tract, Muscle & Nerve, Vol. 23(10): 1628-1629, 2000.
27. Katims, J.J., Engel, R.M.E., Hendler, N., Scally, A., Widdifield, J.F., Widdifield, G.E. Electrodiagnostic Evaluation of Penile Pudendal Nerve Sensory Function. Clinical Neurophysiology, Vol. 110, Supplement 1:PS-2.15:S99, 1999.